

MATERIEL COMPLEMENTAIRE



1. HUILES SPÉCIFIQUES	556
2. PRODUITS D'ÉTANCHÉITÉ INDUSTRIELS	558
3. ENROULEURS	560
4. SOUFFLETTES PROFESSIONNELLES	561
5. BUSES DE SOUFFLAGE	562
6. BUSES D'ASPIRATION DE PARTICULES SOLIDES ALIMENTÉES EN AIR COMPRIMÉ	565
7. CONNECTEURS PNEUMATIQUES MULTIPLES	565
8. TUBES EN CUIVRE (DIN EN 1057/DVGW)	566
9. EMBASES ADHÉSIVES ET COLLIERS DE SERRAGE	566
10. GAINES DE PROTECTION SPIRALÉES	567
11. GAINES DE PROTECTION OUVRABLES POUR MONTAGE RAPIDE	567

1. HUILES SPÉCIFIQUES

1.1. Pour outils et systèmes industriels pneumatiques

Type OIL.01

Description :

- Huile spécifique pour outils et systèmes pneumatiques
- ISO 6743-11 Types PAC et PBC
- Densité à +15°C : 873 kg/m³
- Viscosité à +40°C : 32 mm²/s

Applications :

- Très bonne pulvérisation
- Excellentes caractéristiques anti-usure
- Grande adhésivité aux surfaces métalliques
- Bonne protection contre la corrosion
- Convient pour une large plage de températures



Référence	Contenance (l)
OIL.01.020	20
OIL.01.005	5
OIL.01.001	1

1.2. Pour compresseurs

1.2.1. A piston(s)

Type OIL.02 - Huile minérale pour compresseurs à piston(s)

Description :

- Huile minérale à grande résistance à l'oxydation avec une très faible tendance à la formation de carbone
- Viscosité : ISO VG 68



Référence	Contenance (l)
OIL.02.001	1

1.2.2. A vis

Type OIL.03 - Huile minérale de qualité supérieure BOGE 3000plus

Description :

- Longue durée de vie (économie de frais d'entretien)
- Faible tendance à la cokéfaction et résistance thermique élevée et résistance élevée à l'oxydation
 - Faible tendance à l'évaporation et faible consommation d'huile
 - Vous contribuez à réduire la formation de dépôts dans les compresseurs à vis
- Développés pour une pureté exceptionnelle des surfaces intérieures, notamment dans les séparateurs d'huiles
- Protection exceptionnelle contre l'usure
- Développés pour un fonctionnement efficace.



Rem. : Si l'huile utilisée dans le compresseur n'est pas de l'huile Type OIL.03 de la marque BOGE, il faut impérativement faire un "rinçage" de votre compresseur avant de remettre de l'huile Type OIL.03. Pour plus d'informations sur ce produit et pour connaître la procédure exacte à suivre, n'hésitez pas à prendre contact avec un de nos conseillers techniques.



Référence	Contenance (l)
OIL.03.020	20
OIL.03.005	5

Type OIL.04 - Huile synthétique BOGE SYPREM S

Description :

- Faibles frais d'entretien et d'exploitation grâce à de longs intervalles de changement d'huile allant jusqu'à 9000 heures de service dans des compresseurs à vis avec refroidissement à injection d'huile
- Vidange simplifiée des huiles minérales par un comportement d'étalement neutre des huiles
- Faible évaporation de l'huile grâce à une stabilité élevée à l'évaporation et donc, air comprimé propre et réseau d'air comprimé davantage exempt d'huile, suppression de frais de nettoyage inutiles et suppression d'arrêts imprévus des vannes pneumatiques par effet de gommage
- Faible formation de résidus d'oxydation dans le circuit d'huile et donc faibles frais d'exploitation grâce à la longue durabilité du filtre à huile et du séparateur d'huile



Référence	Contenance (l)
OIL.04.020	20
OIL.04.005	5

Type OIL.05 - Huile de rinçage BOGE Cleaning Fluid

Description :

- Fluide synthétique concentré de rinçage pour le nettoyage des espaces internes de blocs compresseurs à vis lubrifiés, lors du passage de l'huile minérale vers l'huile synthétique pour compresseurs à vis lubrifiés.



Référence	Contenance (l)
OIL.05.020	20
OIL.05.005	5

1.3. Pour outillage hydraulique haute pression

1.3.1. Pour crics

Type OIL.07 - Huile

Description :

- Huile hydraulique de haute qualité spécialement étudiée pour répondre aux exigences des principaux constructeurs d'équipements hydrauliques
- Viscosité : ISO VG 46



Référence	Contenance (l)
OIL.07.001	1

1.3.2. Pour pompes manuelles Hi-Force

Type OIL.06 - Huile minérale

Description :

- Huile hautement raffinée spécialement élaborée pour les pompes manuelles d'outillages hydrauliques, garantissant longévité même dans des conditions difficiles.
- Viscosité : ISO VG 32



Référence	Contenance (l)
OIL.06.025	25
OIL.06.005	5
OIL.06.001	1



2. PRODUITS D'ÉTANCHÉITÉ INDUSTRIELS

2.1. Rouleaux de PTFE

2.1.1. Pour hydrocarbure, gaz, eau, vapeur, huile, air, amoniac et oxygène gazeux

Type ACCA.016

Caractéristiques :

- Inerte aux agents chimiques
- Résiste à une traction de 10 Mpa
- Allongement 50%
- Plage de température : **-240°C à +260°C**
- Plage de pression : du vide jusqu'à 210 bar et 700 bar pour la pression hydraulique
- Plage du pH 1-14



Référence	Longueur de la bande	Largeur de la bande	Epaisseur de la bande	Densité (g/cm ³)
	(m)			
ACCA.016.01	12	12	0,075	0,35
ACCA.016.02	12	12	0,06	0,26
ACCA.016.03	50	19	0,1	0,54

2.1.2. Spécifiques pour la vapeur

Type ACCA.017

Caractéristiques :

- Inerte aux agents chimiques
- Plage de température : **-240°C à +260°C**
- **Ne pas utiliser sur oxygène liquide**



Référence	Longueur de la bande	Largeur de la bande	Epaisseur de la bande
	(m)		
ACCA.017.01	12	12	0,1

2.2. Loctite

Type LOCTITE 542 - 50 ml

Applications :

Produit d'étanchéité des raccords filetés métalliques fins, en particulier les tuyaux hydrauliques et pneumatiques

Caractéristiques :

- Recommandé sur les raccords filetés à pas fins utilisés dans les circuits hydrauliques et pneumatiques et les raccords de petit diamètre en général
- Approbation DVGW (EN 751-1) : NG-5146AR0855
- Dimension maximum du filetage : 3/4"
- Résistance au démontage : Moyenne
- Plage de température de service : **-50°C à +150°C**
- Couple de rupture : 15 Nm
- Autres conditionnements sur demande : 10 ml, 250 ml



Type LOCTITE 55 - 160 m

Applications :

Fibre d'étanchéité des raccords filetés et des tuyaux

Caractéristiques :

- Usage général, tuyauterie filetée et produit d'étanchéité pour raccord
- Joint sans polymérisation, étanchéité immédiate à pression maximale
- Pour une étanchéité rapide, facile et fiable
- Approbation WRC, conforme à la norme BS 6920 relative à l'eau potable : 0808533
- Approbation DVGW/KTW pour le gaz et l'eau potable
- Testé selon la norme EN 751-2 Classe ARp et DIN 30660
- Certification à la norme NSF / ANSI, Standard 61
- Dimension maximum du filetage : 4"
- Résistance au démontage : Faible
- Plage de température de service : **-55°C à +149°C**
- Couple de rupture : sans objet
- Autres conditionnements sur demande : 50 m



Type LOCTITE 577 - 50 ml

Applications :

Idéal pour circuits pneumatiques de freins, raccords hydrauliques sur maître-cylindre, servo-directions hydrauliques, boîtes de vitesse, carters moteur.

Caractéristiques :

- Produit d'étanchéité à usage général pour tous types de filetages métalliques grossiers
- Recommandé pour les applications à prise rapide, même à faible température, par exemple la maintenance sur site en extérieur
- Conforme à la norme NSF n° 123001
- Approbation DVGW (EN 751-1)
- Approbation WRC (BS 6920) : 0711506
- Dimension maximum du filetage : 3"
- Résistance au démontage : Moyenne
- Plage de température de service : **-50°C à +150°C**
- Couple de rupture : 11 Nm
- Autres conditionnements sur demande : 250 ml, 2 l



Type LOCTITE 243 - 50 ml

Applications :

"Frein filet" évite le desserrage des systèmes vissés

Caractéristiques :

- Adapté à tous les métaux, y compris les substrats passifs (par ex., acier inoxydable, aluminium, surfaces plaquées)
- Conçu pour tolérer une légère contamination par huiles industrielles (par ex. huiles moteur, solutions antirouille ou fluides de coupe)
- S'oppose au desserrage de pièces sous contraintes de vibrations telles que les vis de pompes, de carters de boîte de vitesses ou de presses
- Permet le démontage avec des outils manuels pour l'entretien
- Conforme à la norme NSF n° 123000
- Diamètre maximum de filetage : M36
- Résistance : Moyenne
- Couple de rupture boulon M10 : 26 Nm
- Plage de température de service : **-55°C à +180°C**
- Autres conditionnements sur demande : 10 ml, 250 ml



Type LOCTITE 5331 - 100 ml

Applications :

Produits d'étanchéité aux gaz et fluides, aqueux ou non, de pièces filetées telles que raccords et installations de tuyauteries, avec filetages droits ou coniques, jusqu'à 150°C.

Cette Loctite est recommandée pour les raccords filetés en plastique/métal ou en plastique/plastique.

Caractéristiques :

- Approbation DVGW (EN 751-1)
- Plage de température de service : **+150°C**



Type LOCTITE 7100 - 400 ml

(Mille bulles) - Aérosol

Applications :

Produit conditionné en aérosol, facile d'utilisation, permettant une détection rapide de fuites. Ce produit forme des bulles dans les zones où une fuite est présente. Peut être utilisé sur toute installation et système hydraulique ou véhiculant du gaz, air comprimé, hélium, azote, etc. sur tout type de tuyauteries métalliques ou plastiques.

Caractéristiques :

- Plage de température de service : **+10°C à +50°C**



Type LOCTITE 7235 - 600 ml

Aérosol

Applications :

Produit conditionné en aérosol, facile d'utilisation. Formule de solvant conçu pour éliminer saleté, huile, graisse, liquide de frein et dépôts de poussière des étriers de frein, tambours, disques, cylindres, tapis, garnitures, chaussures et composants environnants. Efficace contre les systèmes de freins et d'embrayage attaqués par l'amiante. Ce produit n'est pas recommandé pour le nettoyage de pièces en plastique ou en caoutchouc.



MATERIEL COMPLEMENTAIRE

3. ENROULEURS

3.1. Pneumatiques



Caractéristiques :

- Température de service : -20°C à +100°C pour le Type 8400 (8401 à 8427), -5°C à +40°C pour tous les autres modèles

Utilisations :

- Uniquement de l'air pour le Type AM86, air et eau pour tous les autres modèles



Référence	Ø int. Tuyau (ID)	Matière du tuyau	Longueur du tuyau	Matière du boîtier/support	Pression max.	Raccord d'entrée	Raccord de sortie	Tuyau d'entrée	Poids (Kg)	Support orientable	
	(mm)		(m)					(m x ID)			
AL81/8	8	Polyuréthane	9+1	Aluminium/acier	15 bar	Sans	G1/4"M	1,5x8	6	Inclus	
AL83/10	10		15+1					G3/8"M	1,5x10	9	Inclus
AM86/10	10	Polyuréthane	24+1	Plastique jaune/acier	15 bar	Sans	G3/8"M	1,5x10	10	Inclus	
AM86/13	12,5		15+1					G1/2"M		1,5x12,5	Inclus
804/8/S	8	Polyuréthane	9+1	Plastique gris/acier	15 bar	Sans	G1/4"M	1,5x8	4	Inclus	
805/8/S			15+1						7	Inclus	
805/10/S			10						G3/8"M	1,5x10	7
804/8	8	Polyuréthane	9+1	Plastique jaune/acier	15 bar	Sans	G1/4"M	1,5x8	4	Inclus	
805/8			15+1						7	Inclus	
805/10			10						G3/8"M	1,5x10	7
9100/6	5,5	Polyuréthane	5,5+1	Plastique noir/acier	12 bar	Push-in 6x8	G1/4"M	NON	2	Inclus	
8401	Sans tuyau	/	/	Flasque ABS/acier	20 bar	G1/2"F	G1/2"F	NON	/	8400/SW	
8404	10	SAE100R6 Intérieur en NBR recouvert de caoutchouc CR avec une fibre textile	12						11		
8406			18						15		
8408	12,5		10						9		
8410			15						14		
8424	10		KPU tuyau double couche avec une fibre textile						20		17
8426	12,5								15		14
8427									20		17

3.2. Electriques



Référence	Câble	Type de câble	Longueur du tuyau	Matière du boîtier/support	P max enroulé 230/50 (20°C)	P max déroulé 230/50 (20°C)	Protection thermique	Entrée/ sortie	Tension max	Fixation murale orientable	Poids
	(mm²)		(m)		(W)	(W)			(Volt)		(Kg)
9004/GS	3G1,5	H05W-F	5+1	Plastique noir/acier	1400	1900	oui	Prise et fiche	500	oui	2,5
5527/XF GS	3G1,5	H05W-F	10+1,5	Plastique noir/acier	1200	1800	oui	Prise et fiche	500	oui	3,5
5827/XF GS				Plastique jaune/acier							
4315/S GS	3G1,5	H05W-F	14+1	Plastique gris/acier	1200	1800	oui	Prise et fiche	500	oui	5
4315/GS				Plastique jaune/acier							

4. SOUFFLETTES PROFESSIONNELLES

4.1. Classiques

Type ACCA.001



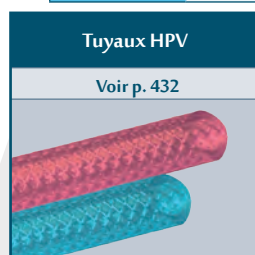
Référence	Description	Ø Orifice de sortie	Ø Racc.	Filet d'embout	Matière	Pression max.	Température
ACCA.001.01	Soufflette classique tout ou rien	1,5 mm	G1/4" F	M12 x 1,25 (F)	Aluminium	10 bar	-5°C à +50°C
ACCA.001.02	Soufflette classique proportionnelle						

4.2. Accessoires de soufflettes

Type ACCB.001



Référence	Description	Ø Orifice de sortie	Ø Racc.	Filet d'embout	Matière	Pression max.	Température										
ACCB.001.01	Buse standard (jet cône fin)	1,5 mm	/	M12 x 1,25 (M)	Acier	10 bar	-5°C à +50°C										
ACCB.001.02	Buse standard (jet cône fin)				Plastique												
ACCB.001.03	Buse avec réglage de débit				Plastique												
ACCB.001.04	Buse standard avec jet d'air de protection	/			Aluminium			-5°C à +200°C									
ACCB.001.05	Buse longue coudée 100 mm (Ø tuyau = 5 mm)	2 mm			/			M12 x 1,25 (M)	Laiton Nickelé	10 bar	-5°C à +150°C						
ACCB.001.06	Buse longue coudée 150 mm (Ø tuyau = 5 mm)																
ACCB.001.07	Buse longue coudée 250 mm (Ø tuyau = 5 mm)																
ACCB.001.08	Buse longue droite 100 mm (Ø tuyau = 5 mm)																
ACCB.001.09	Buse longue droite 150 mm (Ø tuyau = 5 mm)																
ACCB.001.10	Buse longue droite 250 mm (Ø tuyau = 5 mm)																
ACCB.001.11	Buse longue droite 400 mm (Ø tuyau = 5 mm)	/							M12 x 1,25 (M)			Plastique	-5°C à +50°C				
ACCB.001.12	Parabole de protection Ø int. = 12,5 mm Ø ext. = 70 mm																
ACCB.001.13	Buse silencieuse à jet cylindrique 63 à 73 dBA													/	M12 x 1,25 (M)	Aluminium + laiton	-5°C à +150°C
ACCB.001.14	Buse à économie d'air comprimé															Plastique	-5°C à +50°C
ACCB.001.15	Buse à économie d'air comprimé															Aluminium	-5°C à +200°C
ACCB.001.16	Adaptateur laiton G3/8"F-M12x1,25 M	Laiton			-5°C à +150°C												
2104003	Réduction		G1/4"F	G 3/8"M	Laiton	40 bar											



MATERIEL COMPLEMENTAIRE

Type ACCA.004



Référence	Description	Ø Orifice de sortie	Ø Racc.	Filet d'embout	Matière	Pression max.	Température
ACCA.004.01	Soufflette STAUBLI noire, à jet concentré	1,5 mm	G1/4" F	M12 x 1,25 M	Plastique	10 bar	-5°C à +70°C
ACCA.004.02	Soufflette bleue à débit réglable muni d'une buse longue	2 mm		/			
ACCA.004.03	Soufflette courte			G1/4" F	Aluminium		
ACCA.004.04	Gonfleur avec manomètre et flexible	Racc. pneumatique	G1/4"				

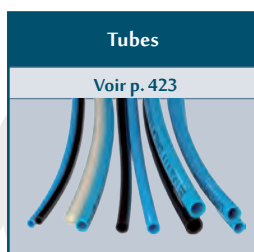
5. BUSES DE SOUFFLAGE

5.1. A jet plat

Type ACCA.002



Référence	Description	Largeur (mm)	Orifice de raccordement	Débit à 4 bar (l/min)	Matière	Pression max.	Température
ACCA.002.01	Buse plate de soufflage	47	G1/4" M	416	POM	6 bar	-5°C à +50°C
ACCA.002.02	Buse plate de soufflage	25		180			
ACCA.002.03	Buse plate de soufflage	25	M12x1,25 M				
ACCA.002.04	Buse plate de soufflage (approuvé FDA)	47	G1/4" M	416	PP		
ACCA.002.05	Buse plate de soufflage	51		Aluminium	-5°C à +200°C		
ACCA.002.06	Buse plate de soufflage	70		Inox 1.4408	-5°C à +550°C		
ACCA.002.07	Buse plate de soufflage	47		416	ABS	-5°C à +60°C	



5.2. A jet cylindrique

Type ACCA.003



Référence	Description	Ø ext. (mm)	Orifice de raccordement	Débit à 4 bar (l/min)	Matière	Pression max.	Température max
ACCA.003.01	Buse cylindrique à multi-perçage (jet conique diffus)	19	G1/4" M	466	ABS	6 bar	+50°C
ACCA.003.02	Buse cylindrique à multi-perçage (jet conique diffus)		M12x1,25 (M)				+50°C
ACCA.003.03	Buse cylindrique à multi-perçage (jet conique diffus)		G1/4" M		Zinc		+90°C
ACCA.003.04	Buse cylindrique à multi-perçage (jet conique diffus)		M12x1,25 (M)				+90°C
ACCA.005.01	Buse de soufflage haute performance, effet Laval	20	G1/4" M	255		10 bar	+70°C

5.3. Accessoires de buses de soufflage

5.3.1. Réducteurs de pression automatique

Type ACCB.002



Référence	Description	Orifice de sortie	Orifice de raccordement	Pression de sortie en fonction de la pression max d'entrée*			Matière	Température
				5 bar	10 bar	15 bar		
ACCB.002.01	Réducteur de pression automatique, 2,5 bar en sortie	G1/4" F	G1/4" M	1,5 bar	2 bar	2,5 bar	Laiton	0°C à +120°C
ACCB.002.02	Réducteur de pression automatique, 3,5 bar en sortie			2,2 bar	2,9 bar	3,5 bar		
ACCB.002.03	Réducteur de pression automatique, 4,5 bar en sortie			2,8 bar	3,7 bar	4,5 bar		
ACCB.002.04	Réducteur de pression automatique, 5,4 bar en sortie			3,5 bar	4,6 bar	5,4 bar		
ACCB.002.05	Réducteur de pression automatique, 6 bar en sortie			3,8 bar	5 bar	6 bar		

*Exemple 1 : Pour le réducteur ACCB.002.01, si la pression max d'entrée vaut 5 bar, la pression de sortie sera de 1,5 bar.

Exemple 2 : Pour le réducteur ACCB.002.03, si la pression max d'entrée vaut 10 bar, la pression de sortie sera de 3,7 bar.

5.3.2. Embases magnétiques

Type ACCB.004



Référence	Description	Orifice de raccordement	Orifice de raccordement	Pression max.	Matière	Température max.
ACCB.004.01	Embase magnétique simple (Ø85x98mm), équipée du té et de la vanne en laiton	Racc. Cannelé Ø9	G3/8"	10 bar	Acier	+70°C
ACCB.004.02	Embase magnétique simple (Ø85x130mm), équipée du té en laiton, manifold en aluminium et des deux vannes laiton					

MATERIEL COMPLEMENTAIRE

5.3.3. Tubes semi-rigides

Type ACCB.005



Référence	Description	Orifices de raccordement	Pression max.	Longueur totale (mm)	Matière		Température
					Tube	Raccords	
ACCB.005.01	Tube semi-rigide pour buse de soufflage	G1/4" M	10 bar	164	Caoutchouc	Acier	+70°C
ACCB.005.02				264			
ACCB.005.03				364			
ACCB.005.04				464			
ACCB.005.05				564			
ACCB.005.06				764			

MECA

6. BUSES D'ASPIRATION DE PARTICULES SOLIDES ALIMENTÉES EN AIR COMPRIMÉ

Type ACCA. 015

LAITON

ALU

INOX

Caractéristiques :

- Température de service du fluide : **-20°C à +120°C**
- PN : optimisé pour pression d'entrée de 5 bar (air comprimé filtré et non huilé)

Exemples d'application :

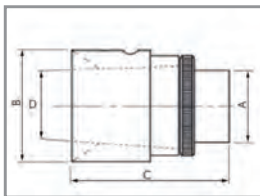
- Transport de tous les matériaux pouvant être transportés par un déplacement d'air rapide, par ex. copeaux, sciure, fumée, papier, bandes de tissu, granulés, poussière, capsules, poudre, etc.
- Ventilation et aspiration de fumée et de vapeurs sans ventilateur (protection Ex)
- Élimination de copeaux, de rognures, d'eau, de poussière, etc.
- Refroidissement de pièces moulées et de moules
- Nettoyage et refroidissement d'extrusions se déplaçant à travers l'amplificateur d'air

Avantages :

- Faible consommation d'air, d'où une économie d'énergie
- Diminution significative du bruit
- Pilotage en toute simplicité du débit et de la pression
- Comportement de marche/arrêt instantané
- Pas d'électricité, donc aucun risque d'explosion
- Sans entretien
- Aucun composant mobile, donc pas d'usure
- Faible niveau sonore

Fonction : L'air s'échappe à une vitesse proche du son grâce à une mince fente annulaire réglable. Ce faisant, l'air ambiant provenant de l'arrière de l'amplificateur est entraîné de manière à créer un jet d'air amplifié au niveau de la face avant. Les amplificateurs d'air peuvent être montés dans un système de tubes ou utilisés sous la forme d'un système ouvert et fonctionnent comme un système de vide, un ventilateur ou un souffleur pour le soufflage ou l'aspiration de poussière, gaz d'échappement, granulés ou matériaux fibreux. En cas de montage dans un système de tubes, les amplificateurs d'air avec le réglage d'usine présentent un coefficient d'amplification de 12 à 25 : 1 (en tant que système ouvert : 36 à 75 : 1, buse haute pression 4 : 1).

Applications : Les surpresseurs d'air variables sont utilisés là où il est nécessaire de purger de grandes quantités d'air à basse pression avec une consommation d'air comprimé minimale. Grâce à la buse facilement réglable, ils peuvent être adaptés à tout type d'application.



Référence	Matière	Ø Racc.	Consommation d'air à 5,4 bar (m³/min)	Volume d'air aspiré (m³/min)	A B C D			
					(mm)			
ACCA.015.01	Laiton	G 1/8" M	0,70	2,8	13	25	55	9
ACCA.015.02	Aluminium	G 1/4" F	0,42	5	32	50	73	20
ACCA.015.03	Aluminium	G 3/8" F	0,70	14	51	76	83	40
ACCA.015.04	Aluminium	G 1/2" F	0,84	21	100	127	128	76
ACCA.015.05	Inox 304 S	G 1/4" F	0,42	5	32	50	73	20
ACCA.015.06	Inox 304 S	G 3/8" F	0,70	14	51	76	83	40

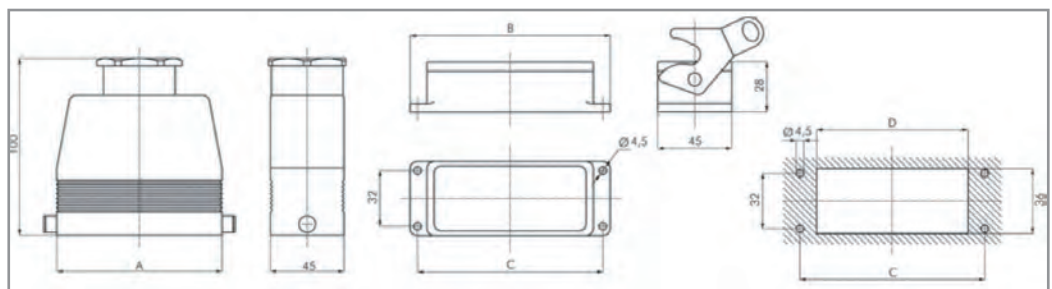
7. CONNECTEURS PNEUMATIQUES MULTIPLES

Type ACCA.005 - Type ACCA.006 - Type ACCA.007 - Type ACCA.008 - Type ACCA.018 Type ACCA.019 - Type ACCB.006

ALU

Caractéristiques :

- Corps en aluminium
- Joint en NBR
- Connecteurs Push-In en Laiton



Ensemble complet	Référence		Pression de service	Température	A B C D				Ø ext.	Nombre de connecteurs	Kit de joints
	Fiche	Prise			(mm)						
ACCA.018.01	ACCA.005.01	ACCA.007.01	Du vide à 15 bar	-20°C à +70°C	93	113	103	86	4	12	ACCB.006.01
ACCA.018.02	ACCA.005.02	ACCA.007.02			120	140	130	113			
ACCA.018.03	ACCA.005.03	ACCA.007.03			93	113	103	86	6	10	ACCB.006.02
ACCA.018.04	ACCA.005.04	ACCA.007.04			120	140	130	113			
ACCA.018.05	ACCA.005.05	ACCA.007.05			93	113	103	86	8	8	ACCB.006.03
ACCA.018.06	ACCA.005.06	ACCA.007.06			120	140	130	113			
ACCA.019.01	ACCA.006.01	ACCA.008.01	Du vide à 7 bar		73	94	83	66	6	6	ACCB.006.04
ACCA.019.02	ACCA.006.02	ACCA.008.02			73	94	83	66	8	4	ACCB.006.05

Rem. : l'ensemble complet comprend une fiche, une prise et un couvercle de protection

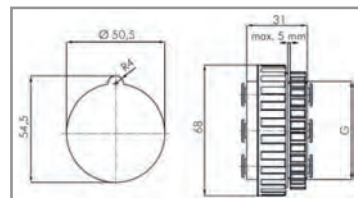
MATERIEL COMPLEMENTAIRE

ALU

Type ACCA.009 - Type ACCA.010 - Type ACCB.007

Caractéristiques :

- Boîtier en aluminium
- Connecteurs et contre-écrou en POM
- Joints en NBR



Référence		Pression (bar)		Température	G (fil de cloison)	Ø ext. (mm)	Nombre de connecteurs	Kit de joint
Connecteur	Prise	Min.	Max.					
ACCA.009.01	ACCA.010.01	-0,99	12	-20°C à +70°C	M50 x 1,5	4	12	ACCB.007.01
ACCA.009.02	ACCA.010.02					6	10	ACCB.007.02
ACCA.009.03	ACCA.010.03					8	8	ACCB.007.03

8. TUBES EN CUIVRE (DIN EN 1057/DVGW)

Type TCO - Tube recuit - Cintrage aisé



Référence	Ø Ext. (mm)	Ø int. (mm)	Longueur (m)	Pression de service max (**)
TCO.050.OR.004002*	4	2	50	382 bar
TCO.050.OR.006004	6	4		229 bar
TCO.050.OR.008006	8	6		163 bar
TCO.050.OR.010008	10	8		127 bar
TCO.050.OR.012010	12	10		104 bar
TCO.050.OR.015013	15	13	25	82 bar
TCO.025.OR.018016	18	16		67 bar
TCO.025.OR.022020	22	20		54 bar

Remarques :

* Qualité industrielle EN 12449 (R 200)

** La pression de service maximale admissible a été calculée sur base d'un tube souple de cuivre (R 200) et d'un coefficient de sécurité de 3,5 à une température de fonctionnement de 100°C

La pression de service admissible se rapporte au tuyau de cuivre non pas sur les parties de liaison! Les valeurs pour les tubes durs sont plus élevées.

9. EMBASES ADHÉSIVES ET COLLIERS DE SERRAGE POUR CÂBLES ET TUBES

Type ACCA.012.01 - Type TAX.007 - Type TAX.008

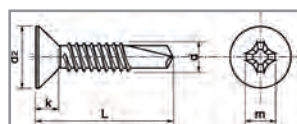
Caractéristiques pour ACCA.012.01 :

- Embase adhésive avec trou Ø 4,5 mm pour vis
- Largeur 25 mm, longueur 30 mm
- Blanche

Pour colliers largeur maxi 4,8 mm

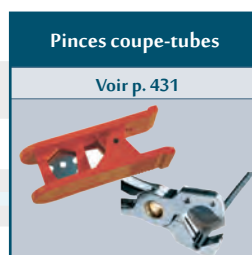
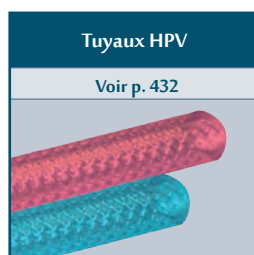


Option : Vis autoperceuse pour tôle DIN 7504-O, Inox A2, empreinte PH



Référence	Ø (mm)	Longueur (mm)
TAX.007.16	4,2	16
TAX.007.19		19
TAX.007.25		25

Largeur x Longueur (mm)	Colliers de serrage en Polyamide (100 unités)	
	Noir	Blanc
2,5x100	TAX.008.BK.25100	TAX.008.WH.25100
2,5x120	TAX.008.BK.25120	TAX.008.WH.25120
2,5x200	TAX.008.BK.25200	TAX.008.WH.25200
3,6x150	TAX.008.BK.36150	TAX.008.WH.36150
3,6x200	TAX.008.BK.36200	TAX.008.WH.36200
4,8x200	TAX.008.BK.48200	TAX.008.WH.48200
4,8x300	TAX.008.BK.48300	TAX.008.WH.48300



10. GAINES DE PROTECTION SPIRALÉES

Type ACCA.013

Caractéristiques :

- PEHD
- Extrudé en spirale
- Bords arrondis
- Température de service : -50°C à +100°C

Application : Mise en faisceau de tuyaux ou protection anti-frottement pour tubes et tuyaux dans des situations d'installation difficiles.



SYNTHÉTIQUE

Référence	Ø ext.	Ø int.	Diamètre faisceau (mm)	Largeur Rouleau (mm)	Longueur Rouleau (m)
	(mm)				
ACCA.013.01	12	9,6	9 - 13	10,5	25
ACCA.013.02	16	13,4	13 - 18	12,0	
ACCA.013.03	20	16	16 - 22	20,0	
ACCA.013.04	25	20,6	20 - 27	22,0	
ACCA.013.05	32	27	27 - 36		
ACCA.013.06	40	34,6	34 - 44	24,0	
ACCA.013.07	50	43,2	43 - 55	30,0	
ACCA.013.08	63	55,6	55 - 67	37,0	

11. GAINES DE PROTECTION OUVRABLES POUR MONTAGE RAPIDE

Type ACCA.014

Caractéristiques :

- Polypropylène sans halogène
- Gaine noire
- Température de service : -30°C à +110°C (brièvement +140°C)

Applications : Mise en faisceau rapide et économique de tuyaux et de câbles grâce à l'utilisation d'un nouvel outil de montage.

Rem. : outil d'installation livré avec la gaine

Référence	Plage de serrage max (mm)	Longueur (m)
ACCA.014.01	8	100
ACCA.014.02	15	50
ACCA.014.03	20	30
ACCA.014.04	25	20
ACCA.014.05	32	15

SYNTHÉTIQUE



MECA

INDEX

3

223000301.....	355	2303001.....	448	238913-104.....	279	2L11004.....	447
223000401.....	355	2303002.....	448	238913-106.....	231	2L11005.....	439
223000501.....	355	2303003.....	448	238913-106.....	233	2L11005.....	447
223000601.....	355	2303004.....	448	238913-106.....	278	2L11301.....	439
223000701.....	355	2304001.....	448	238913-106.....	279	2L11302.....	439
223000801.....	355	2304002.....	448	238913-117.....	278	2L11303.....	439
223000901.....	355	2304003.....	448	238913-117.....	279	2L11304.....	439
223001001.....	355	2304004.....	448	238913-132.....	278	2L11305.....	439
224000201.....	355	2305001.....	448	238913-132.....	279	2L11306.....	439
224000301.....	355	2305002.....	448	238913-206.....	261	2L11307.....	439
224000401.....	355	2305003.....	448	238913-206.....	278	2L11308.....	439
224000501.....	355	2305004.....	448	238913-217.....	278	2L21001.....	441
224000601.....	355	2305005.....	448	261900067.....	339	2L21003.....	441
224000701.....	355	2305006.....	448	261900068.....	339	2L21004.....	441
224000801.....	355	2305007.....	448	261900069.....	340	2L22001.....	441
224000901.....	355	2305008.....	448	26290352.....	339	2L22002.....	441
224001001.....	355	2305009.....	448	26290353.....	339	2L22003.....	441
226-749.....	327	2305010.....	448	26290354.....	340	2L22004.....	441
226004000.....	354	2305016.....	448	263900002.....	338	2L22005.....	441
226004001.....	354	2305017.....	448	264900026.....	338	2L22006.....	441
226004150.....	354	2306001.....	449	266900001.....	339	2L23005.....	441
226004200.....	354	2306002.....	449	266900003.....	340	2L23006.....	441
226004201.....	354	2306003.....	449	267900001.....	339	2L23301.....	441
226004300.....	354	2306004.....	449	267900002.....	340	2L23303.....	441
226004500.....	354	2306006.....	449	267900013.....	340	2L23306.....	441
226004600.....	354	2309001.....	449	26890284.....	339	2L23309.....	441
226004700.....	354	2309002.....	449	26890287.....	340	2L31001.....	439
226004701.....	354	2309003.....	449	26890297.....	340	2L31002.....	439
226004701.....	355	2309004.....	449	26890298.....	339	2L31003.....	439
226005000.....	354	2309007.....	449	28490001.....	337	2L31007.....	439
226005001.....	354	2351001.....	448	28490002.....	337	2L31008.....	439
226005150.....	354	2351002.....	448	28490004.....	337	2L31008.....	447
226005200.....	354	2351003.....	448	28490005.....	337	2L31009.....	439
226005201.....	354	2351004.....	448	28590213.....	337	2L31010.....	439
226005300.....	354	2351005.....	448	28590214.....	337	2L31011.....	439
226005500.....	354	2351006.....	448	28590215.....	337	2L31011.....	447
226005600.....	354	2351007.....	448	28590216.....	337	2L31012.....	439
226005700.....	354	2351008.....	448	286900023.....	337	2L31013.....	439
226005701.....	354	2351009.....	448	286900026.....	337	2L31014.....	439
226005701.....	355	2351010.....	448	2L01000.....	438	2L31014.....	447
226006600.....	354	2351011.....	448	2L01001.....	438	2L32001.....	440
226107000.....	363	2351012.....	448	2L01002.....	438	2L32002.....	440
226107010.....	363	2352001.....	448	2L01003.....	438	2L32003.....	440
226107102.....	363	2352002.....	448	2L01007.....	438	2L32004.....	440
226107201.....	363	237-568.....	327	2L01007.....	447	2L32008.....	440
226180001.....	363	237-569.....	327	2L01008.....	438	2L32009.....	440
226180002.....	363	237-570.....	327	2L01009.....	438	2L32010.....	440
226180003.....	363	2380101R.....	248	2L01010.....	438	2L32011.....	440
226180004.....	363	238213-006.....	278	2L01010.....	447	2L32012.....	440
226180101.....	363	238213-016.....	278	2L01011.....	438	2L32013.....	440
226180102.....	363	238213-033.....	278	2L01012.....	438	2L32014.....	440
226180201.....	363	238213-059.....	267	2L01013.....	438	2L34001.....	441
226180202.....	363	238213-059.....	278	2L01013.....	447	2L34002.....	441
226180399.....	363	238213-106.....	278	2L01018.....	438	2L34003.....	441
226180400.....	363	238213-116.....	278	2L02001.....	438	2L34006.....	441
226180401.....	363	238213-133.....	278	2L02002.....	438	2L34007.....	441
226900100.....	363	238213-157.....	231	2L02005.....	438	2L34008.....	441
226900250.....	363	238213-157.....	260	2L02006.....	438	2L34009.....	441
226900500.....	363	238213-157.....	278	2L02007.....	438	2L34010.....	441
226910100.....	363	238513-004.....	278	2L02008.....	438	2L34011.....	441
226910250.....	363	238513-006.....	278	2L02009.....	438	2L34013.....	441
226910500.....	363	238513-017.....	278	2L02010.....	438	2L34014.....	441
226920100.....	363	238513-106.....	231	2L02011.....	438	2L34016.....	441
226920250.....	363	238513-106.....	259	2L02012.....	438	2L34017.....	441
226920500.....	363	238513-106.....	278	2L03001.....	439	2L34F01.....	442
226930100.....	363	238513-117.....	278	2L03003.....	439	2L34F05.....	442
226930250.....	363	238613-006.....	278	2L03004.....	439	2L34F06.....	442
226930500.....	363	238613-006.....	279	2L03005.....	439	2L34F07.....	442
227300200.....	363	238613-016.....	278	2L03301.....	439	2L34F08.....	442
227300201.....	363	238613-016.....	279	2L03302.....	439	2L34F09.....	442
227300300.....	363	238613-033.....	278	2L03303.....	439	2L34F10.....	442
227300301.....	363	238613-033.....	279	2L03304.....	439	2L34F13.....	442
227300302.....	363	238613-059.....	231	2L03305.....	439	2L34F14.....	442
227300303.....	363	238613-059.....	233	2L03306.....	439	2L34F16.....	442
227300500.....	363	238613-059.....	260	2L03307.....	439	2L34F17.....	442
227300600.....	358	238613-059.....	261	2L03308.....	439	2L35001.....	442
227300600.....	363	238613-059.....	269	2L04001.....	438	2L35002.....	442
227300800.....	363	238613-059.....	272	2L04003.....	438	2L35003.....	442
227606813.....	352	238613-059.....	278	2L04004.....	438	2L35006.....	442
227606815.....	352	238613-059.....	279	2L04005.....	438	2L35007.....	442
227606823.....	352	238613-106.....	278	2L05001.....	439	2L35008.....	442
227606825.....	352	238613-116.....	278	2L05003.....	439	2L35009.....	442
227606833.....	352	238613-133.....	278	2L05003.....	447	2L35010.....	442
227606835.....	352	238613-159.....	231	2L05004.....	439	2L35011.....	442
227606913.....	352	238613-159.....	278	2L05004.....	447	2L35013.....	442
227606915.....	352	238713-006.....	269	2L05005.....	439	2L35014.....	442
227700000.....	358	238713-006.....	272	2L05005.....	447	2L35016.....	442
2301001.....	448	238713-006.....	279	2L07004.....	440	2L35017.....	442
2301002.....	448	238713-017.....	279	2L08002.....	439	2L40001.....	440
2301003.....	448	238813-006.....	278	2L08002.....	447	2L40003.....	440
2301004.....	448	238813-016.....	278	2L08004.....	439	2L40004.....	440
2301005.....	448	238813-033.....	278	2L08006.....	439		
2301006.....	448	238813-059.....	262	2L08006.....	447		
2301007.....	448	238813-059.....	278	2L08007.....	439		
2301008.....	448	238813-106.....	279	2L08008.....	439		
2301009.....	448	238813-116.....	279	2L08008.....	447		
2301010.....	448	238813-133.....	279	2L10001.....	442		
2301015.....	448	238813-157.....	233	2L10003.....	442		
2301017.....	448	238813-157.....	279	2L10003.....	447		
2302001.....	448	238813-206.....	262	2L10004.....	442		
2302002.....	448	238913-004.....	278	2L10004.....	447		
2302003.....	448	238913-006.....	231	2L10005.....	442		
2302004.....	448	238913-006.....	233	2L10006.....	442		
2302005.....	448	238913-006.....	259	2L11001.....	358		
2302006.....	448	238913-006.....	278	2L11001.....	439		
2302007.....	448	238913-017.....	278	2L11003.....	439		
2302008.....	448	238913-032.....	278	2L11003.....	447		
2302012.....	448	238913-104.....	278	2L11004.....	439		

INDEX

4

400127-081	321
400127-081	336
400127-081	341
400127-085	341
400127-097	321
400127-097	336
400127-097	341
400127-098	321
400127-098	336
400127-098	341
400127-141	278
400127-141	279
400127-142	230
400127-142	240
400127-142	242
400127-142	271
400127-142	278
400127-142	279
400127-144	278
400127-144	279
400127-144	278
400127-148	278
400127-148	279
400127-181	278
400127-181	279
400127-185	278
400127-185	279
400127-197	230
400127-197	240
400127-197	242
400127-197	250
400127-197	268
400127-197	271
400127-197	278
400127-197	279
400127-198	278
400127-198	279
400127-201	288
400127-205	288
400127-217	284
400127-217	288
400127-218	288
400127-641	288
400127-642	284
400127-642	288
400127-648	288
400137-642	288
400137-681	288
400137-685	288
400137-697	288
400137-698	288
400325-101	278
400325-101	279
400325-101	288
400325-105	278
400325-105	279
400325-105	288
400325-117	236
400325-117	260
400325-117	275
400325-117	276
400325-117	278
400325-117	279
400325-117	288
400325-117	286
400325-118	278
400325-118	279
400325-118	288
400325-141	279
400325-142	275
400325-142	276
400325-142	279
400325-144	279
400325-148	279
400325-201	278
400325-201	279
400325-205	278
400325-205	279
400325-217	236
400325-217	260
400325-217	278
400325-217	279
400325-218	278
400325-218	279
400325-241	278
400325-241	279
400325-242	236
400325-242	259
400325-242	265
400325-242	279
400325-242	278
400325-244	278
400325-244	279
400325-248	278
400325-248	279
400325-248	288
400325-642	286
400325-642	288
4003701	512
400405-201	288
400405-205	288
400405-217	288
400405-218	288

400405-642	288
400405-644	288
400425-101	321
400425-101	336
400425-101	278
400425-101	288
400425-105	278
400425-105	288
400425-117	238
400425-117	247
400425-117	253
400425-117	263
400425-117	267
400425-117	278
400425-117	288
400425-117	321
400425-117	336
400425-117	286
400425-118	278
400425-118	288
400425-118	321
400425-118	336
400425-141	278
400425-141	279
400425-142	238
400425-142	239
400425-142	246
400425-142	263
400425-142	264
400425-142	274
400425-142	279
400425-142	321
400425-142	336
400425-142	278
400425-144	278
400425-144	279
400425-148	278
400425-148	279
400425-201	264
400425-201	278
400425-201	279
400425-205	278
400425-205	279
400425-217	239
400425-217	263
400425-217	264
400425-217	265
400425-217	275
400425-217	276
400425-217	278
400425-217	279
400425-218	278
400425-218	279
400425-341	278
400425-341	288
400425-342	263
400425-342	264
400425-342	278
400425-342	288
400425-342	286
400425-344	278
400425-348	278
400426-101	278
400426-105	278
400426-117	262
400426-117	278
400426-118	278
400525-101	278
400525-101	278
400525-105	278
400525-117	238
400525-117	239
400525-117	260
400525-117	267
400525-117	278
400525-118	278
400525-201	278
400525-205	278
400525-217	247
400525-217	278
400525-218	278
400625-142	275
400625-142	276
400625-142	279
400625-144	279
400625-241	278
400625-242	238
400625-242	239
400625-242	259
400625-242	278
400625-244	278
400625-248	278
400727-117	240
400727-117	268
400727-117	278
400727-117	279
400727-117	321
400727-117	336
400727-118	278
400727-118	279
400727-118	321
400727-118	336
400727-181	278
400727-181	279
400727-181	321
400727-181	336
400727-185	240

400727-185	250
400727-185	278
400727-185	279
400727-185	321
400727-185	336
400902-101	278
400902-105	278
400902-117	253
400902-117	278
400902-118	278
400903-101	278
400903-105	278
400903-117	253
400903-117	278
400903-118	278
400904-541	341
400904-542	321
400904-542	336
400904-542	341
400904-544	341
400923-642	274
400923-642	279
400923-648	279
400924-697	274
400924-697	279
4010105	512
4010711	515
4010712	515
4010713	515
4010714	515
4010719	515
4011999	515
4012883	512
4023571	512
4023607	512
4023633	512
4231000ZXF09005M04001	217
43004469	342
43004469	380
43004471	342
43004471	380
43004472	342
43004472	380
43004473	342
43004473	380
43005604	380
43005611	342
43005611	380
43005617	342
43005617	380
43005627	342
43005627	380
43005642	342
43005642	380
4315/GS	560
4315/GS	560
4355-51	386
4355-51	387
4355-51	389
4402003	398
4402012	411
4440000A	403
4440001A	403
4470001	401
4471900	402
4471901	402
4480001	396
4480002	396
4480003	396
4481001	400
4483007	399
4483008	399
4483008	399
4483009	399
4484008	401
4484008	397
4502003	398
4502012	411
4570001	401
4571900	402
4571901	402
4580001	396
4580002	396
4581001	400
4583007	399
4583008	399
4583009	399
4584008	401
4588001	397
4588003	397
4602003	398
4670001	401
4671900	402
4671901	402
4680001	396
4680002	396
4680003	396
4681001	400
4683007	399
4683008	399
4683009	399
4684008	401
4688001	397
4688003	397

5

5012 09 11	74
5012 09 11	214
5012 09 14	71
5012 09 14	72
5012 09 14	73
5012 09 14	74
5012 09 14	75
5012 09 14	93
5012 09 14	94
5012 09 14	214
5012 11 14	71
5012 11 14	72
5012 11 14	73
5012 11 14	74
5012 11 14	75
5012 11 14	76
5012 11 14	77
5012 11 14	93
5012 11 14	94
5012 11 17	214
5012 11 17	74
5012 11 17	76
5012 11 17	77
5012 11 17	93
5012 11 17	94
5012 11 17	214
5012 14 17	71
5012 14 17	72
5012 14 17	73
5012 14 17	74
5012 14 17	75
5012 14 17	76
5012 14 17	77
5012 14 17	93
5012 14 17	94
5012 14 17	214
5012 17 22	71
5012 17 22	72
5012 17 22	73
5012 17 22	74
5012 17 22	75
5012 17 22	76
5012 17 22	77
5012 17 22	93
5012 17 22	94
5012 17 22	214
5012 17 22	76
5012 17 22	77
5012 17 22	93
5012 17 22	94
5012 22 27	93
5012 22 27	94
5012 22 27	214
5012 27 36	214
5108003	195
511239-001	278
511239-002	240
511239-002	248
511239-002	278
511239-003	278
511239-005	278
511239-006	278
511239-007	278
511239-009	240
511239-009	278
511239-011	278
511239-012	278
511239-013	278
511239-014	248
511239-014	278
515488-059	253
515488-059	278
5191-88	395
5191-89	395
5203-06	395
5208003	195
54101017	328
54101019	328
54101020	329
54101021	329
54101022	329
54191023	330
54191027	330
54191028	330
54191029	331
54191030	331
54202017	328
54202019	328
54202020	329
54202021	329
54202022	329
54292023	330
54292027	330
54292028	330
54292029	331
54292030	331
54301017	328
54301019	328
54301020	329
54301021	329
54301022	329
54391023	330
54391027	330
54391028	330
54391029	331

54391030	331
54400001	328
54400003	328
54400007	329
54400008	329
54490017	330
54490021	330
54490022	330
54490023	331
55102082	322
55102083	322
55102084	323
55102085	322
55102086	322
55102087	323
55102088	322
55102089	322
55102092	322
55102093	322
55102096	322
55102097	322
55102098	322
55102099	322
5521500	411
5522500	411
5523-52</	

6

608012311.....	409
608032311.....	409
608062311.....	409
609012311.....	409
609032311.....	409
609062311.....	409
6102001.....	398
6102012.....	411
614357D023102.....	408
614357D023103.....	408
614357D023105.....	408
614357D023106.....	408
614357D023110.....	408
614357D023116.....	408
614357D023140.....	408
614357D023150.....	408
614357D023160.....	408
614357D123102.....	408
614357D123103.....	408
614357D123105.....	408
614357D123106.....	408
614357D123110.....	408
614357D123116.....	408
614357D123140.....	408
614357D123150.....	408
614357D123160.....	408
614357D223102.....	408
614357D223103.....	408
614357D223105.....	408
614357D223106.....	408
614357D223110.....	408
614357D223116.....	408
614357D223140.....	408
614357D223150.....	408
614357D223160.....	408
614357D723102.....	408
614357D723103.....	408
614357D723105.....	408
614357D723106.....	408
614357D723110.....	408
614357D723116.....	408
614357D723140.....	408
614357D723150.....	408
614357D723160.....	408
614359D023102.....	408
614359D023103.....	408
614359D023106.....	408
614359D023110.....	408
614359D023116.....	408
614359D023120.....	408
614359D023140.....	408
614359D023150.....	408
614359D023160.....	408
614359D123102.....	408
614359D123103.....	408
614359D123105.....	408
614359D123106.....	408
614359D123110.....	408
614359D123116.....	408
614359D123140.....	408
614359D123150.....	408
614359D123160.....	408
614359D223102.....	408
614359D223103.....	408
614359D223105.....	408
614359D223106.....	408
614359D223110.....	408
614359D223116.....	408
614359D223140.....	408
614359D223150.....	408
614359D223160.....	408
6170002.....	401
6171002.....	402
6171003.....	402
6180001.....	396
6180002.....	396
6180003.....	396
6188001.....	397
6188003.....	397
620100D8175E13/3.....	163
620100D8175E14A3.....	163
620100D881413/3.....	162
620100D881414A3.....	162
620100D88213/3.....	162
620100D88214A3.....	162
620100D883213/3.....	163
620100D883214A3.....	163
620125D8175E14A3.....	162
620125D881414A3.....	163
620125D88214A3.....	162
620125D883214A3.....	163
620150D8175E14A3.....	163
620150D881414A3.....	162

620150D88214A3.....	162
620150D883214A3.....	163
62015D181410/N.....	162
62015D18210/N.....	162
62015D8175E10/N.....	163
62015D881410/N.....	162
62015D88210/N.....	162
62015D883210/N.....	163
6202001.....	398
6202012.....	411
62020D181410/N.....	162
62020D18210/N.....	162
62020D8175E10/N.....	163
62020D881410/N.....	162
62020D88210/N.....	162
62020D883210/N.....	163
62025D181410/N.....	162
62025D18210/N.....	162
62025D8175E10/N.....	163
62025D881410/N.....	162
62025D88210/N.....	162
62025D883210/N.....	163
62032D181411/N.....	162
62032D18211/N.....	162
62032D8175E11/N.....	163
62032D881411/N.....	162
62032D88211/N.....	162
62032D883211/N.....	163
62040D181411/N.....	162
62040D18211/N.....	162
62040D8175E11/N.....	163
62040D881411/N.....	162
62040D88211/N.....	162
62040D883211/N.....	163
62050D181412/N.....	162
62050D18212/N.....	162
62050D8175E12/N.....	163
62050D881412/N.....	162
62050D88212/N.....	162
62050D883212/N.....	163
62065D8175213/2.....	163
62065D8175213/3.....	163
62065D881413/2.....	162
62065D881413/3.....	162
62065D88213/2.....	162
62065D88213/3.....	162
62065D883213/2.....	163
62065D883213/3.....	163
62080D8175E13/3.....	163
62080D8175E14A2.....	163
62080D881413/3.....	162
62080D881414A2.....	162
62080D88213/3.....	162
62080D88214A2.....	162
62080D883213/3.....	163
62080D883214A2.....	163
6212-50.....	391
6212-51.....	391
6270002.....	401
6271002.....	402
6271003.....	402
6280001.....	396
6280002.....	396
6280003.....	396
6281001.....	400
6288001.....	397
6288003.....	397
6302001.....	398
6302012.....	411
6370002.....	401
6371002.....	402
6371003.....	402
6380001.....	396
6380002.....	396
6380003.....	396
6381001.....	400
6388001.....	397
6388003.....	397
6402001.....	398
6402012.....	411
6470002.....	401
6471002.....	402
6471003.....	402
6480001.....	396
6480002.....	396
6480003.....	396
6481001.....	400
6488001.....	397
6488003.....	397
655100D531320.....	159
655100D535280.....	159
655100D53820.....	159
655100D538140.....	159
655100D535280.....	159
655125D531320.....	159
655125D535280.....	159
655125D538140.....	159
655125D53820.....	159
655150D531320.....	159
655150D535280.....	159
655150D538140.....	159
655150D53820.....	159
655200D521320.....	159
655200D525280.....	159
655200D528140.....	159
655200D52820.....	159
655250D521320.....	159
655250D525280.....	159
655250D528140.....	159
655250D52820.....	159

655250D52820.....	159
65525D531320.....	159
65525D535280.....	159
65525D538140.....	159
65525D53820.....	159
655300D521320.....	159
655300D525280.....	159
655300D528140.....	159
655300D52820.....	159
65540D531320.....	159
65540D535280.....	159
65540D538140.....	159
65540D53820.....	159
65550D531320.....	159
65550D535280.....	159
65550D538140.....	159
65550D53820.....	159
65550D531320.....	159
65550D535280.....	159
65550D538140.....	159
65550D53820.....	159
65550D531320.....	159
65550D535280.....	159
65550D538140.....	159
65550D53820.....	159
65580D531320.....	159
65580D535280.....	159
65580D538140.....	159
65580D53820.....	159
656100D5313214R1.....	164
656100D5352814R1.....	164
656100D5381414R1.....	163
656100D538214R1.....	163
656125D5313215R2.....	164
656125D5352815R2.....	164
656125D5381415R2.....	163
656125D538215R2.....	163
656150D5313215R2.....	164
656150D5352815R2.....	164
656150D5381415R2.....	163
656200D5213216R2.....	164
656200D5252816R2.....	164
656200D5281416R3.....	163
656200D528216R3.....	163
65625D5313212R2.....	164
65625D5352812R2.....	164
65625D5381412R2.....	163
65625D538212R2.....	163
65640D5313212R2.....	164
65640D5352812R2.....	164
65640D5381412R2.....	163
65640D538212R2.....	163
65650D5313213R1.....	164
65650D5352813R1.....	164
65650D5381413R1.....	163
65650D538213R1.....	163
65660D2159P.....	517
65660D2160P.....	517
65660D2161P.....	517
65660D2162P.....	517
65660D2163P.....	517
675100D8175E0.....	159
675100D88140.....	158
675100D8820.....	158
675100D88320.....	159
675100D8175E0.....	159
675125D88140.....	158
675125D8820.....	158
675125D88320.....	159
675150D8175E0.....	159
675150D88140.....	158
675150D8820.....	158
675150D88320.....	159
67515D18140.....	158
67515D1820.....	158
67515D8175E0.....	159
67515D88140.....	158
67515D8820.....	158
67515D88320.....	159
675200D528140.....	158
675200D18140.....	158
67520D1820.....	158
67520D8175E0.....	159
67520D88140.....	158
67520D8820.....	158
67520D88320.....	159
675250D528140.....	158
67525D18140.....	158
67525D1820.....	158
67525D8175E0.....	159
67525D88140.....	158
67525D8820.....	158
67525D88320.....	159
67532D18140.....	158
67532D1820.....	158
67532D8175E0.....	159
67532D88140.....	158
67532D8820.....	158
67532D88320.....	159
67540D18140.....	158
67540D1820.....	158

67540D8175E0.....	159
67540D88140.....	158
67540D8820.....	158
67540D88320.....	159
67550D18140.....	158
67550D1820.....	158
67550D8175E0.....	159
67550D88140.....	158
67550D8820.....	158
67550D88320.....	159
67565D817520.....	159
67565D88140.....	158
67565D8820.....	158
67565D88320.....	159
67580D8175E0.....	159
67580D88140.....	158
67580D8820.....	158
67580D88320.....	159

7

7001000100.....	359
7001000110.....	360
7001000200.....	359
7001000210.....	360
7001000400.....	360
7001000510.....	360
7001000600.....	360
7001000700.....	360
7001000710.....	360
7001000900.....	360
7001000910.....	360
7010000100.....	356
7010000200.....	356
7010000300.....	356
7010000400.....	356
7010000500.....	357
7010000600.....	357
7010000700.....	357
7010001000.....	357
7010001100.....	357
7010001150.....	356
7010001160.....	356
7010001200.....	357
7010001300.....	357
7010001400.....	356
7010001500.....	357
7010001600.....	357
7010001700.....	356
7010010100.....	348
7010010200.....	348
7010010400.....	348
7010011000.....	348
7010011200.....	349
7010011300.....	349
7010012100.....	349
7010012200.....	349
7010012300.....	349
7010020100.....	350
7010020200.....	350
7010020300.....	350
7010020400.....	350
7010020500.....	350
7010021100.....	350
7010021200.....	350
7010021300.....	351
7010021600.....	351
7010022100.....	351
7010022200.....	351
7010022400.....	351
7010022500.....	351
7020000100.....	356
7020000200.....	356
7020000300.....	356
7020000400.....	356
7020000500.....	357
7020000600.....	357
7020000700.....	357
7020000900.....	357
7020001000.....	357
7020001100.....	357
7020001400.....	356
7020001700.....	356
7020010100.....	348
7020010200.....	348
7020010400.....	348
7020011000.....	348
7020011100.....	348
7020011200.....	349
7020011300.....	349
7020012100.....	349
7020012200.....	349
7020012300.....	349

INDEX

811R32D7R21141621600	548	8259400.9151.02400	237	88100760	327	88128408	339	9451707	404
811R32D7R21141632500	548	8259400.9154.23049	237	88100761	327	88128408	340	9451711	404
811R40D7R21141671600	547	8259401.9151.02400	245	88100762	327	88128409	337	9451713	404
811R40D7R21141682500	547	8259401.9154.23049	245	88100763	327	88128409	339	9500401	403
811R40D7R21141693300	547	8259500.9401.02400	237	88100764	327	88128409	340	9500402	403
811R40D7R21141671600	548	8259500.9404.23049	237	88100765	327	88130754	344	9602 WB	517
811R40D7R21141682500	548	8259501.8401.02400	246	88100773	327	88130755	345	9630301	404
811R40D7R21141693300	548	8259501.8404.23049	246	88100800	327	88130775	344	9630301	411
811R50D7R21141712500	547	8259600.9401.02400	237	88100801	327			9651705	404
811R50D7R21141724000	547	8259600.9404.23049	237	88100802	327			9651706	404
811R50D7R21141736400	547	8259601.8401.02400	246	88100803	327			9651707	404
811R50D7R21141712500	548	8259601.8404.23049	246	88100804	327			9651711	404
811R50D7R21141724000	548	8259700.9401.02400	237	88100805	327			9651712	404
811R50D7R21141736400	548	8259700.9404.23049	237	88100806	327			9700401	403
811R65D7R21141759000	547	8259701.8401.02400	246	88100970	409			9700402	403
811R65D7R211417713000	547	8259701.8404.23049	246	88122404	277	9000401	541	9700403	403
811R65D7R21141759000	548	8273000.9101.02400	243	88122404	288	9000402	541	9700404	403
811R65D7R211417713000	548	8273000.9101.23050	243	88122404	321	9000802	404	97701879	240
8240000.9101.02400	241	8273001.9101.02400	251	88122404	327	9004/GS	560	97701879	248
8240000.9101.23050	241	8273001.9101.23050	251	88122404	336	9031001C	414	97701886	240
8240001.9101.02400	249	8273200.9101.02400	243	88122404	341	9031002C	414	97701886	248
8240001.9101.23050	249	8273200.9101.23050	243	88122404	352	9031003C	414	97801528	514
8240100.9101.02400	241	8273201.9101.02400	251	88122404	402	9031004C	414	99100110	409
8240100.9101.23050	241	8273201.9101.23050	251	88122405	277	9031005C	414	99100111	409
8240101.9101.02400	249	8273300.9101.02400	243	88122405	288	9031006C	414		
8240101.9101.23050	249	8273300.9101.23050	243	88122405	321	9031007C	414		
8240200.9101.02400	241	8273300.9101.23050	243	88122405	327	9031008C	414		
8240200.9101.23050	241	8273301.9101.02400	251	88122405	327	9031009C	414		
8240201.9101.02400	249	8273301.9101.23050	251	88122405	336	9031010C	414		
8240201.9101.23050	249	8273400.9101.02400	243	88122405	341	9031011C	414		
8240300.9101.02400	241	8273400.9101.23050	243	88122405	352	9031012C	414		
8240300.9101.23050	241	8273401.9101.02400	251	88122405	402	9031014C	414		
8240301.9101.02400	249	8273401.9101.23050	251	88122406	277	9031015C	414	A651A0000000400	377
8240301.9101.23050	249	8273500.9151.02400	243	88122406	288	9031016C	414	A651A0000000401	377
8240400.9101.02400	241	8273500.9151.23050	243	88122406	341	9031101V	414	A651A0000000402	377
8240400.9101.23050	241	8273501.9151.02400	251	88122407	277	9031102V	414	A651A0000000403	377
8240401.9101.02400	249	8273501.9151.23050	251	88122407	288	9031103V	414	A651A0000000404	377
8240401.9101.23050	249	8273600.9151.02400	243	88122407	321	9031104V	414	A651A0000000405	377
8240401.9101.23050	249	8273600.9151.23050	243	88122407	327	9031105V	414	A651A0000000406	377
8240500.9151.02400	241	8273601.9151.02400	251	88122407	336	9031106V	414	A651A0000000407	377
8240500.9151.23050	241	8273601.9151.23050	251	88122407	341	9031107V	414	A651A0000000408	377
8240501.9151.02400	249	8273700.9151.02400	243	88122407	352	9031108V	414	A651A0000000409	377
8240501.9151.23050	249	8273700.9151.23050	243	88122407	402	9031109V	414	A651A0000000410	377
8240600.9151.02400	241	8273701.9151.02400	251	88122410	277	9031111V	414	A651A0000000411	377
8240600.9151.23050	241	8273701.9151.23050	251	88122410	288	9031112V	414	A651A0000000412	377
8240601.9151.02400	249	831R20D7R211414606	548	88122410	321	9031114V	414	A651A0000000413	377
8240601.9151.23050	249	831R20D7R211414710	548	88122410	327	9031115V	414	A651A0000000414	377
8240700.9151.02400	241	831R20D7R211414816	548	88122410	336	9031116V	414	A651A0000000415	377
8240700.9151.23050	241	831R20D7R211414925	548	88122410	341	9031201B	414	A652A0000000001	377
8240701.9151.02400	249	831R20D7R211414606	549	88122410	352	9031202B	414	A652A0000000002	377
8240701.9151.23050	249	831R20D7R211414710	549	88122410	402	9031203B	414	A652A0000000003	377
8254000.9301.02400	236	831R20D7R211414816	549	88122413	277	9031204B	414	A652A0000000004	377
8254000.9304.23049	236	831R20D7R211414925	549	88122413	288	9031205B	414	A652A0000000005	377
8254001.9151.02400	244	831R25D7R211415210	548	88122413	321	9031206B	414	A652A0000000006	377
8254001.9154.23049	244	831R25D7R211415316	548	88122413	327	9031207B	414	A652A0000000007	377
8254001.9301.02400	245	831R25D7R211415425	548	88122413	336	9031208B	414	A652A0000000008	377
8254001.9304.23049	245	831R25D7R211415540	548	88122413	341	9031209B	414	A652A0000000009	377
8254100.9301.02400	236	831R25D7R211415210	549	88122413	352	9031211B	414	A652A0000000010	377
8254100.9304.23049	236	831R25D7R211415316	549	88122413	402	9031212B	414	A652A0000000011	377
8254101.9151.02400	244	831R25D7R211415425	549	88122602	277	9031214B	414	A652A0000000012	377
8254101.9154.23049	244	831R25D7R211415540	549	88122602	288	9031215B	414	A652A0000000013	377
8254101.9301.02400	245	831R32D7R211416140	548	88122602	321	9031216B	414	A652A0000000014	377
8254101.9304.23049	245	831R32D7R211416264	548	88122602	336	9031301C	414	A652A0000000015	377
8254200.9301.02400	236	831R32D7R2114163100	548	88122602	342	9031302C	414	A652A0000000016	377
8254200.9304.23049	236	831R32D7R211416140	549	88122602	380	9031303C	414	A652A0000000017	377
8254201.9151.02400	244	831R32D7R211416264	549	88122602	402	9031401V	414	A652A0000000018	377
8254201.9154.23049	244	831R32D7R2114163100	549	88122603	277	9031402V	414	A652A0000000019	377
8254201.9301.02400	245	831R40D7R211416760	548	88122603	288	9031403V	414	A652A0000000020	377
8254201.9304.23049	245	831R40D7R2114168100	548	88122603	321	9031501B	414	A652A0000000021	377
8254300.9301.02400	236	831R40D7R2114169120	548	88122603	336	9031502B	414	A652A0000000022	377
8254300.9304.23049	236	831R40D7R211416760	549	88122603	342	9031503B	414	A652A0000000023	377
8254301.9151.02400	244	831R40D7R2114168100	549	88122603	380	9041001	413	A653A0000000024	377
8254301.9154.23049	244	831R40D7R2114169120	549	88122603	402	9041002	413	A653A0000000025	377
8254301.9301.02400	245	831R50D7R2114171100	548	88122604	277	9041003	413	A653A0000000026	377
8254301.9304.23049	245	831R50D7R2114172160	548	88122604	288	9041004	413	A653A0000000027	377
8254400.9301.02400	236	831R50D7R2114173250	549	88122604	342	9041005	413	A653A0000000028	377
8254400.9304.23049	236	831R50D7R2114171100	549	88122604	380	9041201	413	A653A0000000029	377
8254401.9151.02400	244	831R50D7R2114172160	549	88122605	277	9041202	413	A653A0000000030	377
8254401.9154.23049	244	831R50D7R2114173250	549	88122605	288	9041203	413	A653A0000000031	377
8254401.9301.02400	245	831R65D7R2114175340	548	88122605	321	9041204	413	A653A0000000032	377
8254401.9304.23049	245	831R65D7R2114177450	548	88122605	336	9041205	413	A653A0000000033	377
8254500.9401.02400	236	831R65D7R2114175340	549	88122605	342	9100/6	560	A653A0000000034	377
8254500.9404.23049	236	831R65D7R2114177450	549	88122605	380	9200701	195	A653A0000000035	377
8254501.8401.02400	245	8401	560	88122605	402	9200703	403	A653A0000000036	377
8254501.8404.23049	245	8404	560	88122608	277	9200710	411	A653A0000000037	377
8254600.9401.02400	236	8406	560	88122608	288	9300402	403	A653A0000000038	377
8254600.9404.23049	236	8408	560	88122608	321	9300403	403	A653A0000000039	377
8254601.8401.02400	245	8410	560	88122608	336	9300803	403	A653A0000000040	377
8254601.8404.23049	245	8424	560	88122608	342	93301803	404	AB5100	301
8254700.9401.02400	236	8426	560	88122608	380	9330301	403	AB5125	301
8254700.9404.23049	236	8427	560	88122608	402	9330301	404	AB5160	301
8254701.8401.02400	245	88100034	327	88122611	277	9351705	404	AB5200	301
8254701.8404.23049	245	88100035	327	88122611	288	9351706	404	AB532	301
8259000.9151.02400	237	88100036	327	88122611	342	9351707	404	AB540	301
8259000.9154.23049	237	88100037	327	88122611	380	9351711	404	AB550	

INDEX

BAFP.001.050.....	70	BASP.002.002.....	73	BATM.014.012.....	44	BATM.030.034.....	53	BATX.001.025.....	69
BAFP.001.065.....	70	BASP.002.003.....	73	BATM.014.034.....	44	BATM.030.038.....	53	BATX.001.032.....	69
BAFP.001.080.....	70	BASP.002.004.....	73	BATM.014.044.....	44	BATM.030.044.....	53	BATX.001.040.....	69
BAFP.001.100.....	70	BASP.002.012.....	73	BATM.014.054.....	44	BATM.031.002.....	48	BATX.001.050.....	69
BAFP.001.125.....	70	BASP.002.014.....	73	BATM.014.064.....	44	BATM.031.003.....	48	BATX.001.065.....	69
BAFP.001.150.....	70	BASP.002.022.....	73	BATM.015.012.....	53	BATM.031.012.....	48	BATX.001.080.....	69
BAFP.001.200.....	70	BASP.002.034.....	73	BATM.015.014.....	53	BATM.031.014.....	48	BATX.001.100.....	69
BAFP.002.040.....	70	BASP.002.038.....	73	BATM.015.018.....	53	BATM.031.022.....	48	BAWM.001.015.....	50
BAFP.002.050.....	70	BASP.002.044.....	73	BATM.015.034.....	53	BATM.031.034.....	48	BAWM.001.020.....	50
BAFP.002.065.....	70	BASP.002.054.....	73	BATM.015.038.....	53	BATM.031.038.....	48	BAWM.001.025.....	50
BAFP.002.080.....	70	BASP.002.064.....	73	BATM.015.044.....	53	BATM.031.044.....	48	BAWM.001.032.....	50
BAFP.002.100.....	70	BATM.001.012.....	38	BATM.016.012.....	53	BATM.031.054.....	48	BAWM.001.040.....	50
BAFP.002.125.....	70	BATM.001.014.....	38	BATM.016.014.....	53	BATM.031.064.....	48	BAWM.001.050.....	50
BAFP.002.150.....	70	BATM.001.018.....	38	BATM.016.034.....	53	BATM.032.002.....	48	BAWM.001.065/16.....	50
BAFP.002.200.....	70	BATM.001.034.....	38	BATM.016.038.....	53	BATM.032.003.....	48	BAWM.001.065/40.....	50
BAFP.003.015.....	75	BATM.001.038.....	38	BATM.016.044.....	53	BATM.032.004.....	48	BAWM.001.080.....	50
BAFP.003.020.....	75	BATM.002.012.....	38	BATM.018.002.....	54	BATM.032.012.....	48	BAWM.001.100/16.....	50
BAFP.003.025.....	75	BATM.002.014.....	38	BATM.018.003.....	54	BATM.032.014.....	48	BAWM.001.100/40.....	50
BAFP.003.032.....	75	BATM.002.018.....	38	BATM.018.012.....	54	BATM.032.022.....	48	BAWM.002.015.....	65
BAFP.003.040.....	75	BATM.002.034.....	38	BATM.018.014.....	54	BATM.032.034.....	48	BAWM.002.020.....	65
BAFP.003.050.....	75	BATM.002.038.....	38	BATM.018.022.....	54	BATM.032.038.....	48	BAWM.002.025.....	65
BAFP.003.065.....	75	BATM.003.002.....	39	BATM.018.034.....	54	BATM.032.044.....	48	BAWM.002.032.....	65
BAFP.003.080.....	75	BATM.003.003.....	39	BATM.018.038.....	54	BATM.032.054.....	48	BAWM.002.040.....	65
BAFP.003.100.....	75	BATM.003.004.....	39	BATM.018.044.....	54	BATM.032.064.....	48	BAWM.002.050.....	65
BAFP.003.125.....	75	BATM.003.012.....	39	BATM.018.054.....	54	BATM.033.002.....	49	BAWM.002.065/16.....	65
BAFP.003.150.....	75	BATM.003.012.....	510	BATM.018.064.....	54	BATM.033.012.....	49	BAWM.002.065/40.....	65
BAFP.003.200.....	75	BATM.003.012.....	511	BATM.019.002.....	54	BATM.033.014.....	49	BAWM.002.080.....	65
BAFP.004.015.....	75	BATM.003.014.....	39	BATM.019.012.....	54	BATM.033.034.....	49	BAWM.002.100/16.....	65
BAFP.004.020.....	75	BATM.003.022.....	39	BATM.019.014.....	54	BATM.033.038.....	49	BAWM.002.100/40.....	65
BAFP.004.025.....	75	BATM.003.034.....	39	BATM.019.034.....	54	BATM.033.044.....	49	BAWM.003.015.....	64
BAFP.004.032.....	75	BATM.003.038.....	39	BATM.019.038.....	54	BATM.033.054.....	49	BAWM.003.020.....	64
BAFP.004.040.....	75	BATM.003.044.....	39	BATM.019.044.....	54	BATM.033.064.....	49	BAWM.003.025.....	64
BAFP.004.050.....	75	BATM.003.054.....	39	BATM.019.054.....	54	BATM.034.015.....	69	BAWM.003.032.....	64
BAFP.004.065.....	75	BATM.003.064.....	39	BATM.019.064.....	54	BATM.034.020.....	69	BAWM.003.040.....	64
BAFP.004.080.....	75	BATM.004.002.....	39	BATM.020.002.....	55	BATM.034.025.....	69	BAWM.003.050.....	64
BAFP.004.100.....	75	BATM.004.012.....	39	BATM.020.003.....	55	BATM.034.032.....	69	BAWM.003.065.....	64
BAFP.004.125.....	75	BATM.004.014.....	39	BATM.020.012.....	55	BATM.034.040.....	69	BAWM.003.080.....	64
BAFP.004.150.....	75	BATM.004.034.....	39	BATM.020.014.....	55	BATM.034.050.....	69	BAWM.003.100.....	64
BAFP.004.200.....	75	BATM.004.038.....	39	BATM.020.022.....	55	BATM.034.065.....	69	BAWM.003.125.....	64
BAFP.005.025.....	76	BATM.004.044.....	39	BATM.020.034.....	55	BATM.034.080.....	69	BAWM.003.150.....	64
BAFP.005.032.....	76	BATM.004.054.....	39	BATM.020.038.....	55	BATM.034.100.....	69	BAWP.001.015.....	74
BAFP.005.040.....	76	BATM.004.064.....	39	BATM.020.044.....	55	BATM.035.015.....	69	BAWP.001.020.....	74
BAFP.005.050.....	76	BATM.005.002.....	46	BATM.020.054.....	55	BATM.035.020.....	69	BAWP.001.025.....	74
BAFP.005.065.....	76	BATM.005.012.....	46	BATM.020.064.....	55	BATM.035.025.....	69	BAWP.001.032.....	74
BAFP.005.080.....	76	BATM.005.014.....	46	BATM.021.002.....	56	BATM.035.032.....	69	BAWP.001.040.....	74
BAFP.005.100.....	76	BATM.005.034.....	46	BATM.021.003.....	56	BATM.035.040.....	69	BAWP.001.050.....	74
BAFP.006.025.....	76	BATM.005.038.....	46	BATM.021.004.....	56	BATM.035.050.....	69	BAWP.001.065.....	74
BAFP.006.032.....	76	BATM.005.044.....	46	BATM.021.012.....	56	BATM.035.065.....	69	BAWP.001.080.....	74
BAFP.006.040.....	76	BATM.005.054.....	46	BATM.021.014.....	56	BATM.035.080.....	69	BAWP.001.100.....	74
BAFP.006.050.....	76	BATM.005.064.....	46	BATM.021.022.....	56	BATM.035.100.....	69	BAWP.001.125.....	74
BAFP.006.065.....	76	BATM.006.002.....	46	BATM.021.034.....	56	BATM.036.002.....	49	BAWP.001.150.....	74
BAFP.006.080.....	76	BATM.006.012.....	46	BATM.021.038.....	56	BATM.036.012.....	49	BAWP.002.015.....	74
BAFP.006.100.....	76	BATM.006.014.....	46	BATM.021.044.....	56	BATM.036.014.....	49	BAWP.002.020.....	74
BAFP.007.025.....	77	BATM.006.034.....	46	BATM.021.054.....	56	BATM.036.034.....	49	BAWP.002.025.....	74
BAFP.007.032.....	77	BATM.006.038.....	46	BATM.021.064.....	56	BATM.036.038.....	49	BAWP.002.032.....	74
BAFP.007.040.....	77	BATM.006.044.....	46	BATM.022.002.....	57	BATM.036.044.....	49	BAWP.002.040.....	74
BAFP.007.050.....	77	BATM.006.054.....	46	BATM.022.003.....	57	BATM.036.054.....	49	BAWP.002.050.....	74
BAFP.007.065.....	77	BATM.006.064.....	46	BATM.022.004.....	57	BATM.036.064.....	49	BAWP.002.065.....	74
BAFP.007.080.....	77	BATM.007.012.....	39	BATM.022.012.....	57	BATM.037.002.....	63	BAWP.002.080.....	74
BAFP.007.100.....	77	BATM.007.014.....	39	BATM.022.014.....	57	BATM.037.012.....	63	BAWP.002.100.....	74
BAFP.008.025.....	77	BATM.007.034.....	39	BATM.022.022.....	57	BATM.037.014.....	63	BAWP.002.125.....	74
BAFP.008.032.....	77	BATM.007.038.....	39	BATM.022.034.....	57	BATM.037.022.....	63	BAWP.002.150.....	74
BAFP.008.040.....	77	BATM.007.044.....	39	BATM.022.038.....	57	BATM.037.034.....	63	BB16MM1.3.....	289
BAFP.008.050.....	77	BATM.009.002.....	40	BATM.022.044.....	57	BATM.037.038.....	63	BB16MU1.3.....	289
BAFP.008.065.....	77	BATM.009.003.....	40	BATM.022.054.....	57	BATM.037.044.....	63	BB24MM1.5.....	289
BAFP.008.080.....	77	BATM.009.004.....	40	BATM.022.064.....	57	BATM.037.054.....	63	BB24MU1.5.....	289
BAFP.008.100.....	77	BATM.009.012.....	40	BATM.023.002.....	57	BATM.037.064.....	63	BB32MM1.5.....	289
BASM.001.002.....	61	BATM.009.014.....	40	BATM.023.012.....	57	BATM.038.002.....	63	BB32MU1.5.....	289
BASM.001.003.....	61	BATM.009.022.....	40	BATM.023.014.....	57	BATM.038.012.....	63	BB40MM1.6.....	289
BASM.001.004.....	61	BATM.009.034.....	40	BATM.023.034.....	57	BATM.038.014.....	63	BB40MU1.6.....	289
BASM.001.012.....	61	BATM.009.038.....	40	BATM.023.038.....	57	BATM.038.022.....	63	BB48MM1.6.....	289
BASM.001.014.....	61	BATM.009.044.....	40	BATM.023.044.....	57	BATM.038.034.....	63	BB48MU1.6.....	289
BASM.001.022.....	61	BATM.009.054.....	40	BATM.023.054.....	57	BATM.038.038.....	63	BB8MM1.3.....	289
BASM.001.034.....	61	BATM.009.064.....	40	BATM.023.064.....	57	BATM.038.044.....	63	BB8MU1.3.....	289
BASM.001.038.....	61	BATM.010.002.....	41	BATM.024.002.....	40	BATM.038.054.....	63	BKEMAT 12.....	512
BASM.001.044.....	61	BATM.010.003.....	41	BATM.024.012.....	40	BATM.038.064.....	63	BKEMAT 12 CO.....	512
BASM.001.054.....	61	BATM.010.012.....	41	BATM.024.014.....	40	BATM.039.002.....	45	BKEMAT 13.....	499
BASM.001.064.....	61	BATM.010.014.....	41	BATM.024.034.....	40	BATM.039.012.....	45	BKEMAT 13.....	500
BASM.002.002.....	61	BATM.010.018.....	41	BATM.024.038.....	40	BATM.039.034.....	45	BKEMAT 13.....	512
BASM.002.003.....	61	BATM.010.022.....	41	BATM.024.044.....	40	BATM.039.044.....	45	BKEMAT 13 CO.....	512
BASM.002.004.....	61	BATM.010.034.....	41	BATM.024.054.....	40	BATM.039.054.....	45	BKEMAT 14.....	499
BASM.002.012.....	61	BATM.010.038.....	41	BATM.024.064.....	40	BATM.039.064.....	45	BKEMAT 14.....	500
BASM.002.014.....	61	BATM.010.044.....	41	BATM.025.002.....	55	BATM.040.012.....	58	BKEMAT 14.....	512
BASM.002.022.....	61	BATM.010.054.....	41	BATM.025.012.....	55	BATM.040.034.....	58	BKEMAT 14 CO.....	512
BASM.002.034.....	61	BATM.010.064.....	41	BATM.025.014.....	55	BATP.001.002.....	71	BKEMAT 16 CO.....	512
BASM.002.038.....	61	BATM.011.002.....	41	BATM.025.034.....	55	BATP.001.003.....	71	BKEMAT 20.....	512
BASM.002.044.....	61	BATM.011.012.....	41	BATM.025.038.....	55	BATP.001.004.....	71	BKEMAT 20 FM.....	512
BASM.002.054.....	61	BATM.011.014.....	41	BATM.025.044.....	55	BATP.001.012.....	71	BKEMAT 31U.....	499
BASM.002.064.....	61	BATM.011.018.....	41	BATM.025.054.....	55	BATP.001.014.....	71	BKEMAT 31U.....	500
BASM.003.002.....	62	BATM.011.034.....	41	BATM.025.064.....	55	BATP.001.022.....	71	BKEMAT 31U.....	512
BASM.003.012.....	62	BATM.011.038.....	41	BATM.026.002.....	56	BATP.001.034.....	71	BKEMAT 32U.....	499
BASM.003.014.....	62	BATM.011.044.....	41	BATM.026.012.....	56	BATP.001.038.....	71	BKEMAT 32U.....	500
BASM.003.034.....	62	BATM.011.054.....	41	BATM.026.014.....	56	BATP.001.044.....	71	BKEMAT 32U.....	512
BASM.003.038.....	62	BATM.011.064.....	41	BATM.026.034.....	56	BATP.001.054.....	71	BKEMAT 33U.....	512
BASM.003.044.....	62	BATM.012.002.....	42	BATM.026.038.....	56	BATP.001.064.....	71	BL64-201.....	389
BASM.003.054.....	62	BATM.012.012.....	42	BATM.026.044.....	56	BATP.002.002.....	71	BL64-301.....	389
BASM.003.064.....	62	BATM.012.014.....	42	BATM.026.054.....	56	BATP.002.003.....	71	BL64-401.....	389
BASP.001.002.....	73	BATM.012.034.....	42	BATM.026.064.....	56	BATP.002.004.....	71	BL64-601.....	389
BASP.001.003.....	73	BATM.012.038.....	42	BATM.027.012.....	45	BATP.002.012.....	71	BL68-601.....	389
BASP.001.004.....	73	BATM.012.044.....	42	BATM.027.014.....	45	BATP.002.014.....	71	BL68-801.....	389
BASP.001.012.....	73	BATM.012.054.....	42	BATM.027.044.....	45	BATP.002.022.....	71	BL68-A01.....	389
BASP.001.014.....	73	BATM.012.064.....	42	BATM.027.012.....	53	BATP.002.034.....	71	BL68-B01.....	389
BASP.001.022.....	73	BATM.013.012.....	43	BATM.029.014.....	53	BATP.002.038.....	71	BO-0040.....	257
BASP.001.034.....	73	BATM.013.014.....	43	BATM.029.034.....	53	BATP.002.			

BO-0355	256	BULM.003.065	85	BUWM.004.900	86	BUWP.002.080	93	C102412	263
BO-0375	256	BULM.003.080	85	BUWM.005.032	81	BUWP.002.100	93	C112682	287
BO-0520	254	BULM.003.100	85	BUWM.005.040	81	BUWP.002.125	93	C112838	287
BO-0520	255	BULM.003.125	85	BUWM.005.050	81	BUWP.002.150	93	C113443	283
BO-0520	256	BULM.003.150	85	BUWM.005.065	81	BUWP.002.200	93	C113444	286
BO-0540	254	BULM.003.200	85	BUWM.005.080	81	BUWP.002.250	93	C113684	283
BO-0540	255	BULM.003.250	85	BUWM.005.100	81	BUWP.002.300	93	C113685	286
BO-0540	256	BULM.003.300	85	BUWM.005.125	81	BUWP.002.350	93	C113686	286
BO-1010	254	BULM.003.350	85	BUWM.005.150	81	BUWP.002.400	93	C113825	283
BO-1010	255	BULM.003.400	85	BUWM.005.200	81	BUWP.002.450	93	C113826	283
BO-1030	254	BULP.001.050	94	BUWM.005.250	81	BUWP.002.500	93	C113827	286
BO-1030	255	BULP.001.065	94	BUWM.005.300	81	BUWP.002.600	93	C117271	282
BO-1110	254	BULP.001.080	94	BUWM.005.350	81	BUWP.003.025	93	C117273	284
BO-1110	255	BULP.001.100	94	BUWM.005.400	81	BUWP.003.040	93	C117274	284
BO-1130	254	BULP.001.125	94	BUWM.005.450	81	BUWP.003.050	93	C117275	284
BO-1130	255	BULP.001.150	94	BUWM.005.500	81	BUWP.003.065	93	C117279	282
BO-1210	254	BULP.001.200	94	BUWM.005.600	81	BUWP.003.080	93	C117280	282
BO-1210	255	BULP.001.250	94	BUWM.006.032	82	BUWP.003.100	93	C117281	282
BO-1230	254	BULP.001.300	94	BUWM.006.040	82	BUWP.003.125	93	C117281	285
BO-1230	255	BULP.002.050	94	BUWM.006.050	82	BUWP.003.150	93	C117282	282
BO-2210	254	BULP.002.065	94	BUWM.006.065	82	BUWP.003.200	93	C117282	285
BO-2210	255	BULP.002.080	94	BUWM.006.080	82	BUWP.003.250	93	C117283	282
BO-2230	254	BULP.002.100	94	BUWM.006.100	82	BUWP.003.300	93	C117285	284
BO-2230	255	BULP.002.125	94	BUWM.006.125	82	BUWP.003.350	93	C117286	284
BRK9001	495	BULP.002.150	94	BUWM.006.150	82	BUWP.003.400	93	C117289	282
BRK9002	495	BULP.002.200	94	BUWM.006.200	82	BUWP.003.450	93	C117290	282
BUAX.001.004	91	BULP.002.250	94	BUWM.006.250	82	BUWP.003.500	93	C117290	285
BUAX.001.004	92	BULP.002.300	94	BUWM.006.300	82	BUWP.003.600	93	C117640V	274
BUAX.001.006	91	BULP.003.050	94	BUWM.008.040	84	BUWP.004.025	93	C123432	286
BUAX.001.006	92	BULP.003.065	94	BUWM.008.050	84	BUWP.004.040	93	C123433	286
BUAX.001.007	91	BULP.003.080	94	BUWM.008.065	84	BUWP.004.050	93	C123670	274
BUAX.001.007	92	BULP.003.100	94	BUWM.008.080	84	BUWP.004.065	93	C127837	287
BUAX.001.008	91	BULP.003.125	94	BUWM.008.100	84	BUWP.004.080	93	C12BA400-X	333
BUAX.001.008	92	BULP.003.150	94	BUWM.008.125	84	BUWP.004.100	93	C12BB400-X	333
BUAX.001.009	91	BULP.003.200	94	BUWM.008.150	84	BUWP.004.125	93	C12BB500-X	334
BUAX.001.009	92	BULP.003.250	94	BUWM.008.200	84	BUWP.004.150	93	C12BB600-X	333
BUAX.001.012	91	BULP.003.300	94	BUWM.009.050	90	BUWP.004.200	93	C12BB700-X	333
BUAX.001.012	92	BULP.004.050	94	BUWM.009.065	90	BUWP.004.250	93	C131038V	242
BUAX.001.013	91	BULP.004.065	94	BUWM.009.080	90	BUWP.004.300	93	C131038V	250
BUAX.001.013	92	BULP.004.080	94	BUWM.009.100	90	BUWP.004.350	93	C131039V	242
BUAX.001.014	91	BULP.004.100	94	BUWM.009.125	90	BUWP.004.400	93	C131039V	250
BUAX.001.014	92	BULP.004.125	94	BUWM.010.050	90	BUWP.004.450	93	C131040V	242
BUAX.001.016	91	BULP.004.150	94	BUWM.010.065	90	BUWP.004.500	93	C131040V	250
BUAX.001.016	92	BULP.004.200	94	BUWM.010.080	90	BUWP.004.600	93	C131447	253
BUAX.001.017	91	BULP.004.250	94	BUWM.010.100	90	BV 112 A	294	C131600	240
BUAX.001.017	92	BULP.004.300	94	BUWM.010.125	90	BV 112 I	293	C131606	240
BUAX.002.004	91	BUWM.001.025	80	BUWM.011.050	83	BV 150 A	294	C131609	240
BUAX.002.004	92	BUWM.001.040	80	BUWM.011.065	83	BV 150 I	293	C131618	240
BUAX.002.005	91	BUWM.001.050	80	BUWM.011.080	83	BV 225 A	294	C132486	236
BUAX.002.005	92	BUWM.001.065	80	BUWM.011.100	83	BV 225 I	293	C132486	260
BUAX.002.007	91	BUWM.001.080	80	BUWM.011.125	83	BV 312 I	293	C132487	236
BUAX.002.007	92	BUWM.001.100	80	BUWM.011.150	83	BV 312A	294	C132487	259
BUAX.002.009	91	BUWM.001.125	80	BUWM.011.200	83	BV 425 A	294	C132488	236
BUAX.002.009	92	BUWM.001.150	80	BUWM.011.250	83	BV 425 I	293	C132488	260
BUAX.002.010	91	BUWM.001.200	80	BUWM.012.050	88	BV 650 A	294	C132489	236
BUAX.002.010	92	BUWM.001.250	80	BUWM.012.065	88	BV 650 I	293	C132489	259
BUAX.002.011	91	BUWM.001.300	80	BUWM.012.080	88			C132490	236
BUAX.002.011	92	BUWM.001.350	80	BUWM.012.100	88			C132490	260
BUAX.002.012	91	BUWM.001.400	80	BUWM.012.125	88			C132491	236
BUAX.002.012	92	BUWM.001.450	80	BUWM.012.150	88			C132491	259
BUAX.002.013	91	BUWM.001.500	80	BUWM.012.200	88			C133612	263
BUAX.002.013	92	BUWM.001.600	80	BUWM.012.250	88			C133613	263
BUAX.002.014	91	BUWM.002.025	80	BUWM.012.300	88			C133800	238
BUAX.002.014	92	BUWM.002.040	80	BUWM.012.350	88			C133801	238
BUAX.002.015	91	BUWM.002.050	80	BUWM.012.400	88			C133801	259
BUAX.002.015	92	BUWM.002.065	80	BUWM.012.500	88			C133802	238
BUAX.002.016	91	BUWM.002.080	80	BUWM.013.050	88			C133802	259
BUAX.002.016	92	BUWM.002.100	80	BUWM.013.065	88			C133861	263
BUAX.002.017	91	BUWM.002.125	80	BUWM.013.080	88			C133862	263
BUAX.002.017	92	BUWM.002.150	80	BUWM.013.100	88			C133862	263
BUAX.003.006	91	BUWM.002.200	80	BUWM.013.125	88			C133863	263
BUAX.003.006	92	BUWM.002.250	80	BUWM.013.150	88			C133864	263
BUAX.003.007	91	BUWM.002.300	80	BUWM.013.200	88			C140209	270
BUAX.003.007	92	BUWM.002.350	80	BUWM.013.250	88			C140209	273
BUAX.003.009	91	BUWM.002.400	80	BUWM.013.300	88			C140211	270
BUAX.003.009	92	BUWM.002.450	80	BUWM.013.350	88			C140211	273
BUAX.003.010	91	BUWM.002.500	80	BUWM.013.400	88			C140213	270
BUAX.003.010	92	BUWM.002.600	80	BUWM.013.450	88			C140213	273
BUAX.003.011	91	BUWM.003.032	86	BUWM.014.050	89			C140215	270
BUAX.003.011	92	BUWM.003.040	86	BUWM.014.065	89			C140215	273
BUAX.003.012	91	BUWM.003.050	86	BUWM.014.080	89			C204-221.230/50	287
BUAX.003.012	92	BUWM.003.065	86	BUWM.014.100	89			C204-221.24/DC	287
BULM.001.050	85	BUWM.003.080	86	BUWM.014.125	89			C205-221.230/50	287
BULM.001.065	85	BUWM.003.100	86	BUWM.015.050	89			C205-221.24/DC	287
BULM.001.080	85	BUWM.003.125	86	BUWM.015.065	89			C206-221.230/50	287
BULM.001.100	85	BUWM.003.150	86	BUWM.015.080	89			C206-221.24/DC	287
BULM.001.125	85	BUWM.003.200	86	BUWM.015.100	89			C23BA400-X	333
BULM.001.150	85	BUWM.003.250	86	BUWM.015.125	89			C23BB400-X	333
BULM.001.200	85	BUWM.003.300	86	BUWP.001.025	93			C23BB500-X	334
BULM.001.250	85	BUWM.004.032	86	BUWP.001.040	93			C23BB600-X	333
BULM.001.300	85	BUWM.004.040	86	BUWP.001.050	93			C302272	238
BULM.001.350	85	BUWM.004.050	86	BUWP.001.065	93			C302276	238
BULM.001.400	85	BUWM.004.065	86	BUWP.001.080	93			C302283	238
BULM.002.050	87	BUWM.004.080	86	BUWP.001.100	93			C302283	260
BULM.002.065	87	BUWM.004.100	86	BUWP.001.125	93			C302286	238
BULM.002.080	87	BUWM.004.1000	86	BUWP.001.150	93			C302286	260
BULM.002.100	87	BUWM.004.125	86	BUWP.001.200	93			C302316	263
BULM.002.125	87	BUWM.004.150	86	BUWP.001.250	93			C302322	264
BULM.002.150	87	BUWM.004.200	86	BUWP.001.300	93			C302323	264
BULM.002.200	87	BUWM.004.250	86	BUWP.001.350	93			C302328	239
BULM.002.250	87	BUWM.004.300	86	BUWP.001.400	93			C302329	239
BULM.002.300	87	BUWM.004.350	86	BUWP.001.450	93			C302334	247
BULM.002.350	87	BUWM.004.400	86	BUWP.001.500	93			C302335	247
BULM.002.400	87	BUWM.004.450	86	BUWP.001.600	93			C302337	247
BULM.002.450	87	BUWM.004.500	86	BUWP.002.025	93			C302339	247
BULM.002.500	87	BUWM.004.600	86	BUWP.002.040	93			C302340	247
BULM.002.600	87	BUWM.004.700	86	BUWP.002.050	93			C302372	238
BULM.003.050	85	BUWM.004.800	86	BUWP.002.065	93			C302375	238
								C302417	264

C	
C 10 LDR-500 -08	492
C 10 LDR-500 -10	492
C 15 LDR-500-08	492
C 15 LDR-500-10	492
C 15-08	490
C 15-10	490
C 15-13	490
C 16-08	490
C 16-10	490
C 16-13	490
C 20 LDR-500 -08	492
C 20 LDR-500 -10	492
C 20-08	490
C 20-10	490
C 20-13	490
C 25-08	490
C 25-10	490
C 25-13	490
C 3 LDR-270-10	492
C 30-08	490
C 30-10	490
C 30-13	490
C 4 LDR-270-10	492
C 4 LDR-350-13	492
C 4-08	490
C 4-10	490
C 4-13	490
C 5 LDR-270-10	492
C 5-08	490
C 5-10	490
C 5-13	490
C 7 LDR-270-10	492
C 7 LDR-350-13	492</

INDEX

C302418	264	CHFX.003.150	181	CHTX.004.034	174	CM07C0000.24/DC	257	CPA.1.005.BL.100080	430
C302423	239	CHFX.003.200	181	CHTX.004.044	174	CN-0010	257	CPA.1.007.BL.060040	430
C302449	246	CHFX.004.040	181	CHTX.004.054	174	CN-0045	258	CPA.1.007.BL.080060	430
C302450	246	CHFX.004.050	181	CHTX.004.064	174	CN-2000	254	CPA.1.007.BL.100080	430
C302661	275	CHFX.004.065	181	CHTX.005.002	175	CN-2000	255	CPA.1.010.BL.060040	430
C302668	239	CHFX.004.080	181	CHTX.005.012	175	CN-2001	254	CPA.1.010.BL.080060	430
C302671	276	CHFX.004.100	181	CHTX.005.034	175	CN-2001	255	CPA.1.010.BL.100080	430
C302681	275	CHFX.004.125	181	CHTX.005.038	175	CN-2030	254	CPA.1.020.BL.060040	430
C302691	276	CHFX.004.150	181	CHTX.005.044	175	CN-2030	255	CPA.1.020.BL.080060	430
C302850	265	CHFX.004.200	181	CHTX.005.054	175	CN-2031	254	CPA.1.020.BL.100080	430
C302854	265	CHFX.005.040	183	CHTX.005.064	175	CN-2031	255	CPU.1.004.BL.060040	430
C304065LT	265	CHFX.005.050	183	CHTX.006.002	175	CN-2100	254	CPU.1.004.BL.080050	430
C304392	262	CHFX.005.065	183	CHTX.006.012	175	CN-2100	255	CPU.1.004.BL.100065	430
C304393	262	CHFX.005.080	183	CHTX.006.034	175	CN-2100	256	CPU.1.008.BL.060040	430
C306807	262	CHFX.005.100	183	CHTX.006.038	175	CN-2130	254	CPU.1.008.BL.080050	430
C314495	275	CHFX.005.125	183	CHTX.006.044	175	CN-2130	255	CPU.1.008.BL.100065	430
C314496	276	CHFX.005.150	183	CHTX.006.054	175	CN-2130	256	CX08C0000.230/50	258
C314550	275	CHFX.005.200	183	CHTX.006.064	175	CO02C0000.230/50	258	CX08C0000.24/DC	257
C314551	276	CHFX.005.250	183	CHTX.007.012	174	CO02C0000.24/DC	257	CX09C0000.230/50	258
C34BA400-X	333	CHFX.005.300	183	CHTX.007.034	174	CO03C0000.230/50	258	CX09C0000.24/DC	257
C34BB400-X	333	CHFX.006.015	181	CHTX.007.044	174	CO03C0000.24/DC	257	CX10C0000.230/50	258
C34BB500-X	334	CHFX.006.020	181	CHTX.008.002	175	CO04C0000.230/50	258	CX10C0000.24/DC	257
C34BB600-X	333	CHFX.006.025	181	CHTX.008.012	175	CO04C0000.24/DC	257	CX11C0000.230/50	258
C34BB700-X	333	CHFX.006.032	181	CHTX.008.014	175	CON.01.BK.0300.024	277	CX11C0000.24/DC	257
CC 10-2	517	CHFX.006.040	181	CHTX.008.034	175	CON.01.BK.0300.024	288	CX12C0000.230/50	258
CC 2-2	517	CHFX.006.050	181	CHTX.008.038	175	CON.01.BK.0300.024	321	CX12C0000.24/DC	257
CC 20-2	517	CHFX.006.065	181	CHTX.008.044	175	CON.01.BK.0300.024	336	CX13C0000.230/50	258
CC 30-2	517	CHFX.006.080	181	CHTX.008.054	175	CON.01.BK.0300.024	342	CX13C0000.24/DC	257
CC 4-2	517	CHFX.006.100	181	CHTX.008.064	175	CON.01.BK.0300.024	380	CX15C0000.230/50	258
CC 5-2	517	CHFX.006.125	181	CHTX.009.002	176	CON.01.BK.0300.024	402	CX15C0000.24/DC	257
CC 60-2	517	CHFX.006.150	181	CHTX.009.003	176	CON.01.BK.0300.110	277		
CHAX.001.002	184	CHFX.006.200	181	CHTX.009.022	176	CON.01.BK.0300.110	288		
CHAX.001.003	184	CHFX.006.250	181	CHTX.009.044	176	CON.01.BK.0300.110	321		
CHAX.001.004	184	CHFX.006.300	181	CHTX.009.054	176	CON.01.BK.0300.110	336		
CHAX.001.012	184	CHFX.007.015	182	CHTX.009.064	176	CON.01.BK.0300.110	342		
CHAX.001.022	184	CHFX.007.020	182	CHTX.010.002	176	CON.01.BK.0300.110	380		
CHAX.001.034	184	CHFX.007.025	182	CHTX.010.054	176	CON.01.BK.0300.110	402		
CHAX.001.038	184	CHFX.007.032	182	CHTX.010.064	176	CON.01.BK.0300.230	277		
CHAX.001.044	184	CHFX.007.040	182	CHWX.002.040	178	CON.01.BK.0300.230	288		
CHAX.001.054	184	CHFX.007.050	182	CHWX.002.050	178	CON.01.BK.0300.230	321		
CHAX.001.064	184	CHFX.007.065	182	CHWX.002.065	178	CON.01.BK.0300.230	336		
CHAX.002.002	184	CHFX.007.080	182	CHWX.002.080	178	CON.01.BK.0300.230	342		
CHAX.002.003	184	CHFX.007.100	182	CHWX.002.100	178	CON.01.BK.0300.230	380		
CHAX.002.004	184	CHFX.007.125	182	CHWX.002.125	178	CON.01.BK.0300.230	402		
CHAX.002.012	184	CHFX.007.150	182	CHWX.002.150	178	CON.02.BK.0300.024	277		
CHAX.002.022	184	CHFX.007.200	182	CHWX.002.200	178	CON.02.BK.0300.024	288		
CHAX.002.034	184	CHFX.007.250	182	CHWX.002.250	178	CON.02.BK.0300.024	321		
CHAX.002.044	184	CHFX.008.065	182	CHWX.002.300	178	CON.02.BK.0300.024	327		
CHAX.002.054	184	CHFX.008.080	182	CHWX.003.040	178	CON.02.BK.0300.024	336		
CHAX.002.064	184	CHFX.008.100	182	CHWX.003.050	178	CON.02.BK.0300.024	341		
CHAX.003.050	184	CHFX.008.125	182	CHWX.003.065	178	CON.02.BK.0300.024	352		
CHAX.003.065	184	CHFX.008.150	182	CHWX.003.080	178	CON.02.BK.0300.024	402		
CHAX.003.080	184	CHFX.008.200	182	CHWX.003.100	178	CON.02.BK.0300.110	277		
CHAX.003.100	184	CHSX.001.008	177	CHWX.003.125	178	CON.02.BK.0300.110	288		
CHAX.003.125	184	CHSX.001.010	177	CHWX.003.150	178	CON.02.BK.0300.110	321		
CHAX.003.150	184	CHSX.001.015	177	CHWX.003.200	178	CON.02.BK.0300.110	327		
CHAX.003.200/10	184	CHSX.001.020	177	CHWX.003.250	178	CON.02.BK.0300.110	336		
CHAX.003.200/16	184	CHSX.001.025	177	CHWX.003.300	178	CON.02.BK.0300.110	341		
CHAX.003.250/10	184	CHSX.001.032	177	CHWX.003.350	178	CON.02.BK.0300.110	352		
CHAX.003.250/16	184	CHSX.001.040	177	CHWX.003.400	178	CON.02.BK.0300.110	402		
CHAX.003.300/10	184	CHSX.001.050	177	CHWX.003.450	178	CON.02.BK.0300.230	277		
CHAX.003.300/16	184	CHSX.001.065	177	CHWX.003.500	178	CON.02.BK.0300.230	288		
CHAX.004.050	184	CHSX.001.080	177	CHWX.003.600	178	CON.02.BK.0300.230	321		
CHAX.004.065	184	CHSX.001.100	177	CHWX.005.050	179	CON.02.BK.0300.230	327		
CHAX.004.080	184	CHSX.002.010	177	CHWX.005.065	179	CON.02.BK.0300.230	336		
CHAX.004.100	184	CHSX.002.015	177	CHWX.005.080	179	CON.02.BK.0300.230	341		
CHAX.004.125	184	CHSX.002.020	177	CHWX.005.100	179	CON.02.BK.0300.230	352		
CHAX.004.150	184	CHSX.002.025	177	CHWX.005.125	179	CON.02.BK.0300.230	402		
CHAX.004.200/10	184	CHSX.002.032	177	CHWX.005.150	179	COPM.011.01	485		
CHAX.004.200/16	184	CHSX.002.040	177	CHWX.005.200	179	COPM.011.02	485		
CHAX.004.250/10	184	CHSX.002.050	177	CHWX.005.250	179	COPM.011.03	485		
CHAX.004.250/16	184	CHTX.001.002	173	CHWX.005.300	179	COPM.011.04	485		
CHAX.004.300/10	184	CHTX.001.003	173	CHWX.006.050	179	COPM.011.05	485		
CHAX.004.300/16	184	CHTX.001.004	173	CHWX.006.065	179	COPM.011.06	485		
CHBX.001.008	177	CHTX.001.012	173	CHWX.006.080	179	COPM.011.07	485		
CHBX.001.010	177	CHTX.001.022	173	CHWX.006.100	179	COPM.012.01	485		
CHBX.001.015	177	CHTX.001.034	173	CHWX.006.125	179	COPM.012.02	485		
CHBX.001.020	177	CHTX.001.038	173	CHWX.006.150	179	COPM.012.03	485		
CHBX.001.025	177	CHTX.001.044	173	CHWX.006.200	179	COPM.012.04	485		
CHBX.001.032	177	CHTX.001.054	173	CHWX.006.250	179	COPM.012.05	485		
CHBX.001.040	177	CHTX.001.064	173	CHWX.006.300	179	COPM.013.01	486		
CHBX.001.050	177	CHTX.002.002	173	CHWX.007.015	178	COPM.013.02	486		
CHBX.001.065	177	CHTX.002.003	173	CHWX.007.020	178	COPM.014.01	486		
CHBX.001.080	177	CHTX.002.004	173	CHWX.007.025	178	COPM.014.02	486		
CHBX.001.100	177	CHTX.002.012	173	CHWX.007.032	178	COPM.015.01	487		
CHFX.001.050	180	CHTX.002.014	173	CHWX.007.040	178	COPM.015.02	487		
CHFX.001.065	180	CHTX.002.022	173	CHWX.007.050	178	COPM.015.03	487		
CHFX.001.080	180	CHTX.002.034	173	CHWX.007.065	178	COPM.015.04	487		
CHFX.001.100	180	CHTX.002.038	173	CHWX.007.080	178	COPM.015.05	487		
CHFX.001.125	180	CHTX.002.044	173	CHWX.007.100	178	COPM.015.06	487		
CHFX.001.150	180	CHTX.002.054	173	CHWX.007.125	178	COPM.016.01	487		
CHFX.001.200	180	CHTX.002.064	173	CHWX.007.150	178	COPM.016.02	487		
CHFX.001.250	180	CHTX.003.002	174	CHWX.007.200	178	COPM.016.03	487		
CHFX.002.050	180	CHTX.003.003	174	CHWX.008.040	179	COPM.016.04	487		
CHFX.002.065	180	CHTX.003.004	174	CHWX.008.050	179	COPM.017.01	488		
CHFX.002.080	180	CHTX.003.012	174	CHWX.008.065	179	COPM.017.02	488		
CHFX.002.100	180	CHTX.003.014	174	CHWX.008.080	179	COPM.017.03	488		
CHFX.002.125	180	CHTX.003.022	174	CHWX.008.100	179	COPM.017.04	488		
CHFX.002.150	180	CHTX.003.034	174	CHWX.008.125	179	COPM.017.05	488		
CHFX.002.200	180	CHTX.003.038	174	CHWX.008.150	179	COPS.011.01	484		
CHFX.002.250	180	CHTX.003.044	174	CHWX.008.200	179	COPS.011.02	484		
CHFX.002.300	180	CHTX.003.054	174	CHWX.008.250	179	COPS.011.03	484		
CHFX.003.040	181	CHTX.003.064	174	CHWX.008.300	179	COPS.011.04	484		
CHFX.003.050	181	CHTX.004.002	174	CM05C0000.230/50	258	CPA.1.002.BL.060040	430		
CHFX.003.065	181	CHTX.004.003	174	CM05C0000.24/DC	257	CPA.1.002.BL.080060	430		
CHFX.003.080	181	CHTX.004.004	174	CM06C0000.230/50	258	CPA.1.002.BL.100080	430		
CHFX.003.100	181	CHTX.004.012	174	CM06C0000.24/DC	257	CPA.1.005.BL.060040	430		
CHFX.003.125	181	CHTX.004.022	174	CM07C0000.230/50	258	CPA.1.005.BL.080060	430		

D

DC16MM7.1	289
DC16MU7.1	289
DC24MM7.2	289
DC24MU7.2	289
DC32MM7.2	289
DC32MU7.2	289
DC8MM7.1	28

INDEX

F 190	498	FAAL.003.02	464	FASS.001.64	463	FAYB.006.04	465	FEYB.002.14	462
F 190 A	501	FAAL.003.03	464	FASS.002.02	463	FAYB.006.12	465	FEYB.002.34	462
F 190 M	500	FAAL.003.04	464	FASS.002.03	463	FAYB.006.22	465	FEYB.002.38	462
F 190 P	494	FAAL.003.12	464	FASS.002.04	463	FAYB.006.34	465	FEYB.002.44	462
F 190 P	499	FAAL.003.22	464	FASS.002.12	463	FAYB.006.44	465	FEYB.002.54	462
F 2230 F	498	FAAL.003.34	464	FASS.002.22	463	FAYB.006.54	465	FEYB.003.12	462
F 2230 FA	501	FAAL.003.44	464	FASS.002.34	463	FAYB.006.64	465	FEYB.003.14	462
F 2230 FM	500	FAAL.003.54	464	FASS.002.44	463	FAYB.007.02	465	FEYB.003.34	462
F 2230 FP	499	FAAL.003.64	464	FASS.002.54	463	FAYB.007.12	465	FEYB.003.38	462
F 260 A	501	FAAL.004.02	464	FASS.002.64	463	FAYB.007.34	465	FEYB.003.44	462
F 260	498	FAAL.004.03	464	FASS.003.02	464	FAYB.007.44	465	FEYB.003.54	462
F 260 M	500	FAAL.004.04	464	FASS.003.03	464	FAYB.007.54	465	FEYB.004.01	462
F 260 P	499	FAAL.004.12	464	FASS.003.04	464	FAYB.007.64	465	FHNB.001.1209	468
F 36	498	FAAL.004.22	464	FASS.003.12	464	FAYB.008.02	465	FHNB.001.1213	468
F 36 A	501	FAAL.004.34	464	FASS.003.22	464	FAYB.008.12	465	FHNB.001.1216	468
F 36 M	500	FAAL.004.44	464	FASS.003.34	464	FAYB.008.34	465	FHNB.001.1219	468
F 36 P	494	FAAL.004.54	464	FASS.003.44	464	FAYB.008.44	465	FHNB.001.1404	468
F 36 P	499	FAAL.004.64	464	FASS.003.54	464	FAYB.008.54	465	FHNB.001.1406	468
F 3720 F	498	FAAL.005.02	464	FASS.003.64	464	FAYB.008.64	465	FHNB.001.1410	468
F 3720 FA	501	FAAL.005.03	464	FASS.004.02	464	FB16MM1.6+PL-A	290	FHNB.001.1413	468
F 3720 FM	500	FAAL.005.04	464	FASS.004.03	464	FB16MU1.6+PL-A	290	FHNB.001.1804	468
F 3720 FP	499	FAAL.005.12	464	FASS.004.04	464	FB8MM1.5+PL-A	290	FHNB.001.1806	468
F 375 F	498	FAAL.005.22	464	FASS.004.12	464	FB8MU1.5+PL-A	290	FHNB.001.3413	468
F 375 FA	501	FAAL.005.34	464	FASS.004.22	464	FCSS.001.0606	456	FHNB.001.3416	468
F 375 FM	500	FAAL.005.44	464	FASS.004.34	464	FCSS.001.0808	456	FHNB.001.3419	468
F 375 FP	499	FAAL.005.54	464	FASS.004.44	464	FCSS.001.1010	456	FHNB.001.3425	468
F 380	498	FAAL.005.64	464	FASS.004.54	464	FCSS.001.1212	456	FHNB.001.3813	468
F 380 A	501	FAAL.006.02	465	FASS.004.64	464	FCSS.002.0606	456	FHNB.001.4419	468
F 380 M	500	FAAL.006.03	465	FASS.005.02	464	FCSS.002.0808	456	FHNB.001.4425	468
F 380 P	494	FAAL.006.04	465	FASS.005.03	464	FCSS.002.1010	456	FHNB.001.4432	468
F 380 P	499	FAAL.006.12	465	FASS.005.04	464	FCSS.002.1212	456	FHPP.001.0250	469
F 5210 F	498	FAAL.006.22	465	FASS.005.12	464	FCSS.003.1012	456	FHPP.001.0376	469
F 5210 FA	501	FAAL.006.34	465	FASS.005.22	464	FCSS.003.1014	456	FHPP.001.1204	468
F 5210 FM	500	FAAL.006.44	465	FASS.005.34	464	FCSS.003.1038	456	FHPP.001.1206	468
F 5210 FP	499	FAAL.006.54	465	FASS.005.44	464	FCSS.003.1212	456	FHPP.001.1208	468
F 6	498	FAAL.006.64	465	FASS.005.54	464	FCSS.003.1214	456	FHPP.001.1210	468
F 6 A	501	FAAL.007.02	465	FASS.005.64	464	FCSS.003.1238	456	FHPP.001.1212	468
F 6 M	500	FAAL.007.12	465	FASS.006.02	465	FCSS.004.0614	456	FHPP.001.1213	468
F 6 P	499	FAAL.007.34	465	FASS.006.03	465	FCSS.004.0814	456	FHPP.001.1404	468
F 65	498	FAAL.007.44	465	FASS.006.04	465	FCSS.004.1012	456	FHPP.001.1406	468
F 65 A	501	FAAL.007.54	465	FASS.006.12	465	FCSS.004.1014	456	FHPP.001.1408	468
F 65 M	500	FAAL.007.64	465	FASS.006.22	465	FCSS.004.1038	456	FHPP.001.1410	468
F 65 P	494	FAAL.008.02	465	FASS.006.34	465	FCSS.004.1212	456	FHPP.001.1412	468
F 65 P	499	FAAL.008.12	465	FASS.006.44	465	FCSS.004.1214	456	FHPP.001.1804	468
F 745 F	498	FAAL.008.34	465	FASS.006.54	465	FCSS.004.1238	456	FHPP.001.1806	468
F 745 FA	501	FAAL.008.44	465	FASS.006.64	465	FCSS.005.0614	456	FHPP.001.1808	468
F 745 FM	500	FAAL.008.54	465	FASS.007.02	465	FCSS.005.0814	456	FHPP.001.3419	468
F 745 FP	494	FAAL.008.64	465	FASS.007.12	465	FCSS.005.1012	456	FHPP.001.3804	468
F 745 FP	499	FAPP.001.02	463	FASS.007.34	465	FCSS.005.1014	456	FHPP.001.3806	468
F 9	498	FAPP.001.03	463	FASS.007.44	465	FCSS.005.1038	456	FHPP.001.3808	468
F 9 A	501	FAPP.001.04	463	FASS.007.54	465	FCSS.005.1212	456	FHPP.001.3810	468
F 9 M	500	FAPP.001.34	463	FASS.007.64	465	FCSS.005.1214	456	FHPP.001.3812	468
F 9 P	499	FAPP.001.44	463	FASS.008.02	465	FCSS.005.1238	456	FHPP.001.4425	468
F 95	498	FAPP.001.54	463	FASS.008.12	465	FCSS.006.0606	456	FHPP.001.5432	469
F 95 A	501	FAPP.001.64	463	FASS.008.34	465	FCSS.006.0808	456	FHPP.001.6438	469
F 95 M	500	FAPP.002.02	463	FASS.008.44	465	FCSS.006.1010	456	FHSS.001.0250	469
F 95 P	494	FAPP.002.03	463	FASS.008.54	465	FCSS.006.1212	456	FHSS.001.0252	469
F 95 P	499	FAPP.002.04	463	FASS.008.64	465	FCSS.007.0606	456	FHSS.001.0375	469
F17-100A	391	FAPP.002.34	463	FAXX.003.54	466	FCSS.007.0808	456	FHSS.001.0380	469
F17-600-A3HG	391	FAPP.002.44	463	FAXX.006	466	FCSS.007.1010	456	FHSS.001.04100	469
F17-800-A3HG	391	FAPP.002.54	463	FAXX.007	466	FCSS.007.1212	456	FHSS.001.1210	468
F17-A00-A3HG	391	FAPP.002.64	463	FAYB.001.02	463	FCSS.008.0606	456	FHSS.001.1213	468
F17-B00-A3HC	391	FAPP.003.02	464	FAYB.001.03	463	FCSS.008.0808	456	FHSS.001.1215	468
F18-100A	391	FAPP.003.03	464	FAYB.001.04	463	FCSS.008.1010	456	FHSS.001.1216	468
F18-B00-A3DG	391	FAPP.003.04	464	FAYB.001.12	463	FCSS.008.1212	456	FHSS.001.1219	468
F18-C00-A3DG	391	FAPP.003.34	464	FAYB.001.22	463	FEAX.001.01	462	FHSS.001.1406	468
F64G-2GN-AD3	385	FAPP.003.44	464	FAYB.001.34	463	FEAX.001.02	462	FHSS.001.1408	468
F64G-3GN-AD3	385	FAPP.003.54	464	FAYB.001.44	463	FEAX.002.1607	462	FHSS.001.1409	468
F64G-4GN-AD3	385	FAPP.003.64	464	FAYB.001.54	463	FEAX.002.1809	462	FHSS.001.1410	468
F64G-6GN-AD3	385	FAPP.004.02	464	FAYB.001.64	463	FEAX.002.2110	462	FHSS.001.1413	468
F64G-KITA40	385	FAPP.004.03	464	FAYB.002.02	463	FEAX.002.2411	462	FHSS.001.1806	468
F68G-6GN-AR3	385	FAPP.004.04	464	FAYB.002.03	463	FEAX.002.2713	462	FHSS.001.2263	469
F68G-8GN-AR3	385	FAPP.004.34	464	FAYB.002.04	463	FEAX.002.3019	462	FHSS.001.2267	469
F68G-AGN-AR3	385	FAPP.004.44	464	FAYB.002.12	463	FEAX.002.3319	462	FHSS.001.3413	468
F68G-BGN-AR3	385	FAPP.004.54	464	FAYB.002.22	463	FEAX.002.3722	462	FHSS.001.3419	468
F68G-KITA40	385	FAPP.004.64	464	FAYB.002.34	463	FEAX.002.3925	462	FHSS.001.3420	468
F901XG02AZ	495	FAPP.005.02	464	FAYB.002.44	463	FEAX.003.089101	462	FHSS.001.3808	468
F901XG02Z	495	FAPP.005.03	464	FAYB.002.54	463	FEAX.003.1722	462	FHSS.001.3809	468
F901XG04AZ	495	FAPP.005.04	464	FAYB.002.64	463	FEAX.003.2229	462	FHSS.001.3810	468
F901XG04Z	495	FAPP.005.34	464	FAYB.003.02	464	FEAX.003.2834	462	FHSS.001.3811	468
F901XG06AZ	495	FAPP.005.44	464	FAYB.003.03	464	FEAX.003.3240	462	FHSS.001.3813	468
F901XG06Z	495	FAPP.005.54	464	FAYB.003.04	464	FEAX.003.3949	462	FHSS.001.4419	468
F901XG08AZ	495	FAPP.005.64	464	FAYB.003.12	464	FEAX.003.4860	462	FHSS.001.4425	468
F901XG08Z	495	FAPP.006.02	465	FAYB.003.22	464	FEAX.003.5672	462	FHSS.001.4427	468
F901XG12AZ	495	FAPP.006.03	465	FAYB.003.34	464	FEAX.003.6076	462	FHSS.001.5432	469
F901XG12Z	495	FAPP.006.04	465	FAYB.003.44	464	FEAX.003.7794	462	FHSS.001.5433	469
F901XG16WZ	495	FAPP.006.34	465	FAYB.003.54	464	FEAX.004.1826	462	FHSS.001.6438	469
F901XG16Z	495	FAPP.006.44	465	FAYB.003.64	464	FEAX.004.2633	462	FHSS.001.6439	469
F901XG24WZ	495	FAPP.006.54	465	FAYB.004.02	464	FEAX.004.3240	462	FHSS.002.0250	469
F901XG24Z	495	FAPP.006.64	465	FAYB.004.03	464	FESS.001.16	462	FHSS.002.1206	468
FAAL.001.02	463	FAPP.007.02	465	FAYB.004.04	464	FESS.001.19	462	FHSS.002.1208	468
FAAL.001.03	463	FAPP.007.34	465	FAYB.004.12	464	FESS.001.25	462	FHSS.002.1209	468
FAAL.001.04	463	FAPP.007.44	465	FAYB.004.22	464	FESS.002.12	462	FHSS.002.1210	468
FAAL.001.12	463	FAPP.007.54	465	FAYB.004.34	464	FESS.002.34	462	FHSS.002.1213	468
FAAL.001.22	463	FAPP.007.64	465	FAYB.004.44	464	FESS.002.44	462	FHSS.002.1216	468
FAAL.001.34	463	FAPP.008.02	465	FAYB.004.54	464	FESS.003.12	462	FHSS.002.1219	468
FAAL.001.44	463	FAPP.008.34	465	FAYB.004.64	464	FESS.003.34	462	FHSS.002.1404	468
FAAL.001.54	463	FAPP.008.44	465	FAYB.005.02	464	FESS.003.44	462	FHSS.002.1406	468
FAAL.001.64	463	FAPP.008.54	465	FAYB.005.03	464	FESS.004.01	462	FHSS.002.1408	468
FAAL.002.02	463	FAPP.008.64	465	FAYB.005.04	464	FEYB.001.07	462	FHSS.002.1409	468
FAAL.002.03	463	FASS.001.02	463	FAYB.005.12	464	FEYB.001.09	462	FHSS.002.1410	468
FAAL.002.04	463	FASS.001.03	463	FAYB.005.22	464	FEYB.001.11	462	FHSS.002.1413	468
FAAL.002.12	463	FASS.001.04	463	FAYB.005.34	464	FEYB.001.13	462	FHSS.002.1804	468
FAAL.002.22	463	FASS.001.12	463	FAYB.005.44	464	FEYB.001.16	462	FHSS.002.1806	468
FAAL.002.34	463	FASS.001.22	463	FAYB.005.54	464	FEYB.001.19	462	FHSS.002.1808	468
FAAL.002.44	463	FASS.001.34	463	FAYB.005.64	464	FEYB.001.22	462	FHSS.002.1809	468
FAAL.002.54	463	FASS.001.44	463	FAYB.006.02	465	FEYB.001.25	462	FHSS.002.3413	468
FAAL.002.64	463	FASS.001.54	463	FAYB.006.03	465	FEYB.002			

FHSS.002.3419	468	FISS.004.0418	443	FISS.015.0814	445	FLFM.001.050	170	FPYB.021.2112	467
FHSS.002.3425	468	FISS.004.04M5	443	FISS.015.0818	445	FLFM.001.065	170	FPYB.021.2834	467
FHSS.002.3804	468	FISS.004.0614	443	FISS.015.1014	445	FLFM.001.080	170	FPYB.021.3444	467
FHSS.002.3806	468	FISS.004.0618	443	FISS.015.1038	445	FLFM.001.100	170	FPYB.022.2112	467
FHSS.002.3808	468	FISS.004.06M5	443	FISS.015.1214	445	FLFM.001.125	170	FPYB.022.2834	467
FHSS.002.3809	468	FISS.004.0814	443	FISS.015.1238	445	FLFM.001.150	170	FPYB.022.3444	467
FHSS.002.3810	468	FISS.004.0818	443	FISS.016.0414	446	FLFM.001.200	170	FPYB.023.1212	467
FHSS.002.3813	468	FISS.004.0838	443	FISS.016.0418	446	FLFM.001.250	170	FPYB.023.3434	467
FHSS.002.4419	468	FISS.004.1014	443	FISS.016.0614	446	FLFM.001.300	170	FPYB.023.4444	467
FHSS.002.4425	468	FISS.004.1038	443	FISS.016.0618	446	FLFM.002.003	171	FPYB.024.1221	467
FHSS.002.4432	468	FISS.004.1212	443	FISS.016.0814	446	FLFM.002.004	171	FPYB.024.3434	467
FHSS.002.5432	469	FISS.004.1214	443	FISS.016.0818	446	FLPA.001.1616	506	FPYB.024.4444	467
FHSS.002.5438	469	FISS.004.1238	443	FISS.016.1014	446	FLPA.001.2020	506	FQNB.01.001.12	458
FHSS.002.6432	469	FISS.004.1412	443	FISS.016.1038	446	FLPA.001.2525	506	FQNB.01.001.14	458
FHSS.002.6438	469	FISS.005.0414	444	FISS.017.0418	446	FLPA.001.3232	506	FQNB.01.001.38	458
FHSS.002.6450	469	FISS.005.0418	444	FISS.017.04M5	446	FLPA.001.4040	506	FQNB.01.002.12	458
FHYB.001.0250	469	FISS.005.0614	444	FISS.017.0614	446	FLPA.001.5050	506	FQNB.01.002.14	458
FHYB.001.0376	469	FISS.005.0618	444	FISS.017.0618	446	FLPA.002.1616	506	FQNB.01.002.38	458
FHYB.001.1206	468	FISS.005.0814	444	FISS.017.0814	446	FLPA.002.2020	506	FQNS.01.001.12	459
FHYB.001.1209	468	FISS.005.0818	444	FISS.017.0818	446	FLPA.002.2525	506	FQNS.01.001.14	459
FHYB.001.1210	468	FISS.005.0838	444	FISS.018.0418	446	FLPA.002.3232	506	FQNS.01.001.38	459
FHYB.001.1213	468	FISS.005.1014	444	FISS.018.0614	446	FLPA.002.4040	506	FQNS.01.002.12	459
FHYB.001.1215	468	FISS.005.1038	444	FISS.018.0618	446	FLPA.002.5050	506	FQNS.01.002.14	459
FHYB.001.1219	468	FISS.005.1212	444	FISS.018.0814	446	FLPA.003.1616	506	FQNS.01.002.38	459
FHYB.001.1220	468	FISS.005.1214	444	FISS.018.0818	446	FLPA.003.2020	506	FTGS.001.1212	510
FHYB.001.1404	468	FISS.005.1238	444	FISS.018.1014	446	FLPA.003.2525	506	FTGS.001.1212	511
FHYB.001.1406	468	FISS.006.0414	444	FISS.018.1038	446	FLPA.003.3232	506	FTNB.009.3434	453
FHYB.001.1408	468	FISS.006.0418	444	FISS.019.0418	446	FLPA.003.4040	506	FTSS.001.0202	470
FHYB.001.1409	468	FISS.006.04M5	444	FISS.019.04M5	446	FLPA.003.5050	506	FTSS.001.0303	470
FHYB.001.1410	468	FISS.006.0614	444	FISS.019.0614	446	FLPA.004.2020	506	FTSS.001.0404	470
FHYB.001.1413	468	FISS.006.0618	444	FISS.019.0618	446	FLPA.004.2525	506	FTSS.001.1212	470
FHYB.001.1804	468	FISS.006.0814	444	FISS.019.0814	446	FLPA.004.3232	506	FTSS.001.1414	470
FHYB.001.1806	468	FISS.006.0818	444	FISS.019.0818	446	FLPA.004.4040	506	FTSS.001.1818	470
FHYB.001.1808	468	FISS.006.0838	444	FISS.020.0404	446	FLPA.004.5050	506	FTSS.001.2222	470
FHYB.001.1809	468	FISS.006.1014	444	FISS.020.0606	446	FLPA.005.1616	506	FTSS.001.3434	470
FHYB.001.2263	469	FISS.006.1038	444	FISS.020.0808	446	FLPA.005.2020	506	FTSS.001.3838	470
FHYB.001.3413	468	FISS.006.1212	444	FISS.020.1010	446	FLPA.005.2525	506	FTSS.001.4444	470
FHYB.001.3416	468	FISS.006.1214	444	FISS.021.0404	446	FLPA.005.3232	506	FTSS.001.5454	470
FHYB.001.3419	468	FISS.006.1238	444	FISS.021.0606	446	FLPA.005.4040	506	FTSS.001.6464	470
FHYB.001.3420	468	FISS.007.0414	444	FISS.021.0808	446	FLPA.005.5050	506	FTSS.002.0202	470
FHYB.001.3425	468	FISS.007.0418	444	FISS.021.1010	446	FLPA.006.1612	506	FTSS.002.0303	470
FHYB.001.3804	468	FISS.007.0614	444	FISS.022.0404	446	FLPA.006.2012	506	FTSS.002.0404	470
FHYB.001.3806	468	FISS.007.0618	444	FISS.022.0606	446	FLPA.006.2034	506	FTSS.002.1212	470
FHYB.001.3809	468	FISS.007.0814	444	FISS.022.0808	446	FLPA.006.2512	506	FTSS.002.1414	470
FHYB.001.3813	468	FISS.007.0818	444	FISS.022.1010	446	FLPA.006.2534	506	FTSS.002.1818	470
FHYB.001.4419	468	FISS.007.0838	444	FITE.001.1414	441	FLPA.006.2544	506	FTSS.002.2222	470
FHYB.001.4420	468	FISS.007.1014	444	FITE.001.1616	441	FLPA.006.3244	506	FTSS.002.3434	470
FHYB.001.4425	468	FISS.007.1038	444	FITE.002.1414	441	FLPA.006.3254	506	FTSS.002.3838	470
FHYB.001.4427	468	FISS.007.1212	444	FITE.002.1616	441	FLPA.006.4044	506	FTSS.002.4444	470
FHYB.001.4432	468	FISS.007.1214	444	FITE.003.1414	441	FLPA.006.4054	506	FTSS.002.5454	470
FHYB.001.5432	469	FISS.007.1238	444	FITE.003.1616	441	FLPA.006.4064	506	FTSS.002.6464	470
FHYB.001.5438	469	FISS.008.0414	444	FITE.005.0812	441	FLPA.006.5002	506	FTSS.003.0202	470
FHYB.001.6432	469	FISS.008.0418	444	FITE.005.1412	441	FLPA.006.5064	506	FTSS.003.1212	470
FHYB.001.6438	469	FISS.008.0614	444	FITE.005.1438	441	FLPA.009.2520	507	FTSS.003.1414	470
FHYB.001.6450	469	FISS.008.0618	444	FITE.005.1612	441	FLPA.009.3225	507	FTSS.003.2222	470
FINB.001.0812	438	FISS.008.0814	444	FITE.005.1638	441	FLPA.009.4025	507	FTSS.003.3434	470
FINB.001.1612	438	FISS.008.0818	444	FITE.007.1412	442	FLPA.009.4032	507	FTSS.003.3838	470
FINB.001.1638	438	FISS.008.0838	444	FITE.007.1438	442	FLPA.009.5040	507	FTSS.003.4444	470
FINB.004.0608	439	FISS.008.1014	444	FITE.007.1612	442	FLPA.010.2016	507	FTSS.003.5454	470
FINB.004.1612	439	FISS.008.1038	444	FITE.007.1638	442	FLPA.010.2516	507	FTSS.003.6464	470
FINB.004.1614	439	FISS.008.1212	444	FITE.008.1616	442	FLPA.010.2520	507	FTSS.004.0202	470
FINB.021.0402	448	FISS.008.1214	444	FLAX.001.001	170	FLPA.010.3220	507	FTSS.004.0303	470
FINB.022.0402	448	FISS.008.1238	444	FLAX.001.002	170	FLPA.010.3225	507	FTSS.004.0404	470
FINB.023.0402	448	FISS.009.04M11	444	FLAX.002.001	171	FLPA.010.4025	507	FTSS.004.1212	470
FINB.024.0402	449	FISS.009.06M13	444	FLAX.002.002	171	FLPA.010.4032	507	FTSS.004.1414	470
FINB.025.0402	449	FISS.009.08M16	444	FLAX.002.003	171	FLPA.010.5032	507	FTSS.004.1818	470
FISS.001.0414	443	FISS.009.10M18	444	FLAX.002.004	171	FLPA.010.5040	507	FTSS.004.2222	470
FISS.001.0418	443	FISS.009.12M22	444	FLAX.002.005	171	FLPA.011.2012	507	FTSS.004.3434	470
FISS.001.0614	443	FISS.010.0404	444	FLAX.002.006	171	FLPA.011.2512	507	FTSS.004.3838	470
FISS.001.0618	443	FISS.010.0606	444	FLCT.001.012.01	553	FLPA.012.2012	507	FTSS.004.4444	470
FISS.001.0814	443	FISS.010.0808	444	FLCT.001.012.02	553	FLPA.012.2534	507	FTSS.004.5454	470
FISS.001.0818	443	FISS.010.1010	444	FLCT.001.012.03	553	FLPA.012.2544	507	FTSS.004.6464	470
FISS.001.0838	443	FISS.010.1212	444	FLCT.001.044.04	553	FLPA.012.3254	507	FTSS.005.0202	470
FISS.001.1014	443	FISS.010.1414	444	FLCT.001.044.05	553	FLPA.012.4064	507	FTSS.005.0303	470
FISS.001.1038	443	FISS.011.0404	445	FLCT.001.044.06	553	FLPA.012.5002	507	FTSS.005.0404	470
FISS.001.1212	443	FISS.011.0606	445	FLCT.001.044.07	553	FLPA.013.3232	506	FTSS.005.1212	470
FISS.001.1214	443	FISS.011.0808	445	FLCT.001.044.08	553	FLPA.013.4040	506	FTSS.005.1414	470
FISS.001.1238	443	FISS.011.1010	445	FLCT.001.044.09	553	FLPA.013.5050	506	FTSS.005.1818	470
FISS.001.1412	443	FISS.011.1212	445	FLCT.001.044.10	553	FLPA.014.2012	506	FTSS.005.2222	470
FISS.002.0414	443	FISS.011.1414	445	FLCT.001.044.11	553	FLPA.014.2512	506	FTSS.005.3434	470
FISS.002.0418	443	FISS.012.0404	445	FLCT.002.012.01	553	FLPA.014.2534	506	FTSS.005.3838	470
FISS.002.04M5	443	FISS.012.0606	445	FLCT.002.012.02	553	FLTM.001.002	170	FTSS.005.4444	470
FISS.002.0614	443	FISS.012.0808	445	FLCT.002.012.03	553	FLTM.001.012	170	FTSS.005.5454	470
FISS.002.0618	443	FISS.012.1010	445	FLCT.002.044.07	553	FLTM.001.034	170	FTSS.005.6464	470
FISS.002.06M5	443	FISS.012.1212	445	FLCT.002.044.08	553	FLTM.001.044	170	FTSS.006.0202	471
FISS.002.0814	443	FISS.012.1414	445	FLCT.002.044.09	553	FLTM.001.064	170	FTSS.006.0303	471
FISS.002.0818	443	FISS.013.0604	445	FLCT.002.044.10	553	FLTM.002.002	171	FTSS.006.0404	471
FISS.002.0838	443	FISS.013.0804	445	FLCT.003.012.01	553	FLTM.002.012	171	FTSS.006.1212	471
FISS.002.1014	443	FISS.013.0806	445	FLCT.003.012.02	553	FLTM.002.022	171	FTSS.006.1414	471
FISS.002.1038	443	FISS.013.1006	445	FLCT.003.012.03	553	FLTM.002.034	171	FTSS.006.2222	471
FISS.002.1212	443	FISS.013.1008	445	FLCT.003.044.04	553	FLTM.002.038	171	FTSS.006.3434	471
FISS.002.1214	443	FISS.013.1208	445	FLCT.003.044.05	553	FLTM.002.044	171	FTSS.006.3838	471
FISS.002.1238	443	FISS.013.1210	445	FLCT.003.044.06	553	FLTM.002.054	171	FTSS.006.4444	471
FISS.002.1412	443	FISS.013.1412	445	FLCT.003.044.07	553	FLTM.002.064	171	FTSS.006.5454	471
FISS.003.0414	443	FISS.014.0414	445	FLCT.003.044.08	553	FPYB.001.2012	467	FTSS.006.6464	471
FISS.003.0418	443	FISS.014.0418	445	FLCT.003.044.09	553	FPYB.001.2512	467	FTSS.007.0202	471
FISS.003.0614	443	FISS.014.0614	445	FLCT.003.044.10	553	FPYB.001.2534	467	FTSS.007.1212	471
FISS.003.0618	443	FISS.014.0618	445	FLCT.003.044.11	553	FPYB.001.3244	467	FTSS.007.1414	471
FISS.00									

INDEX

FTSS.008.1238	471	FTSS.016.4444	472	G651AFNP2HA000N	368	G652AR003GA00H0	370	GAFM.014.300	105
FTSS.008.1418	471	FTSS.016.5454	472	G651AL0P10A0000	376	G652AR004GA00D0	370	GAFM.014.350	105
FTSS.008.2202	471	FTSS.016.6464	472	G651AL0P20A0000	376	G652AR004GA00H0	370	GAFM.014.400	105
FTSS.008.3412	471	FTSS.017.0202	472	G651APBP1GA00DA	372	G652AW002GA00D0	370	GAFM.014.500	105
FTSS.008.3814	471	FTSS.017.0303	472	G651APBP1GA00DN	372	G652AW002GA00H0	370	GAFM.014.600	105
FTSS.008.4412	471	FTSS.017.1212	472	G651APBP1GA00HA	372	G652AW003GA00D0	370	GAFM.015.065	105
FTSS.008.4434	471	FTSS.017.1414	472	G651APBP1GA00HN	372	G652AW003GA00H0	370	GAFM.015.080	105
FTSS.008.5444	471	FTSS.017.1818	472	G651APBP2GA00DA	372	G652AW004GA00D0	370	GAFM.015.100	105
FTSS.008.6444	471	FTSS.017.2222	472	G651APBP2GA00DN	372	G652AW004GA00H0	370	GAFM.015.125	105
FTSS.008.6454	471	FTSS.017.3434	472	G651APBP2GA00HA	372	G653A2M05GA0000	378	GAFM.015.150	105
FTSS.009.0244	471	FTSS.017.3838	472	G651APBP2GA00HN	372	G653A2M06GA0000	378	GAFM.015.200	105
FTSS.009.0254	471	FTSS.017.4444	472	G651APJP1GA00DA	372	G653A3M05GA0000	378	GAFM.015.250	105
FTSS.009.0264	471	FTSS.017.5454	472	G651APJP1GA00DN	372	G653A3M06GA0000	378	GAFM.015.300	105
FTSS.009.0322	471	FTSS.017.6464	472	G651APJP1GA00HA	372	G653A4S95GA0000	379	GAFM.015.350	105
FTSS.009.1214	471	FTSS.018.0202	472	G651APJP1GA00HN	372	G653A4S96GA0000	379	GAFM.015.400	105
FTSS.009.1238	471	FTSS.018.0303	472	G651APJP2GA00DA	372	G653A5S95GA0000	379	GAFM.015.500	105
FTSS.009.1418	471	FTSS.018.1212	472	G651APJP2GA00DN	372	G653A5S96GA0000	379	GAFM.016.015	106
FTSS.009.2202	471	FTSS.018.1414	472	G651APJP2GA00HA	372	G653A6S95GA0000	379	GAFM.016.020	106
FTSS.009.2264	471	FTSS.018.1818	472	G651APJP2GA00HN	372	G653A6S96GA0000	379	GAFM.016.025	106
FTSS.009.3412	471	FTSS.018.2222	472	G651AR001GA00D0	370	G653AAFPSJA0000	369	GAFM.016.032	106
FTSS.009.3438	471	FTSS.018.3434	472	G651AR001GA00H0	370	G653AAFPSJA000A	367	GAFM.016.040	106
FTSS.009.3814	471	FTSS.018.3838	472	G651AR002GA00D0	370	G653ABBP5JA000A	367	GAFM.016.050	106
FTSS.009.4412	471	FTSS.018.4444	472	G651AR002GA00H0	370	G653ABBP5JA000N	367	GAFM.016.065	106
FTSS.009.4434	471	FTSS.018.5454	472	G652A2M02GA0000	378	G653ABBP6JA000A	367	GAFM.016.080	106
FTSS.009.5434	471	FTSS.018.6464	472	G652A2M03GA0000	378	G653ABBP6JA000N	367	GAFM.016.100	106
FTSS.009.5444	471	FTSS.019.0264	472	G652A2M04GA0000	378	G653ABJP5JA000A	367	GAFM.016.125	106
FTSS.009.6412	471	FTSS.019.1238	472	G652A2M05GA0000	378	G653ABJP5JA000N	367	GAFM.016.150	106
FTSS.009.6444	471	FTSS.019.1418	472	G652A3M03GA0000	378	G653ABJP6JA000A	367	GAFM.016.200	106
FTSS.009.6454	471	FTSS.019.3412	472	G652A3M04GA0000	378	G653ABJP6JA000N	367	GAFM.016.250	106
FTSS.010.0254	471	FTSS.019.3814	472	G652A4S92GA0000	379	G653ACNP5GA00DA	374	GAFM.016.300	106
FTSS.010.0264	471	FTSS.019.4434	472	G652A4S93GA0000	379	G653ACNP5GA00DN	374	GAFM.016.350	106
FTSS.010.1214	471	FTSS.019.5444	472	G652A4S94GA0000	379	G653ACNP5GA00HA	374	GAFM.016.400	106
FTSS.010.1218	471	FTSS.019.6454	472	G652A5S92GA0000	379	G653ACNP5GA00HN	374	GAFM.016.500	106
FTSS.010.1238	471	FTSS.020.1212	470	G652A5S93GA0000	379	G653ACNP6GA00DA	374	GAFM.017.050	106
FTSS.010.1418	471	FTSS.020.1414	137	G652A5S94GA0000	379	G653ACNP6GA00DN	374	GAFM.017.065	106
FTSS.010.3412	471	FTSS.020.1414	470	G652A6S92GA0000	379	G653ACNP6GA00HA	374	GAFM.017.080	106
FTSS.010.3438	471	FTSS.020.1818	137	G652A6S93GA0000	379	G653ACNP6GA00HN	374	GAFM.017.100	106
FTSS.010.3814	471	FTSS.020.1818	470	G652A6S94GA0000	379	G653AD006GA0000	381	GAFM.017.150	106
FTSS.010.3818	471	FTSS.020.3838	470	G652AAFPP2JA0000	369	G653AFNP5SHA000A	368	GAFM.017.200	106
FTSS.010.4412	471			G652AAFPP3JA0000	369	G653AFNP5SHA000N	368	GAFM.017.250	106
FTSS.010.4434	471			G652AAFPP4JA0000	369	G653AFNP6SHA000A	368	GAFM.017.300	106
FTSS.010.5434	471			G652ABBP2JA000A	367	G653AFNP6SHA000N	368	GAFM.018.050	107
FTSS.010.5444	471			G652ABBP2JA000N	367	G653AHFP6JA0000	369	GAFM.018.065	107
FTSS.010.6412	471			G652ABBP3JA000A	367	G653AHNK6HA000A	368	GAFM.018.080	107
FTSS.010.6444	471			G652ABBP3JA000N	367	G653AHNK6HA000N	368	GAFM.018.100	107
FTSS.010.6454	471			G652ABBP4JA000A	367	G653AL0P50A0000	376	GAFM.018.150	107
FTSS.011.0202	471			G652ABBP4JA000N	367	G653AL0P60A0000	376	GAFM.018.200	107
FTSS.011.0303	471			G652ABJP2JA000A	367	G653APBP5GA00DA	372	GAFM.018.250	107
FTSS.011.1212	471			G652ABJP2JA000N	367	G653APBP5GA00DN	372	GAFM.018.300	107
FTSS.011.1414	471			G652ABJP3JA000A	367	G653APBP5GA00HA	372	GAFM.019.050	108
FTSS.011.1818	471			G652ABJP3JA000N	367	G653APBP5GA00HN	372	GAFM.019.065	108
FTSS.011.2222	471			G652ABJP4JA000A	367	G653APBP6GA00DA	372	GAFM.019.080	108
FTSS.011.3434	471			G652ABJP4JA000N	367	G653APBP6GA00DN	372	GAFM.019.100	108
FTSS.011.3838	471			G652ACNP2GA00DA	374	G653APBP6GA00HA	372	GAFM.019.125	108
FTSS.011.4444	471			G652ACNP2GA00DN	374	G653APBP6GA00HN	372	GAFM.019.150	108
FTSS.011.5454	471			G652ACNP2GA00HA	374	G653APJP5GA00DA	372	GAFM.019.200	108
FTSS.011.6464	471			G652ACNP2GA00HN	374	G653APJP5GA00DN	372	GAFM.019.250	108
FTSS.012.0202	472			G652ACNP3GA00DA	374	G653APJP5GA00HA	372	GAFM.019.300	108
FTSS.012.0303	472			G652ACNP3GA00DN	374	G653APJP5GA00HN	372	GAFM.020.065	108
FTSS.012.1212	472			G652ACNP3GA00HA	374	G653APJP6GA00DA	372	GAFM.020.080	108
FTSS.012.1414	137			G652ACNP3GA00HN	374	G653APJP6GA00DN	372	GAFM.020.100	108
FTSS.012.1414	146			G652ACNP4GA00DA	374	G653APJP6GA00HA	372	GAFM.020.125	108
FTSS.012.1414	137			G652ACNP4GA00DN	374	G653APJP6GA00HN	372	GAFM.020.150	108
FTSS.012.1818	146			G652ACNP4GA00HA	374	G653AR005GA00D0	370	GAFM.020.200	108
FTSS.012.1818	146			G652ACNP4GA00HN	374	G653AR005GA00H0	370	GAFM.020.250	108
FTSS.012.1818	472			G652AD004CA0000	381	G653AR006GA00D0	370	GAFM.020.300	108
FTSS.012.2222	472			G652AFNP2HA000A	368	G653AR006GA00H0	370	GAFM.021.065	109
FTSS.012.3434	472			G652AFNP2HA000N	368	GAAX.001.001	111	GAFM.021.080	109
FTSS.012.3838	472			G652AFNP3HA000A	368	GAAX.001.002	111	GAFM.021.100	109
FTSS.012.4444	472			G652AFNP3HA000N	368	GAAX.001.003	111	GAFM.021.125	109
FTSS.012.5454	472			G652AFNP4HA000A	368	GAAX.001.004	111	GAFM.021.150	109
FTSS.012.6464	472			G652AFNP4HA000N	368	GAAX.001.005	111	GAFM.021.200	109
FTSS.013.1212	472			G652AK002GA00D0	370	GAFM.007.040	101	GAFM.021.250	109
FTSS.013.1414	472			G652AK002GA00H0	370	GAFM.007.050	101	GAFM.021.300	109
FTSS.013.1818	472			G652AK003GA00D0	370	GAFM.007.065	101	GAFM.022.050	109
FTSS.013.3434	472			G652AK003GA00H0	370	GAFM.007.080	101	GAFM.022.065	109
FTSS.013.3838	472			G652AK004GA00D0	370	GAFM.007.100	101	GAFM.022.080	109
FTSS.013.4444	472			G652AK004GA00H0	370	GAFM.007.125	101	GAFM.022.100	109
FTSS.013.5454	472			G652AL0P20A0000	376	GAFM.007.150	101	GAFM.022.125	109
FTSS.013.6464	472			G652AL0P30A0000	376	GAFM.007.200/10	101	GAFM.022.150	109
FTSS.014.0202	472			G652AL0P40A0000	376	GAFM.007.200/16	101	GAFM.022.200	109
FTSS.014.0303	472			G652APBP2GA00DA	372	GAFM.007.250/10	101	GAFM.022.250	109
FTSS.014.1212	472			G652APBP2GA00DN	372	GAFM.007.250/16	101	GAFM.022.300	109
FTSS.014.1414	472			G652APBP2GA00HA	372	GAFM.007.300/10	101	GAFM.023.040	110
FTSS.014.1818	472			G652APBP2GA00HN	372	GAFM.007.300/16	101	GAFM.023.050	110
FTSS.014.2222	472			G652APBP3GA00DA	372	GAFM.012.050	103	GAFM.023.065	110
FTSS.014.3434	472			G652APBP3GA00DN	372	GAFM.012.065	103	GAFM.023.080	110
FTSS.014.3838	472			G652APBP3GA00HA	372	GAFM.012.080	103	GAFM.023.100	110
FTSS.014.4444	472			G652APBP3GA00HN	372	GAFM.012.100	103	GAFM.023.125	110
FTSS.014.5454	472			G652APBP4GA00DA	372	GAFM.012.125	103	GAFM.023.150	110
FTSS.014.6464	472			G652APBP4GA00DN	372	GAFM.012.150	103	GAFM.023.200/10	110
FTSS.015.0202	472			G652APBP4GA00HA	372	GAFM.012.200	103	GAFM.023.200/16	110
FTSS.015.0303	472			G652APBP4GA00HN	372	GAFM.012.250	103	GAFM.023.250/10	110
FTSS.015.0404	472			G652APJP2GA00DA	372	GAFM.012.300	103	GAFM.023.250/16	110
FTSS.015.1212	472			G652APJP2GA00DN	372	GAFM.013.200	104	GAFM.023.300/10	110
FTSS.015.1414	472			G652APJP2GA00HA	372	GAFM.013.250	104	GAFM.023.300/16	110
FTSS.015.1818	472			G652APJP2GA00HN	372	GAFM.013.300	104	GAFM.023.350/10	110
FTSS.015.2222	472			G652APJP3GA00DA	372	GAFM.013.350	104	GAFM.023.350/16	110
FTSS.015.3434	472			G652APJP3GA00DN	372	GAFM.013.400	104	GAFM.023.400/10	110
FTSS.015.3838	472			G652APJP3GA00HA	372	GAFM.013.500	104	GAFM.023.400/16	110
FTSS.015.4444	472			G652APJP3GA00HN	372	GAFM.013.600	104	GAFM.023.450	110
FTSS.015.5454	472			G652APJP4GA00DA	372	GAFM.014.065	105	GAFM.023.500	110
FTSS.015.6464	472			G652APJP4GA00DN	372	GAFM.014.080	105	GAFM.024.040	110
FTSS.016.0202	472			G652APJP4GA00HA	372	GAFM.014.100	105	GAFM.024.050	110
FTSS.016.1212	472			G652APJP4GA00HN	372	GAFM.014.125	105	GAFM.024.065	110
FTSS.016.1414	472			G652AR002GA00D0	370	GAFM.014.150	105	GAFM.024.080	110
FTSS.016.3434	472			G652AR002GA00H0	370	GAFM.014.200	105	GAFM.024.100	110
FTSS.016.3838	472			G652AR003GA00D0	370	GAFM.014.250	105	GAFM.024.125	110

GAFM.024.150	110	GEAX.003.09	218	GLFM.011.300	122	GR B002 A00	538	HAX.004.6368	475
GAFM.024.200/10	110	GEAX.003.11	218	GLFM.012.015	123	GR D000 A00	538	HAX.004.6873	475
GAFM.024.200/16	110	GEAX.003.14	218	GLFM.012.020	123	GR D002 A00	538	HAX.004.7379	475
GAFM.024.250/10	110	GEAX.003.17	218	GLFM.012.025	123	GR E000 A00	538	HAX.004.7985	475
GAFM.024.250/16	110	GEAX.003.22	218	GLFM.012.032	123	GR E002 A00	538	HAX.004.8591	475
GAFM.024.300/10	110	GEAX.003.27	218	GLFM.012.040	123	GR F000 A00	538	HAX.004.9197	475
GAFM.024.300/16	110	GEAX.004.01	219	GLFM.012.050	123	GR F002 A00	538	HAX.005.12	476
GAFM.026.040	111	GEAX.004.02	219	GLFM.012.065	123	GR G000 A00	538	HAX.005.14	476
GAFM.026.050	111	GEXX.001.01	218	GLFM.012.080	123	GR G002 A00	538	HAX.005.34	476
GAFM.026.065	111	GLFM.001.015	121	GLFM.012.100	123	GR H000 A00	538	HAX.005.38	476
GAFM.026.080	111	GLFM.001.020	121	GLFM.012.125	123	GR H002 A00	538	HAX.005.44	476
GAFM.026.100	111	GLFM.001.025	121	GLFM.012.150	123	GR J000 A00	538	HAX.005.64	476
GAFM.026.125	111	GLFM.001.032	121	GLFM.012.200	123	GR J002 A00	538	HAX.006.12	476
GAFM.026.150	111	GLFM.001.040	121	GLFM.012.250	123	GR K000 A00	538	HAX.006.14	476
GAFM.026.200/10	111	GLFM.001.050	121	GLFM.012.300	123	GR K002 A00	538	HAX.006.34	476
GAFM.026.200/16	111	GLFM.001.065	121	GLFM.012.350	123	GR L000 A00	538	HAX.006.38	476
GAFM.026.250/10	111	GLFM.001.080	121	GLFP.002.015/12	136	GR L002 A00	538	HAX.006.44	476
GAFM.026.250/16	111	GLFM.001.100	121	GLFP.002.015/40	136	GR V000 A00	538	HAX.006.64	476
GAFM.026.300/10	111	GLFM.001.125	121	GLFP.002.020/20	136	GR V002 A00	538	HAX.007.1335	476
GAFM.026.300/16	111	GLFM.001.150	121	GLFP.002.020/40	136	GR W000 A00	538	HAX.007.3575	476
GAFM.026.350/10	111	GLFM.001.200	121	GLFP.002.025/10	136	GR W002 A00	538	HAX.008.1335	476
GAFM.026.350/16	111	GLFM.003.015	124	GLFP.002.025/40	136	GSM12-5-02M	539	HAX.009.140150	475
GAFM.026.400/10	111	GLFM.003.020	124	GLFP.002.032/07	136	GSM12-5-05M	539	HAX.009.150162	475
GAFM.026.400/16	111	GLFM.003.025	124	GLFP.002.032/20	136	GSM12-5-10M	539	HAX.009.162174	475
GAFM.028.040	99	GLFM.003.032	124	GLFP.002.040/12	136	GSM12-5-90	539	HAX.009.1719	475
GAFM.028.050	99	GLFM.003.040	124	GLFP.002.050/10	136	GSRO 1100 A00	539	HAX.009.174187	475
GAFM.028.065	99	GLFM.003.050	124	GLFP.002.065/07	136	GSRO 2100 A00	539	HAX.009.182700	475
GAFM.028.080	99	GLFM.003.065	124	GLFP.002.080/05	136	GSRO 3100 A00	539	HAX.009.1921	475
GAFM.028.100	99	GLFM.003.080	124	GLFP.002.100/02	136	GSRO 4100 A00	539	HAX.009.200213	475
GAFM.028.125	99	GLFM.003.100	124	GLFP.003.015/12	132	GSRO 5100 A00	539	HAX.009.2123	475
GAFM.028.150	99	GLFM.003.125	124	GLFP.003.020/06	132	GSRO 6100 A00	539	HAX.009.213226	475
GAFM.028.200	99	GLFM.003.150	124	GLFP.003.025/10	132	GSXR 1100 A00	539	HAX.009.226239	475
GAFM.028.250	99	GLFM.003.200	124	GLFP.003.032/07	132	GSXR 2100 A00	539	HAX.009.2325	475
GAFM.028.300	99	GLFM.004.015	124	GLFP.003.040/12	132	GSXR 3100 A00	539	HAX.009.239252	475
GAFM.029.040	100	GLFM.004.020	124	GLFP.003.050/10	132	GSXR 4100 A00	539	HAX.009.2527	475
GAFM.029.050	100	GLFM.004.025	124	GLFP.003.065/07	132	GSXR 5100 A00	539	HAX.009.2729	475
GAFM.029.065	100	GLFM.004.032	124	GLFP.003.080/05	132	GSXR 6100 A00	539	HAX.009.2931	475
GAFM.029.080	100	GLFM.004.040	124	GLFP.003.100/02	132			HAX.009.3134	475
GAFM.029.100	100	GLFM.004.050	124	GLSM.001.002	119			HAX.009.3437	475
GAFM.029.125	100	GLFM.004.065	124	GLSM.001.012	119			HAX.009.3740	475
GAFM.029.150	100	GLFM.004.080	124	GLSM.001.034	119			HAX.009.4043	475
GAFM.029.200	100	GLFM.004.100	124	GLSM.001.038	119			HAX.009.4347	475
GAFM.029.250	100	GLFM.004.125	124	GLSM.001.044	119			HAX.009.4751	475
GAFM.029.300	100	GLFM.004.150	124	GLSM.001.054	119			HAX.009.5155	475
GAFM.030.040	102	GLFM.004.200	124	GLSM.001.064	119			HAX.009.5559	475
GAFM.030.050	102	GLFM.005.065	125	GLSM.002.002	119			HAX.009.5963	475
GAFM.030.065	102	GLFM.005.080	125	GLSM.002.012	119			HAX.009.6368	475
GAFM.030.080	102	GLFM.005.100	125	GLSM.002.034	119			HAX.009.6873	475
GAFM.030.100	102	GLFM.005.125	125	GLSM.002.044	119			HAX.009.7379	475
GAFM.030.125	102	GLFM.005.150	125	GLSM.002.054	119			HAX.009.7985	475
GAFM.030.150	102	GLFM.005.200	125	GLSM.002.064	119			HAX.009.8591	475
GAFM.030.200	102	GLFM.005.250	125	GLSM.003.002	120			HAX.009.9197	475
GAFM.030.250	102	GLFM.006.065	125	GLSM.003.012	120			HEP.1.040.BK.010017	434
GAFM.030.300	102	GLFM.006.080	125	GLSM.003.034	120			HEP.1.040.BK.013020	434
GAFM.031.040	102	GLFM.006.100	125	GLSM.003.038	120			HEP.1.040.BK.015022	434
GAFM.031.050	102	GLFM.006.125	125	GLSM.003.044	120			HEP.1.040.BK.019027	434
GAFM.031.065	102	GLFM.006.150	125	GLSM.003.054	120			HEP.1.040.BK.025034	434
GAFM.031.080	102	GLFM.006.200	125	GLSM.003.064	120			HEP.1.040.BK.032044	434
GAFM.031.100	102	GLFM.007.015	126	GLTM.001.002	117			HEP.1.040.BK.038052	434
GAFM.031.125	102	GLFM.007.020	126	GLTM.001.012	117			HEP.1.040.BK.042056	434
GAFM.031.150	102	GLFM.007.025	126	GLTM.001.034	117			HEP.1.040.BK.050065	434
GAFM.031.200	102	GLFM.007.032	126	GLTM.001.038	117			HEP.1.040.GR.010017	434
GAFM.031.250	102	GLFM.007.040	126	GLTM.001.044	117			HEP.1.040.GR.013020	434
GAFM.031.300	102	GLFM.007.050	126	GLTM.001.054	117			HEP.1.040.GR.015022	434
GATM.001.002	97	GLFM.007.065	126	GLTM.001.064	117			HEP.1.040.GR.019027	434
GATM.001.003	97	GLFM.007.080	126	GLTM.002.002	118			HEP.1.040.GR.025034	434
GATM.001.004	97	GLFM.007.100	126	GLTM.002.012	118			HEP.1.040.GR.032044	434
GATM.001.012	97	GLFM.007.125	126	GLTM.002.034	118			HEP.1.040.GR.038052	434
GATM.001.014	97	GLFM.007.150	126	GLTM.002.044	118			HEP.1.040.GR.042056	434
GATM.001.022	97	GLFM.007.200	126	GLTM.002.054	118			HEP.1.040.GR.050066	434
GATM.001.034	97	GLFM.007.250	126	GLTM.002.064	118			HEP.1.080.BK.010017	434
GATM.001.038	97	GLFM.008.015	126	GLTM.003.002	117			HEP.1.080.BK.013020	434
GATM.001.044	97	GLFM.008.020	126	GLTM.003.012	117			HEP.1.080.BK.015022	434
GATM.001.054	97	GLFM.008.025	126	GLTM.003.034	117			HEP.1.080.BK.019027	434
GATM.001.064	97	GLFM.008.032	126	GLTM.003.038	117			HEP.1.080.GR.010017	434
GATM.002.002	97	GLFM.008.040	126	GLTM.003.044	117			HEP.1.080.GR.013020	434
GATM.002.003	97	GLFM.008.050	126	GLTM.003.054	117			HEP.1.080.GR.015022	434
GATM.002.004	97	GLFM.008.065	126	GLTM.003.064	117			HEP.1.080.GR.019027	434
GATM.002.012	97	GLFM.008.080	126	GLTM.004.002	118			HEP.1.080.YE.010020	434
GATM.002.022	97	GLFM.008.100	126	GLTM.004.012	118			HEP.1.080.YE.013023	434
GATM.002.034	97	GLFM.008.125	126	GLTM.004.034	118			HEP.1.080.YE.016027	434
GATM.002.044	97	GLFM.008.150	126	GLTM.004.044	118			HEP.1.080.YE.019030	434
GATM.002.054	97	GLFM.008.200	126	GLTM.004.054	118			HEP.1.080.YE.025037	434
GATM.002.064	97	GLFM.009.015	125	GLTM.004.064	118			HEP.1.080.YE.032044	434
GATM.003.002	98	GLFM.009.020	125	GLTM.005.002	139			HEP.1.080.YE.038051	434
GATM.003.003	98	GLFM.009.025	125	GLTM.005.003	139			HEP.1.080.YE.042056	434
GATM.003.004	98	GLFM.009.032	125	GLTM.005.012	139			HEP.1.080.YE.050066	434
GATM.003.012	98	GLFM.009.040	125	GLTM.005.022	139			HEP.1.080.YE.050066	434
GATM.003.022	98	GLFM.009.050	125	GLTM.005.034	139			HEP.1.080.YE.050066	434
GATM.003.034	98	GLFM.010.015	140	GLTM.005.044	139			HEP.1.080.YE.050066	434
GATM.003.038	98	GLFM.010.020	140	GLTM.005.054	139			HEP.1.080.YE.050066	434
GATM.003.044	98	GLFM.010.025	140	GLTM.005.064	139			HEP.1.080.YE.050066	434
GATM.003.054	98	GLFM.010.032	140	GLTM.006.002	139			HEP.1.080.YE.050066	434
GATM.003.064	98	GLFM.010.040	140	GLTM.006.003	139			HEP.1.080.YE.050066	434
GATM.004.002	98	GLFM.010.050	140	GLTM.006.004	139			HEP.1.080.YE.050066	434
GATM.004.012	98	GLFM.011.015	122	GLTM.006.012	139			HEP.1.080.YE.050066	434
GATM.004.034	98	GLFM.011.020	122	GLTM.006.022	139			HEP.1.080.YE.050066	434
GATM.004.044	98	GLFM.011.025	122	GLTM.006.034	139			HEP.1.080.YE.050066	434
GATM.004.054	98	GLFM.011.032	122	GLTM.006.044	139			HEP.1.080.YE.050066	434
GATM.004.064	98	GLFM.011.040	122	GLTM.006.054	139			HEP.1.080.YE.050066	434
GATM.004.064	98	GLFM.011.050	122	GLTM.006.064	139			HEP.1.080.YE.050066	434
GATM.004.064	98	GLFM.011.065	122	GR 0000 A00	538			HEP.1.080.YE.050066	434
GATM.004.064	98	GLFM.011.080	122	GR 0002 A00	538			HEP.1.080.YE.050066	434
GATM.004.064	98	GLFM.011.100	122	GR 3000 A00	538			HEP.1.080.YE.050066	434
GATM.004.064	98	GLFM.011.125	122	GR 3002 A00	538			HEP.1.080.YE.050066	434
GATM.004.064	98	GLFM.011.150	122	GR 6000 A00	538			HEP.1.080.YE.050066	434
GATM.004.064	98	GLFM.011.200	122	GR 6002 A00	538			HEP.1.080.YE.050066	434
GATM.004.064	98	GLFM.011.250	122	GR B000 A00	538			HEP.1.080.YE.050066	434
GATM.004.064	98								

INDEX

HNB.1.020.BK.038050	435	HPV.1.050.NA.020028	433
HNB.1.020.BK.040053	435	HPV.1.050.NA.025034	433
HNB.1.020.BK.045058	435	HPV.1.050.NA.025036	433
HNB.1.020.BK.050065	435	HPV.1.050.NA.030040	433
HNB.1.020.BK.060075	435	HPV.1.050.NA.032042	433
HNB.1.020.BK.080095	435	HPV.1.050.NA.038048	433
HNB.1.020.BK.100115	435	HPV.1.050.NA.040050	433
HNB.1.040.BK.006012	435	HPV.1.050.NA.040052	433
HNB.1.040.BK.007013	435	HPV.1.050.NA.045057	433
HNB.1.040.BK.008014	435	HPV.1.050.NA.050064	433
HNB.1.040.BK.009016	435	HPV.1.050.RE.006012	432
HNB.1.040.BK.010017	435	HPV.1.050.RE.008014	432
HNB.1.040.BK.013020	435	HPV.1.050.RE.009015	432
HNB.1.040.BK.016025	435	HPV.1.050.RE.010016	432
HNB.1.040.BK.019028	435	HPV.1.050.RE.012019	432
HNB.1.040.BK.025035	435	HPV.1.050.RE.013020	432
HNB.1.040.BK.025036	435	HPV.1.050.RE.015023	432
HNB.1.040.BK.030041	435	HPV.1.050.RE.016024	432
HNB.1.040.BK.032043	435	HPV.1.050.RE.019027	432
HNB.1.040.BK.035047	435	HPV.1.050.RE.020028	432
HNB.1.040.BK.038050	435	HPV.1.050.RE.025036	432
HNB.1.040.BK.040053	435	HPV.1.050.RE.030040	432
HNB.1.040.BK.045058	435		
HNB.1.040.BK.050065	435		
HNB.1.040.BK.060075	435		
HNB.1.040.BK.080095	435		
HNB.1.040.BK.100115	435		
HNB.1.080.BK.008014	435		
HNB.1.080.BK.013020	435		
HNB.1.080.BK.016025	435		
HNB.1.080.BK.019028	435		
HNB.1.080.BK.025035	435		
HNB.1.120.BK.006012	435		
HNB.1.120.BK.007013	435		
HNB.1.120.BK.008014	435		
HNB.1.120.BK.009016	435		
HNB.1.120.BK.010017	435		
HPE.1.010.BK.016020	436		
HPE.1.010.BK.020025	436		
HPE.1.010.BK.026030	436		
HPE.1.025.BK.016020	436		
HPE.1.025.BK.020025	436		
HPE.1.025.BK.026030	436		
HPE.1.050.BK.016020	436		
HPE.1.050.BK.020025	436		
HPE.1.050.BK.026030	436		
HPE.1.100.BK.016020	436		
HPE.1.100.BK.020025	436		
HPE.1.100.BK.026030	436		
HPE.2.010.BK.013021	436		
HPE.2.010.BK.019028	436		
HPE.2.010.BK.025034	436		
HPE.2.025.BK.013021	436		
HPE.2.025.BK.019028	436		
HPE.2.025.BK.025034	436		
HPE.2.050.BK.013021	436		
HPE.2.050.BK.019028	436		
HPE.2.050.BK.025034	436		
HPE.2.100.BK.013021	436		
HPE.2.100.BK.019028	436		
HPE.2.100.BK.025034	436		
HPV.1.025.NA.004010	433		
HPV.1.025.NA.005011	433		
HPV.1.025.NA.006012	433		
HPV.1.025.NA.007013	433		
HPV.1.025.NA.008014	433		
HPV.1.025.NA.009015	433		
HPV.1.025.NA.010016	433		
HPV.1.025.NA.012019	433		
HPV.1.025.NA.012021	433		
HPV.1.025.NA.013020	433		
HPV.1.025.NA.015023	433		
HPV.1.025.NA.016024	433		
HPV.1.025.NA.019027	433		
HPV.1.025.NA.020028	433		
HPV.1.025.NA.025034	433		
HPV.1.025.NA.025036	433		
HPV.1.025.NA.030040	433		
HPV.1.025.NA.032042	433		
HPV.1.025.NA.038048	433		
HPV.1.025.NA.040050	433		
HPV.1.025.NA.040052	433		
HPV.1.025.NA.045057	433		
HPV.1.025.NA.050064	433		
HPV.1.050.BL.006012	432		
HPV.1.050.BL.008014	432		
HPV.1.050.BL.009015	432		
HPV.1.050.BL.010016	432		
HPV.1.050.BL.012019	432		
HPV.1.050.BL.013020	432		
HPV.1.050.BL.015023	432		
HPV.1.050.BL.016024	432		
HPV.1.050.BL.019027	432		
HPV.1.050.BL.020028	432		
HPV.1.050.BL.025036	432		
HPV.1.050.BL.030040	432		
HPV.1.050.NA.004010	433		
HPV.1.050.NA.005011	433		
HPV.1.050.NA.006012	433		
HPV.1.050.NA.007013	433		
HPV.1.050.NA.008014	433		
HPV.1.050.NA.009015	433		
HPV.1.050.NA.010016	433		
HPV.1.050.NA.012019	433		
HPV.1.050.NA.012021	433		
HPV.1.050.NA.013020	433		
HPV.1.050.NA.015023	433		
HPV.1.050.NA.016024	433		
HPV.1.050.NA.019027	433		

K

K-10	292
K-13	292
K-16	292
K-20	292
K-25	292
K-30	292
K-36	292
K-8	292
K312984	253
K320011	253
KNAX.008.001	156
KNAX.009.001	156
KNAX.009.002	156
KNAX.009.003	156
KNAX.012.001	156
KNAX.012.002	156
KNAX.013.001	156
KNAX.013.002	156
KNAX.013.003	156
KNAX.013.004	156
KNAX.014.050	156
KNAX.014.065	156
KNAX.014.080	156
KNAX.014.100	156
KNAX.014.125	156
KNAX.014.150	156
KNAX.014.200	156
KNAX.014.250	156
KNAX.014.300	156
KNAX.015.050	156
KNAX.015.065	156
KNAX.015.080	156
KNAX.015.100	156
KNAX.015.125	156
KNAX.015.150	156
KNAX.015.200	156
KNAX.015.250	156
KNAX.015.300	156
KNAX.016.001	156
KNWE.004.050	155
KNWE.004.065	155
KNWE.004.080	155
KNWE.004.100	155
KNWE.004.125	155
KNWE.004.150	155
KNWE.004.200	155
KNWE.004.250	155
KNWE.004.300	155
KNWE.004.350	155
KNWE.004.400	155
KNWE.004.450	155
KNWE.004.500	155
KNWE.004.600	155
KNWE.005.000	155
KNWE.005.065	155
KNWE.005.080	155
KNWE.005.100	155
KNWE.005.125	155
KNWE.005.150	155
KNWE.005.200	155
KNWE.005.250	155
KNWE.005.300	155
KNWE.005.350	155
KNWE.005.400	155
KNWE.005.450	155
KNWE.005.500	155
KNWE.005.600	155
KNWE.006.065	155
KNWE.006.080	155
KNWE.006.100	155
KNWE.006.125	155
KNWE.006.150	155
KNWE.006.200	155
KNWE.006.250	155
KNWE.006.300	155
KNWE.006.350	155
KNWE.006.400	155
KNWE.006.450	155
KNWE.006.500	155
KNWE.006.600	155
KNWE.007.050	155
KNWE.007.065	155
KNWE.007.080	155
KNWE.007.100	155
KNWE.007.125	155
KNWE.007.150	155
KNWE.007.200	155
KNWE.007.250	155
KNWE.007.300	155
KNWE.007.350	155
KNWE.007.400	155
KNWE.007.450	155
KNWE.007.500	155
KNWE.007.600	155
KNWM.006.050	150
KNWM.006.065	150
KNWM.006.080	150
KNWM.006.100	150
KNWM.006.125	150
KNWM.006.150	150
KNWM.006.200	150
KNWM.006.250	150
KNWM.006.300	150
KNWM.006.350	150
KNWM.006.400	150
KNWM.006.450	150
KNWM.006.500	150
KNWM.006.600	150
KNWM.007.050	150
KNWM.007.065	150
KNWM.007.080	150
KNWM.007.100	150
KNWM.007.125	150
KNWM.007.150	150
KNWM.007.200	150
KNWM.008.050	150
KNWM.008.065	150
KNWM.008.080	150
KNWM.008.100	150
KNWM.008.125	150
KNWM.008.150	150
KNWM.008.200	150
KNWM.008.250	150
KNWM.008.300	150
KNWM.009.050	152
KNWM.009.065	152
KNWM.009.080	152
KNWM.009.100	152
KNWM.009.125	152
KNWM.009.150	152
KNWM.009.200	152
KNWM.009.250	152
KNWM.009.300	152
KNWM.009.350	152
KNWM.009.400	152
KNWM.009.450	152
KNWM.009.500	152
KNWM.009.600	152
KNWM.010.050	151
KNWM.010.065	151
KNWM.010.080	151
KNWM.010.100	151
KNWM.010.125	151
KNWM.010.150	151
KNWM.010.200	151
KNWM.010.250	151
KNWM.010.300	151
KNWM.010.350	151
KNWM.010.400	151
KNWM.011.050	151
KNWM.011.065	151
KNWM.011.080	151
KNWM.011.100	151
KNWM.011.125	151
KNWM.011.150	151
KNWM.011.200	151
KNWM.011.250	151
KNWM.011.300	151
KNWM.012.050	151
KNWM.012.065	151
KNWM.012.080	151
KNWM.012.100	151
KNWM.012.125	151
KNWM.012.150	151
KNWM.012.200	151
KNWM.012.250	151
KNWM.012.300	151
KNWM.013.050	152
KNWM.013.065	152
KNWM.013.080	152
KNWM.013.100	152
KNWM.013.125	152
KNWM.013.150	152
KNWM.013.200	152
KNWM.013.250	152
KNWM.013.300	152
KNWM.013.350	152
KNWM.013.400	152
KNWM.013.450	152
KNWM.013.500	152
KNWM.013.600	152
KNWM.014.050	153
KNWM.014.065	153
KNWM.014.080	153
KNWM.014.100	153

L

L11BA452BG00061	325
L11BA452OG00020	325
L11BA452OG00040	325
L11BB452BG00061	325
L11BB452OG00020	325
L11BB452OG00040	325
L11BB552BG00061	326
L11BB552OG00020	326
L11BB552OG00040	326
L11BB652BG00061	326
L11BB652OG00020	326
L11BB652OG00040	326
L11BB752BG00061	326
L11BB752OG00020	326
L11BP452OG00000	324
L11PP452OG00000	324
L11PP552OG00000	325
L11PP652OG00000	324
L11PP752OG00000	325
L12BA452BG00061	325
L12BA452OG00020	325
L12BA452OG00040	325
L12BB452BG00061	325
L12BB452OG00020	325
L12BB452OG00040	325
L12BB552BG00061	326
L12BB552OG00020	326
L12BB552OG00040	326
L12BB652BG00061	326
L12BB652OG00020	326
L12BB652OG00040	326
L12BB752BG00061	326
L12BB752OG00020	326
L12BA452OG00000	324
L12PA452OG00000	324
L12PP452OG00000	324
L12PP552OG00000	325
L12PP652OG00000	324
L12PP752OG00000	325
L22BA452BG00061	325
L22BA452OG00020	325
L22BA452OG00040	325
L22BB452BG00061	325
L22BB452OG00020	325
L22BB452OG00040	325
L22BB552BG00061	326
L22BB552OG00020	326
L22BB552OG00040	326
L22BB652BG00061	326
L22BB652OG00020	326
L22BB652OG00040	326
L22BB752BG00061	326
L22BB752OG00020	326
L22BB752OG00040	326
L22PA452OG00000	324
L22PP452OG00000	324
L22PP552OG00000	325
L22PP652OG00000	324
L22PP752OG00000	325
L23BA452BG00061	325
L23BA452OG00020	325
L23BA452OG00040	325
L23BB452BG00061	325
L23BB452OG00020	325
L23BB452OG000	

LAT.FIL.01.12	405	M653AE516209004	375	MAGA.004.00016	530	MAGS.009.M0003	524	MAGS.031.M0003	523
LAT.FIL.01.14	405	M653AE516209005	369	MAGA.004.00025	530	MAGS.010.00001	532	MAGS.033.00001	524
LAT.FIL.01.38	405	M669AQ440512003	368	MAGA.004.M0000	530	MAGS.010.00002	532	MAGS.033.00002	524
LAT.FIL.01.44	405	M669AQ440512003	375	MAGA.004.M0003	530	MAGS.010.00004	532	MAGS.033.00004	524
LAT.FR.X.01.12	406	M699AG438047001	370	MAGS.001.00002	521	MAGS.010.00006	532	MAGS.033.00006	524
LAT.FR.X.01.14	406	M699AG438047001	372	MAGS.001.00004	521	MAGS.010.00010	532	MAGS.033.00010	524
LAT.FR.X.01.38	406	M699AG438047001	374	MAGS.001.00006	521	MAGS.010.00016	532	MAGS.033.00016	524
LAT.FR.X.01.44	406	M699AG438047001	377	MAGS.001.00010	521	MAGS.010.00025	532	MAGS.033.00025	524
LAT.LUB.01	406	M699AG438047001	378	MAGS.001.00016	521	MAGS.010.00040	532	MAGS.033.00040	524
LAT.LUB.01.12	406	M699AG438047001	379	MAGS.001.00025	521	MAGS.010.00060	532	MAGS.033.00060	524
LAT.LUB.01.14	406	M699AG438047001	382	MAGS.001.00060	521	MAGS.010.00100	532	MAGS.033.00100	524
LAT.LUB.01.38	406	M699AG438047002	370	MAGS.001.00100	521	MAGS.010.00160	532	MAGS.033.00160	524
LAT.LUB.01.44	406	M699AG438047002	372	MAGS.002.00001	531	MAGS.010.00250	532	MAGS.033.00250	524
LAT.REG.01.02	405	M699AG438047002	374	MAGS.002.00002	531	MAGS.010.00400	532	MAGS.033.00400	524
LAT.REG.01.12	405	M699AG438047002	377	MAGS.002.00004	531	MAGS.010.00600	532	MAGS.033.00600	524
LAT.REG.01.14	405	M699AG438047002	382	MAGS.002.00006	531	MAGS.010.01000	532	MAGS.033.01000	524
LAT.REG.01.38	405	M699AG438047003	382	MAGS.002.00010	531	MAGS.010.M0000	532	MAGS.033.M0000	524
LAT.REG.01.44	405	M699AG440510002	382	MAGS.002.00016	531	MAGS.010.M0003	532	MAGS.033.M0003	524
LAT.REG.01.64	405	M699AG500179001	382	MAGS.002.00025	531	MAGS.011.00001	525	MAGS.034.00001	525
LD ST01 115V	343	M699AG503396001	382	MAGS.002.00040	531	MAGS.011.00002	525	MAGS.034.00002	525
LD ST01 230V	343	M699AG504650002	382	MAGS.002.00060	531	MAGS.011.00004	525	MAGS.034.00004	525
LD ST01 24V=	343	M699AQ440512002	367	MAGS.002.00100	531	MAGS.011.00006	525	MAGS.034.00006	525
LD ST03 115V	343	M699AQ440512002	368	MAGS.002.00160	531	MAGS.011.00010	525	MAGS.034.00010	525
LD ST03 230V	343	M699AQ440512002	373	MAGS.002.00250	531	MAGS.011.00016	525	MAGS.034.00016	525
LD ST03 24V=	343	M699AQ440512002	375	MAGS.002.00400	531	MAGS.011.00025	525	MAGS.034.00025	525
LIAX.001.002	221	M699AQ440512003	367	MAGS.002.00600	531	MAGS.011.00040	525	MAGS.034.00040	525
LIAX.001.004	221	M699AQ440512003	373	MAGS.002.01000	531	MAGS.011.00060	525	MAGS.034.00060	525
LIAX.001.005	221	M699AQ501862001	367	MAGS.002.M0000	531	MAGS.011.00100	525	MAGS.034.00100	525
LIAX.002.001	221	M699AQ501862001	368	MAGS.002.M0003	531	MAGS.011.00160	525	MAGS.034.00160	525
LIAX.002.002	221	M699AQ501862001	373	MAGS.003.00002	521	MAGS.011.00250	525	MAGS.034.00250	525
LIAX.003.001	221	M699AQ501862001	375	MAGS.003.00004	521	MAGS.011.00400	525	MAGS.034.00400	525
LIAX.003.002	216	M6MB	416	MAGS.003.00006	521	MAGS.011.00600	525	MAGS.034.00600	525
LIAX.003.002	221	MAAX.01.01.1818	535	MAGS.003.00010	196	MAGS.011.01000	525	MAGS.034.01000	525
LIAX.004.003	222	MAAX.01.02.1414	196	MAGS.003.00010	197	MAGS.011.M0000	525	MAGS.034.M0000	525
LIAX.004.004	222	MAAX.01.02.1414	197	MAGS.003.00010	521	MAGS.011.M0003	525	MAGS.034.M0003	525
LIAX.004.005	222	MAAX.01.02.1414	535	MAGS.003.00016	510	MAGS.012.00001	532	MAGS.035.00001	533
LIAX.004.007	222	MAAX.01.03.1212	535	MAGS.003.00016	511	MAGS.012.00002	532	MAGS.035.00002	533
LIAX.004.010	222	MAAX.02.01.1818	535	MAGS.003.00016	521	MAGS.012.00004	532	MAGS.035.00004	533
LIAX.004.012	222	MAAX.02.02.1414	535	MAGS.003.00025	393	MAGS.012.00006	532	MAGS.035.00006	533
LIAX.004.014	222	MAAX.02.03.1212	535	MAGS.003.00025	521	MAGS.012.00010	532	MAGS.035.00010	533
LIAX.004.016	222	MAAX.03.01.1214	535	MAGS.003.00060	521	MAGS.012.00016	532	MAGS.035.00016	533
LIXX.001.001	220	MAAX.03.01.1218	535	MAGS.003.00100	521	MAGS.012.00025	532	MAGS.035.00025	533
LIXX.001.002	220	MAAX.03.01.1234	535	MAGS.004.00001	531	MAGS.012.00040	532	MAGS.035.00040	533
LIXX.002.001	220	MAAX.03.01.1238	535	MAGS.004.00002	531	MAGS.012.00060	532	MAGS.035.00060	533
LIXX.003.001	220	MAAX.03.01.1412	535	MAGS.004.00004	531	MAGS.012.00100	532	MAGS.035.00100	533
LOSANGEM3	305	MAAX.03.01.1418	535	MAGS.004.00006	531	MAGS.012.00160	532	MAGS.035.00160	533
LOSANGEM4	305	MAAX.03.01.1438	535	MAGS.004.00010	531	MAGS.012.00250	532	MAGS.035.00250	533
		MAAX.03.01.1814	535	MAGS.004.00016	531	MAGS.012.00400	532	MAGS.035.00400	533
		MAAX.03.01.3412	535	MAGS.004.00025	531	MAGS.012.00600	532	MAGS.035.00600	533
		MAAX.03.01.3812	535	MAGS.004.00040	531	MAGS.012.01000	532	MAGS.035.01000	533
		MAAX.03.01.3814	535	MAGS.004.00060	531	MAGS.012.M0000	532	MAGS.035.M0000	533
		MAAX.04.01.1214	535	MAGS.004.00100	531	MAGS.012.M0003	532	MAGS.035.M0003	533
		MAAX.04.01.1218	535	MAGS.004.00160	531	MAGS.013.00002	528	MAXA.001.00002	526
		MAAX.04.01.1234	535	MAGS.004.00250	531	MAGS.013.00004	528	MAXA.001.00004	526
		MAAX.04.01.1238	535	MAGS.004.00400	531	MAGS.013.00006	528	MAXA.001.00006	526
		MAAX.04.01.1412	535	MAGS.004.00600	531	MAGS.013.00010	528	MAXA.001.00010	526
		MAAX.04.01.1418	535	MAGS.004.01000	531	MAGS.013.00016	528	MAXA.001.00016	526
		MAAX.04.01.1438	535	MAGS.004.M0000	531	MAGS.013.00025	528	MAXA.001.00025	526
		MAAX.04.01.1814	535	MAGS.004.M0003	531	MAGS.013.00060	528	MAXA.001.M0000	526
		MAAX.04.01.3412	535	MAGS.005.00002	522	MAGS.013.00100	528	MAXA.001.M0003	526
		MAAX.04.01.3812	535	MAGS.005.00004	522	MAGS.013.M0000	528	MAXA.002.00002	526
		MAAX.04.01.3814	535	MAGS.005.00006	522	MAGS.013.M0003	528	MAXA.002.00004	526
		MAAX.05.01.1414	535	MAGS.005.00010	522	MAGS.014.00002	534	MAXA.002.00006	526
		MAAX.05.02.1212	535	MAGS.005.00016	522	MAGS.014.00004	534	MAXA.002.00010	526
		MAAX.06.01.1414	535	MAGS.005.00025	522	MAGS.014.00006	534	MAXA.002.00016	526
		MAAX.06.02.1212	535	MAGS.005.00060	522	MAGS.014.00010	534	MAXA.002.00025	526
		MAAX.07.01.1212	535	MAGS.005.00100	522	MAGS.014.00016	534	MAXA.002.M0000	526
		MAAX.08.01.1212	535	MAGS.006.00002	525	MAGS.014.00025	534	MAXA.002.M0003	526
		MAAX.09.01.1414	536	MAGS.006.00004	525	MAGS.014.00060	534	MAXA.003.00002	529
		MAAX.09.02.1212	536	MAGS.006.00006	525	MAGS.014.00100	534	MAXA.003.00004	529
		MAAX.10.02.1212	536	MAGS.006.00010	525	MAGS.014.M0000	534	MAXA.003.00006	529
		MAAX.11.01.1212	536	MAGS.006.00016	525	MAGS.014.M0003	534	MAXA.003.00010	529
		MAAX.12.02.1212	536	MAGS.006.00025	525	MAGS.015.00002	528	MAXA.003.00016	529
		MAAX.13.02.1212	536	MAGS.006.00060	525	MAGS.015.00004	528	MAXA.003.00025	529
		MAAX.14.01.1212	536	MAGS.006.00100	525	MAGS.015.00006	528	MAXA.003.M0000	529
		MAAX.14.01.1414	536	MAGS.007.00002	528	MAGS.015.00010	528	MAXA.003.M0003	529
		MAAX.15.01.1212	536	MAGS.007.00004	528	MAGS.015.00016	528	MAXA.004.00002	529
		MAAX.15.01.1414	536	MAGS.007.00006	528	MAGS.015.00025	528	MAXA.004.00004	529
		MAAX.16.01.1212	536	MAGS.007.00010	528	MAGS.015.00060	528	MAXA.004.00006	529
		MAAX.16.01.1414	536	MAGS.007.00016	405	MAGS.015.00100	528	MAXA.004.00010	529
		MAGA.001.M0000	527	MAGS.007.00016	528	MAGS.015.M0000	528	MAXA.004.00016	529
		MAGA.001.M0002	527	MAGS.007.00025	528	MAGS.015.M0003	528	MAXA.004.00025	529
		MAGA.001.M0003	527	MAGS.007.00040	528	MAGS.016.00002	534	MAXA.004.M0000	529
		MAGA.001.M0004	527	MAGS.007.00100	528	MAGS.016.00004	534	MAXA.004.M0003	529
		MAGA.001.M0006	527	MAGS.007.00250	528	MAGS.016.00006	534	MAXS.001.00002	520
		MAGA.001.M0010	527	MAGS.007.M0000	528	MAGS.016.00010	534	MAXS.001.00004	520
		MAGA.001.M0016	527	MAGS.008.00002	533	MAGS.016.00016	534	MAXS.001.00006	520
		MAGA.001.M0025	527	MAGS.008.00006	533	MAGS.016.00025	534	MAXS.001.00010	520
		MAGA.002.M0000	527	MAGS.008.00010	533	MAGS.016.00060	534	MAXS.001.00016	520
		MAGA.002.M0002	527	MAGS.008.00016	533	MAGS.016.00100	534	MAXS.001.00025	520
		MAGA.002.M0003	527	MAGS.008.00250	533	MAGS.016.M0000	534	MAXS.002.00004	523
		MAGA.002.M0004	527	MAGS.008.M0000	533	MAGS.016.M0003	534	MAXS.002.00006	523
		MAGA.002.M0006	527	MAGS.009.00001	524	MAGS.031.00001	523	MAXS.002.00010	523
		MAGA.002.M0010	527	MAGS.009.00002	524	MAGS.031.00002	523	MAXS.002.00016	523
		MAGA.002.M0016	527	MAGS.009.00004	524	MAGS.031.00004	523	MAXS.002.00025	523
		MAGA.002.M0025	527	MAGS.009.00006	524	MAGS.031.00006	523	MAXS.002.00040	523
		MAGA.003.00002	530	MAGS.009.00010	524	MAGS.031.00010	523	MAXS.003.00004	521
		MAGA.003.00004	530	MAGS.009.00016	524	MAGS.031.00016	523	MAXS.003.00010	195
		MAGA.003.00006	530	MAGS.009.00025	524	MAGS.031.00025	523	MAXS.003.00016	521
		MAGA.003.00010	530	MAGS.009.00040	524	MAGS.031.00040	523	MAXS.003.00012	521
		MAGA.003.00016	530	MAGS.009.00060	524	MAGS.031.00060	523	MAXS.003.0004	382
		MAGA.003.00025	530	MAGS.009.00100	524	MAGS.031.00100	523	MAXS.003.0012	382
		MAGA.003.M0000	530	MAGS.009.00160	524	MAGS.031.00160	523	MAXS.004.00004	521
		MAGA.003.M0							

INDEX

SCE238D002MO.AC/DC	240	SG110A121.230/50	287	SO 23021-6	451	STAX.002.001	193
SCE238D003MO.AC/DC	240	SG110A121.24/DC	287	SO 23021-8	451	STAX.002.002	193
SCE238D004MO.AC/DC	240	SO 20371-1/2	451	SO 23721-10-1/4	451	STAX.002.003	193
SCE238D005MO.AC/DC	240	SO 20371-1/4	451	SO 23721-10-3/8	451	STAX.002.004	193
SCE353A811.230/50	284	SO 20371-1/8	451	SO 23721-4-1/4	451	STAX.002.005	193
SCE353A811.24/DC	284	SO 20371-3/8	451	SO 23721-4-1/8	451	STAX.002.006	193
SCE353A821.24/DC	284	SO 20511-10-3/8	468	SO 23721-6-1/4	451	STAX.002.007	193
SCE353A831.230/50	284	SO 20511-12-1/2	468	SO 23721-6-1/8	451	STAX.003.001	193
SCE353A831.24/DC	284	SO 20511-12-3/8	468	SO 23721-8-1/4	451	STAX.003.002	193
SCG210C087.230/50	239	SO 20511-4-1/8	468	SO 23721-8-1/8	451	STAX.003.003	193
SCG210C087.24/DC	239	SO 20511-6-1/4	468	SO 50001-10	455	STAX.003.004	193
SCG210C088.230/50	239	SO 20511-6-1/8	468	SO 50001-12	455	STAX.003.005	193
SCG210C088.24/DC	239	SO 20511-8-1/4	468	SO 50001-4	455	STAX.003.006	193
SCG210D189.230/50	239	SO 20511-10-3/8	468	SO 50001-6	455	STAX.003.007	193
SCG210D189.24/DC	239	SO 2021-12	450	SO 50001-8	455	STAX.004.001	193
SCG238A044.230/50	236	SO 2021-4	450	SO 50003-10-8	455	STAX.004.002	193
SCG238A044.24/DC	236	SO 2021-6	450	SO 50003-12-10	455	STAX.004.003	193
SCG238A044.24/DC	236	SO 2021-8	450	SO 50003-6-4	455	STAX.004.004	193
SCG238A044.24/DC	236	SO 21109-1/2k -1/2	451	SO 50003-8-6	455	STAX.004.005	193
SCG238A044.24/DC	236	SO 21109-1/2k -3/4	451	SO 51021-10	455	STAX.004.006	193
SCG238A046.230/50	236	SO 21109-1/4k -1/2	451	SO 51021-12	455	STAX.004.007	193
SCG238A046.230/50	236	SO 21109-1/4k -1/4	451	SO 51021-4	455	STAX.005.001	193
SCG238A046.24/DC	236	SO 21109-1/4k -3/8	451	SO 51021-6	455	STAX.005.002	193
SCG238A046.24/DC	236	SO 21109-1/8k -1/8	451	SO 51021-8	455	STAX.006.001	193
SCG238A047.230/50	236	SO 21109-1/8k -1/4	451	SO 51121-10-1/2	455	STAX.007.001	193
SCG238A047.24/DC	236	SO 21109-3/8k -1/2	451	SO 51121-10-1/4	455	STAX.007.001	194
SCG238A048.230/50	236	SO 21109-3/8k -3/8	451	SO 51121-10-3/8	455	STAX.008.002	194
SCG238A048.230/50	236	SO 21121-10-1/2	450	SO 51121-12-1/2	455	STAX.009.001	194
SCG238A048.24/DC	236	SO 21121-10-1/4	450	SO 51121-12-3/8	455	STAX.009.002	194
SCG238A048.24/DC	236	SO 21121-10-3/8	450	SO 51121-4-1/8	455	STAX.010.001	194
SCG238A049.230/50	236	SO 21121-12-1/2	450	SO 51121-6-1/4	455	STAX.010.002	194
SCG238A049.24/DC	236	SO 21121-12-1/4	450	SO 51121-6-1/8	455	STAX.010.003	194
SCG238A050.230/50	236	SO 21121-12-3/8	450	SO 51121-8-1/4	455	STAX.010.004	194
SCG238A050.230/50	236	SO 21121-4-1/2	450	SO 51121-8-1/8	455	STAX.011.001	194
SCG238A050.24/DC	236	SO 21121-4-1/4	450	SO 51121-8-3/8	455	STAX.011.002	194
SCG238A050.24/DC	236	SO 21121-4-1/8	450	SO 51521-10	455	STAX.012.001	194
SCG238D101V.AC/DC	242	SO 21121-4-3/8	450	SO 51521-12	455	STAX.013.001	194
SCG238D102V.AC/DC	242	SO 21121-6-1/2	450	SO 51521-6	455	STAX.013.002	194
SCG238D103V.AC/DC	242	SO 21121-6-1/4	450	SO 51521-8	455	STAX.014.001	194
SCG238D104V.AC/DC	242	SO 21121-6-1/8	450	SO 52021-10	455	STAX.014.002	194
SCG238D105V.AC/DC	250	SO 21121-6-3/8	450	SO 52021-12	455	STAX.015.001	194
SCG238D106V.AC/DC	250	SO 21121-8-1/2	450	SO 52021-4	455	STAX.015.002	194
SCG238D107V.AC/DC	250	SO 21121-8-1/4	450	SO 52021-6	455	STFX.001.015	187
SCG238D108V.AC/DC	250	SO 21121-8-1/8	450	SO 52021-8	455	STFX.001.020	187
SCG238E016MO.AC/DC	240	SO 21121-8-3/8	450	SO 52121-10-1/2	455	STFX.001.025	187
SCG238E017MO.AC/DC	240	SO 21121-10-1/2	450	SO 52421-10-1/4	455	STFX.001.032	187
SCG238E018MO.AC/DC	240	SO 21121-10-1/4	450	SO 52421-10-3/8	455	STFX.001.040	187
SCG238E019.230/50	248	SO 21121-10-3/8	450	SO 52421-12-1/2	455	STFX.001.050	187
SCG238E019.24/DC	248	SO 21121-4-1/2	450	SO 52421-12-3/8	455	STFX.001.065	187
SCG238E020.230/50	248	SO 21121-4-1/4	450	SO 52421-4-1/8	455	STFX.001.080	187
SCG238E020.24/DC	248	SO 21121-4-1/8	450	SO 52421-6-1/4	455	STFX.001.100	187
SCG238E021.230/50	248	SO 21121-4-3/8	450	SO 52421-6-1/8	455	STFX.001.125	187
SCG238E021.24/DC	248	SO 21121-6-1/2	450	SO 52421-8-1/4	455	STFX.001.150	187
SCG256B002VMS.AC/DC	230	SO 21121-6-1/4	450	SO 52421-8-1/8	455	STFX.001.200/10	187
SCG256B004VMS.AC/DC	230	SO 21121-6-1/8	450	SO 52421-8-3/8	455	STFX.001.200/16	187
SCG256B402VMS.AC/DC	230	SO 21121-6-3/8	450	SO 53021-10	455	STFX.001.250/10	187
SCG256B414VMS.AC/DC	230	SO 21121-8-1/2	450	SO 53021-12	455	STFX.001.250/16	187
SCG287A001.230/50	232	SO 21121-8-1/4	450	SO 53021-4	455	STFX.001.300/10	187
SCG287A001.24/DC	232	SO 21121-8-1/8	450	SO 53021-6	455	STFX.001.300/16	187
SCG287A002.230/50	232	SO 21121-8-3/8	450	SO 53021-8	455	STFX.001.350	187
SCG287A002.24/DC	232	SO 21521-10	450	SOLIDDRIVE 100 carry	489	STFX.001.400	187
SCG287A003.230/50	232	SO 21521-12	450	SOLIDDRIVE 100 Leonardo	489	STFX.002.015	188
SCG287A003.24/DC	232	SO 21521-4	450	SRI 0000 A00	538	STFX.002.020	188
SCG287A004.230/50	232	SO 21521-6	450	SRI 0002 A00	538	STFX.002.025	188
SCG287A004.24/DC	232	SO 21521-8	450	SRI 3002 A00	538	STFX.002.032	188
SCG287A005.230/50	234	SO 21624-A10-1/2 OR	451	SRI 6002 A00	538	STFX.002.040	188
SCG287A005.24/DC	234	SO 21624-A10-1/4 OR	451	SRI B000 A00	538	STFX.002.050	188
SCG287A006.230/50	234	SO 21624-A10-3/8 OR	451	SRI B002 A00	538	STFX.002.065	188
SCG287A006.24/DC	234	SO 21624-A12-1/2 OR	451	SRI C000 A00	538	STFX.002.080	188
SCG287A007.230/50	234	SO 21624-A12-1/4 OR	451	SRI C002 A00	538	STFX.002.100	188
SCG287A007.24/DC	234	SO 21624-A12-3/8 OR	451	SRI D002 A00	538	STFX.002.125	188
SCG287A008.230/50	234	SO 21624-A6-1/4 OR	451	SRI E002 A00	538	STFX.002.150	188
SCG287A008.24/DC	234	SO 21624-A6-1/8 OR	451	SRI F002 A00	538	STFX.002.200	188
SCG287A009.230/50	232	SO 21624-A6-3/8 OR	451	SRI G002 A00	538	STFX.003.015	188
SCG287A009.24/DC	232	SO 21624-A8-1/4 OR	451	SRI H002 A00	538	STFX.003.020	188
SCG287A010.230/50	232	SO 21624-A8-1/8 OR	451	SRI J002 A00	538	STFX.003.025	188
SCG287A010.24/DC	232	SO 21624-A8-3/8 OR	451	SRI K002 A00	538	STFX.003.032	188
SCG287A011.230/50	232	SO 21821-A10-6	451	SRI L000 A00	538	STFX.003.040	188
SCG287A011.24/DC	232	SO 21821-A10-8	451	SRI L002 A00	538	STFX.003.050	188
SCG287A012.230/50	232	SO 21821-A12-10	451	SR2 N000 A00	538	STFX.003.065	188
SCG287A012.24/DC	232	SO 21821-A12-6	451	SR2 N002 A00	538	STFX.003.080	188
SCG287A013.230/50	234	SO 21821-A12-8	451	SR2 P000 A00	538	STFX.003.100	188
SCG287A013.24/DC	234	SO 21821-A8-4	451	SR2 P002 A00	538	STFX.003.125	188
SCG287A014.230/50	234	SO 21821-A8-6	451	SR2 R000 A00	538	STFX.003.150	188
SCG287A014.24/DC	234	SO 22021-10	451	SR2 R002 A00	538	STFX.003.200	188
SCG287A015.230/50	234	SO 22021-12	451	SR2 V000 A00	538	STFX.004.015	188
SCG287A015.24/DC	234	SO 22021-4	451	SR2 V002 A00	538	STFX.004.020	188
SCG287A016.230/50	234	SO 22021-6	451	SR2 W000 A00	538	STFX.004.025	188
SCG287A016.24/DC	234	SO 22021-8	451	SR2 W002 A00	538	STFX.004.032	188
SCG327A609.230/50	274	SO 22421-10-1/4	451	SS100	303	STFX.004.040	188
SCG327A609.24/DC	274	SO 22421-10-3/8	451	SS125	303	STFX.004.050	188
SCG327A610.230/50	274	SO 22421-12-1/2	451	SS160	303	STFX.004.065	188
SCG327A610.24/DC	274	SO 22421-12-1/4	451	SS200	303	STFX.004.080	188
SCG327B001.230/50	274	SO 22421-12-3/8	451	SS32	303	STFX.004.100	188
SCG327B001.24/DC	274	SO 22421-4-1/4	451	SS40	303	STFX.004.125	188
SCG327B002.230/50	274	SO 22421-4-1/8	451	SS50	303	STFX.004.150	188
SCG327B002.24/DC	274	SO 22421-6-1/4	451	SS63	303	STFX.004.200	188
SCG353-052.230/50	286	SO 22421-6-1/8	451	SS80	303	STFX.007.065	190
SCG353-052.24/DC	286	SO 22421-8-1/4	451	STAX.001.001	190	STFX.007.080	190
SCG353-053.230/50	286	SO 22421-8-1/8	451	STAX.001.001	191	STTX.001.002	186
SCG353-053.24/DC	286	SO 22621-10	451	STAX.001.001	192	STTX.001.003	186
SCG353A043.230/50	286	SO 22621-12	451	STAX.001.001	193	STTX.001.004	186
SCG353A043.24/DC	286	SO 22621-4	451	STAX.001.002	190	STTX.001.012	186
SCG353A044.230/50	286	SO 22621-6	451	STAX.001.002	193	STTX.001.014	186
SCG353A044.24/DC	286	SO 22621-8	451	STAX.001.003	192	STTX.001.022	186
SCG353A047.230/50	286	SO 23021-10	451	STAX.001.003	193	STTX.001.034	186
SCG353A047.24/DC	286	SO 23021-12	451	STAX.001.004	192	STTX.001.038	186
SCG353A050.230/50	286	SO 23021-4	451	STAX.001.004	193	STTX.001.044	186

STTX.001.054.....	186	T298B14DDTA0000.....	133	TAX.002.04.....	431	TAX.028.025.....	508	TPA.M1.025.BW.080060.....	429
STTX.001.064.....	186	T298B14DDVA0000.....	133	TAX.002.05.....	431	TAX.028.032.....	508	TPA.M1.050.BW.040027.....	429
STTX.002.002.....	186	T298B15DDDEA0000.....	133	TAX.002.06.....	431	TAX.028.040.....	508	TPA.M1.050.BW.060040.....	429
STTX.002.003.....	186	T298B15DDTA0000.....	133	TAX.002.08.....	431	TAX.028.050.....	508	TPA.M1.050.BW.080060.....	429
STTX.002.004.....	186	T298B15DDVA0000.....	133	TAX.002.10.....	431	TAX.029.016.....	508	TPA.M1.100.BW.040027.....	429
STTX.002.012.....	186	T298B16KDDEA0000.....	133	TAX.002.12.....	431	TAX.029.020.....	508	TPA.M1.100.BW.060040.....	429
STTX.002.022.....	186	T298B16KDVA0000.....	133	TAX.002.16.....	431	TAX.029.025.....	508	TPA.M1.100.BW.080060.....	429
STTX.002.034.....	186	T298B16KDDTA0000.....	133	TAX.002.22.....	431	TAX.029.032.....	508	TPA.M2.050.BB.040020.....	429
STTX.002.038.....	186	T298B16KDEA0000.....	133	TAX.002.28.....	431	TAX.029.040.....	508	TPA.M2.050.BB.060040.....	429
STTX.002.044.....	186	T298B17KDVA0000.....	133	TAX.002.34.....	431	TAX.029.050.....	508	TPA.M2.050.BB.080060.....	429
STTX.002.054.....	186	T298B17KDDTA0000.....	133	TAX.003.04.....	431	TCO.025.OR.018016.....	566	TPA.M2.050.BB.100080.....	429
STTX.002.064.....	186	T298B18MDEA0000.....	133	TAX.003.05.....	431	TCO.025.OR.022020.....	566	TPE.1.025.BK.040020.....	428
STTX.004.002.....	187	T298B18MDTA0000.....	133	TAX.003.06.....	431	TCO.050.OR.004002.....	566	TPE.1.025.BK.060040.....	428
STTX.004.012.....	187	T298B18MDVA0000.....	133	TAX.003.08.....	431	TCO.050.OR.006004.....	566	TPE.1.025.BK.080060.....	428
STTX.004.014.....	187	T398B237DEA0000.....	133	TAX.003.10.....	431	TCO.050.OR.008006.....	566	TPE.1.025.BK.100080.....	428
STTX.004.034.....	187	T398B237DVA0000.....	133	TAX.004.04.....	431	TCO.050.OR.010008.....	566	TPE.1.025.BK.120100.....	428
STTX.004.038.....	187	T398B237DVA0000.....	133	TAX.004.05.....	431	TCO.050.OR.012006.....	566	TPE.1.025.BL.040020.....	428
STTX.004.044.....	187	T398B24DDEA0000.....	133	TAX.004.06.....	431	TCO.050.OR.015013.....	566	TPE.1.025.BL.060040.....	428
STTX.004.054.....	187	T398B24DDTA0000.....	133	TAX.004.08.....	431	THER.01.077.00.120.....	542	TPE.1.025.BL.080060.....	428
STTX.004.064.....	187	T398B24DDVA0000.....	133	TAX.004.10.....	431	THER.01.077.00.160.....	542	TPE.1.025.BL.100080.....	428
STTX.005.002.....	189	T398B25DDEA0000.....	133	TAX.005.16.....	431	THER.01.077.00.200.....	542	TPE.1.025.BL.120100.....	428
STTX.005.012.....	189	T398B25DDTA0000.....	133	TAX.005.28.....	431	THER.01.077.30.050.....	542	TPE.1.025.NA.040020.....	428
STTX.005.034.....	189	T398B25DDVA0000.....	133	TAX.005.34.....	431	THER.01.100.00.120.....	542	TPE.1.025.NA.060040.....	428
STTX.005.044.....	189	T398B26KDEA0000.....	133	TAX.006.13.....	431	THER.01.100.00.160.....	542	TPE.1.025.NA.080060.....	428
STTX.005.054.....	189	T398B26KDVA0000.....	133	TAX.006.16.....	431	THER.01.100.00.200.....	542	TPE.1.025.NA.100080.....	428
STTX.005.064.....	189	T398B26KDDTA0000.....	133	TAX.006.19.....	431	THER.01.100.30.050.....	542	TPE.1.025.NA.120100.....	428
STTX.006.002.....	189	T398B27KDEA0000.....	133	TAX.006.XX.2516.....	507	THER.02.077.00.120.....	542	TPE.1.100.BK.040020.....	428
STTX.006.012.....	189	T398B27KDVA0000.....	133	TAX.006.XX.2520.....	507	THER.02.077.00.160.....	542	TPE.1.100.BK.060040.....	428
STTX.006.034.....	189	T398B27KDDTA0000.....	133	TAX.006.XX.3216.....	507	THER.02.077.00.200.....	542	TPE.1.100.BK.080060.....	428
STTX.006.044.....	189	T398B28MDEA0000.....	133	TAX.006.XX.3220.....	507	THER.02.077.30.050.....	542	TPE.1.100.BK.100080.....	428
STTX.006.054.....	189	T398B28MDTA0000.....	133	TAX.006.XX.4016.....	507	THER.02.100.00.120.....	542	TPE.1.100.BK.120100.....	428
STTX.006.064.....	189	T398B28MDVA0000.....	133	TAX.006.XX.4020.....	507	THER.02.100.00.160.....	542	TPE.1.100.BL.040020.....	428
STTX.007.002.....	190	T64T-2GB-PIN.....	391	TAX.006.XX.4025.....	507	THER.02.100.00.200.....	542	TPE.1.100.BL.060040.....	428
STTX.007.034.....	190	T64T-3GB-PIN.....	391	TAX.006.XX.5016.....	507	THER.02.100.30.050.....	542	TPE.1.100.BL.080060.....	428
STTX.007.044.....	190	T64T-4GB-PIN.....	391	TAX.006.XX.5020.....	507	THER.03.063.00.060.....	542	TPE.1.100.BL.100080.....	428
STTX.007.054.....	190	T64T-6GB-PIN.....	391	TAX.006.XX.5025.....	507	THER.03.063.00.120.....	542	TPE.1.100.BL.120100.....	428
STTX.008.003.....	186	T651ATS04959002.....	382	TAX.007.16.....	566	THER.03.063.20.060.....	542	TPE.1.100.NA.040020.....	428
STTX.008.004.....	186	T651ATS19193001.....	381	TAX.007.19.....	566	THER.03.063.40.040.....	542	TPE.1.100.NA.060040.....	428
STTX.008.008.....	186	T651ATS19193001.....	382	TAX.007.25.....	566	THER.03.063.40.040.....	542	TPE.1.100.NA.080060.....	428
STTX.008.012.....	186	T652A5L040A0000.....	381	TAX.007.XX.2512.....	507	THEX.01.077.30.200.....	542	TPE.1.100.NA.100080.....	428
STTX.008.022.....	186	T652A6L040A0000.....	381	TAX.007.XX.3212.....	507	THEX.01.100.30.200.....	542	TPE.1.100.NA.120100.....	428
STTX.008.034.....	186	T652AT502468002.....	381	TAX.007.XX.4012.....	507	TPA.1.025.BK.040020.....	423	TPT.1.025.NA.040020.....	426
STTX.008.038.....	186	T652AT502468002.....	382	TAX.007.XX.4034.....	507	TPA.1.025.BK.050030.....	423	TPT.1.025.NA.050030.....	426
STTX.008.044.....	186	T652AT519193003.....	381	TAX.007.XX.5012.....	507	TPA.1.025.BK.060040.....	423	TPT.1.025.NA.060040.....	426
STTX.008.054.....	186	T652AT519193003.....	382	TAX.007.XX.5034.....	507	TPA.1.025.BK.080060.....	423	TPT.1.025.NA.080060.....	426
STTX.008.064.....	186	T653A5L060A0000.....	381	TAX.008.BK.25100.....	566	TPA.1.025.BK.100080.....	423	TPT.1.025.NA.100080.....	426
STTX.009.034.....	191	T653A6L060A0000.....	381	TAX.008.BK.25120.....	566	TPA.1.025.BK.120100.....	423	TPT.1.025.NA.120100.....	426
STTX.010.034.....	192	T653AT507292002.....	381	TAX.008.BK.25200.....	566	TPA.1.025.BK.140110.....	423	TPT.1.025.NA.140120.....	426
		T653AT507292002.....	382	TAX.008.BK.36150.....	566	TPA.1.025.BK.150120.....	423	TPT.1.025.NA.160140.....	426
		T653AT519194001.....	382	TAX.008.BK.36200.....	566	TPA.1.025.BK.160120.....	423	TPT.1.050.NA.040020.....	426
		T653AT519194003.....	382	TAX.008.BK.48200.....	566	TPA.1.025.BK.160120.....	423	TPT.1.050.NA.050030.....	426
		T68H-6GB-B2N.....	391	TAX.008.BK.48300.....	566	TPA.1.025.BL.080060.....	423	TPT.1.050.NA.060040.....	426
		T68H-8GB-B2N.....	391	TAX.008.WH.25100.....	566	TPA.1.025.BL.100080.....	423	TPT.1.050.NA.080060.....	426
		T68H-AGB-B2N.....	391	TAX.008.WH.25120.....	566	TPA.1.025.BL.120100.....	423	TPT.1.050.NA.100080.....	426
		T68H-BGB-B2N.....	391	TAX.008.WH.25200.....	566	TPA.1.025.BL.140110.....	423	TPT.1.050.NA.120100.....	426
		TAAX.01.01.H.....	511	TAX.008.WH.36150.....	566	TPA.1.025.BL.150120.....	423	TPT.1.050.NA.140120.....	426
		TAAX.01.01.V.....	509	TAX.008.WH.36200.....	566	TPA.1.025.BL.160120.....	423	TPT.1.050.NA.160140.....	426
		TAAX.01.01.V.....	510	TAX.008.WH.48200.....	566	TPA.1.025.NA.040020.....	423	TPT.1.100.NA.040020.....	426
		TAAX.01.02.H.....	511	TAX.008.WH.48300.....	566	TPA.1.025.NA.050030.....	423	TPT.1.100.NA.050030.....	426
		TAAX.01.02.V.....	509	TAX.009.28.....	425	TPA.1.025.NA.060040.....	423	TPT.1.100.NA.060040.....	426
		TAAX.01.02.V.....	510	TAX.009.28.....	426	TPA.1.025.NA.080060.....	423	TPT.1.100.NA.080060.....	426
		TAAX.01.03.H.....	511	TAX.009.28.....	427	TPA.1.025.NA.100080.....	423	TPT.1.100.NA.100080.....	426
		TAAX.01.03.V.....	509	TAX.009.28.....	428	TPA.1.025.NA.120100.....	423	TPT.1.100.NA.120100.....	426
		TAAX.01.03.V.....	510	TAX.009.28.....	431	TPA.1.025.NA.140110.....	423	TPT.1.100.NA.140120.....	426
		TAAX.01.04.V.....	509	TAX.010.28.....	425	TPA.1.025.NA.150120.....	423	TPT.1.100.NA.160140.....	426
		TAAX.01.04.V.....	510	TAX.010.28.....	426	TPA.1.025.NA.160120.....	423	TPT.2.025.BK.040020.....	427
		TAAX.01.05.V.....	509	TAX.010.28.....	427	TPA.1.100.BK.040020.....	423	TPT.2.025.BK.060040.....	427
		TAAX.01.05.V.....	510	TAX.010.28.....	428	TPA.1.100.BK.050030.....	423	TPT.2.025.BK.080060.....	427
		TAL.006.BL.2017.....	505	TAX.010.28.....	431	TPA.1.100.BK.060040.....	423	TPT.2.025.BK.100080.....	427
		TAL.006.BL.2522.....	505	TAX.010.XX.2532.....	508	TPA.1.100.BK.080060.....	423	TPT.2.025.BK.120100.....	427
		TAL.006.BL.3229.....	505	TAX.010.XX.4050.....	508	TPA.1.100.BK.100080.....	423	TPT.2.025.BK.140120.....	427
		TAL.006.BL.4036.....	505	TAX.011.XX.1620.....	508	TPA.1.100.BK.120100.....	423	TPT.2.050.BK.040020.....	427
		TAL.006.BL.5046.....	505	TAX.011.XX.2532.....	508	TPA.1.100.BK.140110.....	423	TPT.2.050.BK.060040.....	427
		TAL.006.GR.2017.....	505	TAX.011.XX.4050.....	508	TPA.1.100.BK.150120.....	423	TPT.2.050.BK.080060.....	427
		TAL.006.GR.2522.....	505	TAX.012.XX.1540.....	508	TPA.1.100.BK.160120.....	423	TPT.2.050.BK.100080.....	427
		TAL.006.GR.4036.....	505	TAX.012.XX.1563.....	508	TPA.1.100.BL.040020.....	423	TPT.2.050.BK.120100.....	427
		TAL.006.GY.2017.....	505	TAX.013.XX.16M8.....	508	TPA.1.100.BL.050030.....	423	TPT.2.050.BK.140120.....	427
		TAL.006.GY.2522.....	505	TAX.013.XX.20M8.....	508	TPA.1.100.BL.060040.....	423	TPT.2.100.BK.060020.....	427
		TAL.006.GY.3229.....	505	TAX.013.XX.25M8.....	508	TPA.1.100.BL.080060.....	423	TPT.2.100.BK.080040.....	427
		TAL.006.GY.4036.....	505	TAX.013.XX.32M8.....	508	TPA.1.100.BL.100080.....	423	TPT.2.100.BK.080060.....	427
		TAL.006.GY.5046.....	505	TAX.013.XX.40M8.....	508	TPA.1.100.BL.120100.....	423	TPT.2.100.BK.100080.....	427
		TANK.0100.H.....	511	TAX.013.XX.50M8.....	508	TPA.1.100.BL.140110.....	423	TPT.2.100.BK.120100.....	427
		TANK.0100.V.....	509	TAX.014.BL.2017.....	505	TPA.1.100.BL.150120.....	423	TPT.2.100.BK.140120.....	427
		TANK.0200.H.....	511	TAX.014.BL.2522.....	505	TPA.1.100.BL.160120.....	423	TPT.2.025.BK.040020.....	425
		TANK.0200.V.....	509	TAX.015.30.4063.....	508	TPA.1.100.NA.040020.....	423	TPU.1.025.BK.050030.....	425
		TANK.0270.H.....	511	TAX.015.35.2032.....	508	TPA.1.100.NA.050030.....	423	TPU.1.025.BK.060040.....	425
		TANK.0270.V.....	509	TAX.016.25.1000.....	508	TPA.1.100.NA.060040.....	423	TPU.1.025.BK.080060.....	425
		TANK.0500.H.....	511	TAX.016.32.1250.....	508	TPA.1.100.NA.080060.....	423	TPU.1.025.BK.100070.....	425
		TANK.0500.V.....	509	TAX.016.40.1500.....	508	TPA.1.100.NA.100080.....	423	TPU.1.025.BK.120090.....	425
		TANK.0710.V.....	509	TAX.016.50.2000.....	508	TPA.1.100.NA.120100.....	423	TPU.1.025.BL.040020.....	425
		TANK.0900.H.....	511	TAX.017.XX.1650.....	508	TPA.1.100.NA.140110.....	423	TPU.1.025.BL.050030.....	425
		TANK.0900.V.....	509	TAX.018.XX.1650.....	508	TPA.1.100.NA.150120.....	423	TPU.1.025.BL.060040.....	425
		TANK.1000.V.....	509	TAX.019.016.....	508	TPA.1.100.NA.160120.....	423	TPU.1.025.BL.080060.....	425
		TANK.1500.V.....	509	TAX.019.020.....	508	TPA.2.025.BK.010080.....	424	TPU.1.025.BL.100070.....	425
		TANK.2000.V.....	509	TAX.019.025.....	508	TPA.2.025.BK.012010.....	424	TPU.1.025.BL.	

INDEX

TPU.1.100.BL.050030	425
TPU.1.100.BL.060040	425
TPU.1.100.BL.080060	425
TPU.1.100.BL.100070	425
TPU.1.100.BL.120090	425
TPU.1.100.NA.040020	425
TPU.1.100.NA.050030	425
TPU.1.100.NA.060040	425
TPU.1.100.NA.080060	425
TPU.1.100.NA.100070	425
TPU.1.100.NA.120090	425
TWV 11B90 080	543
TWV 11B90 130	543
TWV 11B90 180	543
TWV 11B90 230	543

U

UG1120283.230/50	287
UG1120285.24/DC	287

V

VAAX.001.015	227
VAAX.001.020	227
VAAX.001.025	227
VAAX.001.032	227
VAAX.001.040	227
VAAX.001.050	227
VAAX.001.065	227
VAAX.001.080	227
VAAX.001.100	227
VAAX.001.125	227
VAAX.001.150	227
VAAX.001.200	227
VAAX.001.250	227
VAAX.001.300	227
VAAX.001.350	227
VAAX.001.400	227
VAAX.001.450	227
VAAX.001.500	227
VAAX.001.600	227
VAAX.002.015	227
VAAX.002.020	227
VAAX.002.025	227
VAAX.002.032	227
VAAX.002.040	227
VAAX.002.050	227
VAAX.002.065	227
VAAX.002.080	227
VAAX.002.100	227
VAAX.002.125	227
VAAX.002.150	227
VAAX.002.200	227
VAAX.002.250	227
VAAX.002.300	227
VIB.04.01.1818	293
VIB.04.02.1818	293
VIB.04.03.1414	293
VIB.04.04.1818	293
VIB.06.01.1414	294
VIB.06.02.3838	294
VIB.06.03.1212	294

W

W0210010100	402
W021001100	402
W0210012100	402
W0210013100	402
W0215000101	352
W0215000101	402
W0215000111	352
W0215000111	402
W0215000121	352
W0215000121	402
W0215000131	352
W0215000131	402
W0215000151	352
W0215000151	402
W0215002000	352
W0351000011	358
W0351000014	358
W0970050001	421
W0970050002	421
W0970050003	421
W0970050004	421
W0970513010	411
W0970513011	411
W0970513019	411
W0970530084	363
W298B037AEA0000	129
W298B037ATA0000	129
W298B037AVA0000	129

W298B04DAEA0000	129
W298B04DATA0000	129
W298B04DAVA0000	129
W298B05DAEA0000	129
W298B05DATA0000	129
W298B05DAVA0000	129
W298B06KAEA0000	129
W298B06KATA0000	129
W298B06KAVA0000	129
W298B07KAEA0000	129
W298B07KATA0000	129
W298B07KAVA0000	129
W298B08MAEA0000	129
W298B08MATA0000	129
W298B08MAVA0000	129
W298B137AEA0000	129
W298B137ATA0000	129
W298B137AVA0000	129
W298B14DAEA0000	129
W298B14DATA0000	129
W298B14DAVA0000	129
W298B15DAEA0000	129
W298B15DATA0000	129
W298B15DAVA0000	129
W298B16KAEA0000	129
W298B16KATA0000	129
W298B16KAVA0000	129
W298B17KAEA0000	129
W298B17KATA0000	129
W298B17KAVA0000	129
W298B18MAEA0000	129
W298B18MATA0000	129
W298B18MAVA0000	129
W3120000001	359
W3120000011	359
W3120000021	359
W31200000301	359
W31200000311	359
W31200000321	359
W31200000331	359
W31200000401	359
W31200000411	359
W35010000100	358
W35010001100	358
W36030000001	421
W36040000001	420
W36040000002	420
W36040000003	420
W36040000004	420
W36040000005	420
W36040000006	420
W36050000001	358
W398B237AEA0000	129
W398B237ATA0000	129
W398B237AVA0000	129
W398B24DAEA0000	129
W398B24DATA0000	129
W398B24DAVA0000	129
W398B25DAEA0000	129
W398B25DATA0000	129
W398B25DAVA0000	129
W398B26DAEA0000	129
W398B26DATA0000	129
W398B26DAVA0000	129
W398B27KAEA0000	129
W398B27KATA0000	129
W398B27KAVA0000	129
W398B28MAEA0000	129
W398B28MATA0000	129
W398B28MAVA0000	129
W6001011011	418
W6001021001	418
W6001021021	418
WFMF.01.040	552
WFMF.01.050	552
WFMF.01.065	552
WFMF.01.080	552
WFMF.01.100	552
WFMF.01.125	552
WFMF.01.150	552
WFMF.01.200	552
WFMF.01.250	552
WFMF.01.300	552
WFMF.02.040	552
WFMF.02.050	552
WFMF.02.065	552
WFMF.02.080	552
WFMF.02.100	552
WFMF.02.125	552
WFMF.02.150	552
WFMF.02.200	552
WFMF.02.250	552
WFMF.02.300	552
WFMT.01.002	552
WFMT.01.012	552
WFMT.01.034	552
WFMT.01.044	552
WFMT.01.054	552
WFMT.01.064	552
WFMT.02.002	552
WFMT.02.012	552
WFMT.02.034	552
WFMT.02.044	552
WFMT.02.054	552
WFMT.02.064	552

Y

Y64A-2GA-N1N	391
Y64A-2GA-N2N	391
Y64A-3GA-N1N	391
Y64A-3GA-N2N	391
Y64A-4GA-N1N	391
Y64A-4GA-N2N	391
Y64A-6GA-N1N	391
Y64A-6GA-N2N	391
Y68A-6GN-N1N	391
Y68A-6GN-N2N	391
Y68A-8GN-N1N	391
Y68A-8GN-N2N	391
Y68A-AGN-N1N	391
Y68A-AGN-N2N	391
Y68A-BGN-N1N	391
Y68A-BGN-N2N	391

Z

Z 125N	496
Z 183N	496
Z 20N	496
Z 250N	496
Z 35N	496
Z 375	496
Z 53N	496
Z 75N	496
Z402110005	510
Z402110011	453
Z402114004	453
Z405000141	425
Z405000141	426
Z405000141	427
Z405000141	428
Z405000141	431
Z408000006	452
Z408000007	452
Z408000008	452
Z408000009	452
Z408000010	452
Z408000012	452
Z408000013	452
Z408000014	452
Z408000015	452
Z408000016	452
Z408000017	452
Z408000018	454
Z408000019	454
Z408000020	453
Z408000021	453
Z408000022	453
Z408000023	453
Z408000025	452
Z408000028	452
Z408000030	452
Z408000033	452
Z409800116	398
Z409800116	399
Z409800116	401
Z409800116	404
Z409800216	398
Z409800216	404
Z40W0960090001	541
Z40W0960090002	541
Z40W0960090003	541
Z40W0960090004	541
Z40W0960090011	541
Z40W09600900900	541
ZB10K V230/50 Hz	248
ZB10K V230/50-60HZ	279
ZB10K V24/50-60HZ	279
ZC10A V24 DC	279
ZC10A V24 DC	248
ZS 3200	306

A series of horizontal dotted lines for taking notes, spanning the width of the page.



FLUID

A series of horizontal dotted lines for taking notes, spanning the width of the page.



FLUID

